



PRODUCT CATALOG

A LEGACY IN LUMBER

Injection Molding



Cast Urethane



CNC Machining



Compression Molding



Custom Fabrication



Rubber Capabilities



PLASTICS INNOVATORS




With the mountain ranges and forests surrounding Missoula to inspire us, our company began producing plastic wear strips for lumber and pulp mills in the area.

ROOTED IN LUMBER

Launched in a garage by Rod Reid in 1976, we have grown to be a North American leader in plastics design, engineering, and manufacturing – doing whatever it takes to achieve more with plastic

Diversified Plastics, Inc. is now led by Brad Reid, a mechanical engineer, and a team of more than 75 experienced, knowledgeable, and creative plastics professionals.



**Explore our range
of parts and
components on the
following pages.**

Contact us to
discuss how we
can help solve your
unique challenges
with in-house
design engineering
and prototyping.

A VISIT TO **YOUR SITE**



Let's arrange a meeting
at your facility for a full
evaluation, at no cost to you.

With an assessment of your
processes, materials, designs,
and parts, we can offer
plastics solutions to help.

800.321.0084

email: sales@dpiplastics.com

CLEAR CUT ADVANTAGES

Why engineered plastics components are a growing favorite in forestry

The benefits of using plastic parts and components in forest and lumber industry equipment are endless.

Specify DPI plastic parts and components and see advantages like greater durability, corrosion resistance, reduced friction, wear-resistance, lower noise levels, and longer service life.

We have the plastic solution for all your essential equipment.

Debarkers

Trimmers

Graders

Dry Kilns

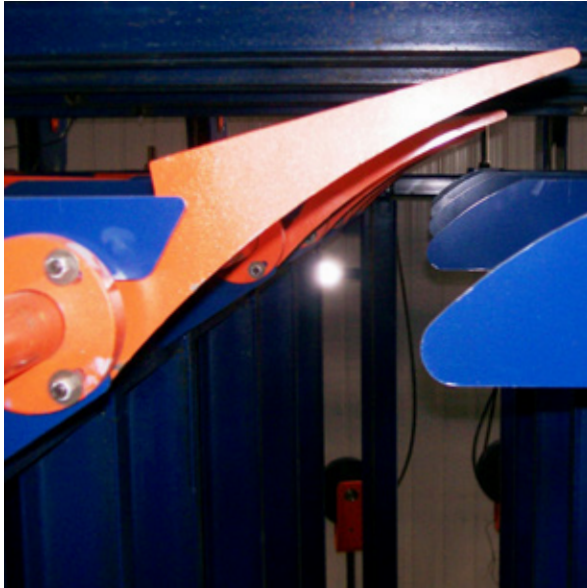
Planers

Stackers

Sawmill Infeed

Bin Sorters





CONCEPT TO CREATION

From first ideas to finished products, we are your most comprehensive plastic parts manufacturer.

- Single source for plastic parts engineering, tooling, and production
- Multiple manufacturing processes to meet any need
- Capabilities for custom orders, short runs, or high quantities



ON-SITE **DESIGN** **ENGINEERING**

Using creativity, collaboration,
and a progressive mindset, we solve
challenges no one else can.

With an in-house engineering team representing a range of engineering disciplines and having extensive experience with plastics, you can rely on us to develop innovative solutions for any situation. And our in-house tooling capabilities streamline prototyping and ensure quality in production.

We can also incorporate custom resins, additive packages, and color matches to ensure you have the right plastic for the job.

Our engineers will show you
what's possible with plastic.

Whether your goal is to update designs, simplify components, improve wear life, reduce costs, or boost productivity, we can help.

LET'S CLARIFY THE
ADVANTAGES OF

INJECTION MOLDED UHMW-PE

Our proprietary process makes us the only manufacturer with the ability to injection mold highly versatile, durable, and lightweight UHMW-PE.

The ability to injection mold UHMW-PE is our specialty – and a cost savings advantage you'll find only at DPI.

Our injection molding capabilities allow for custom and precision parts work and provide benefits such as faster cycle times, high production runs, reduced material waste, and significant savings of costs and time compared to machining. And our in-house tooling and mold fabrication streamlines development and ensures quality in production.

Your low-volume, high-volume, and high-cost machined UHMW-PE replacement parts are great candidates for converting to injection molding with DPI.



THE RANGE OF PARTS WE CAN
INJECTION MOLD
WILL INSPIRE
NEW IDEAS

Why machine it when
you can mold it?

The range of types,
designs, and sizes of
plastic components
that we can injection
mold is nearly limitless.

Just some
of the plastics
materials
we can use
for injection
molding

UHMW-PE

Urethane

PEEK

Polypropylene

Nylon

Ultem

HDPE

Glass, Carbon,
and Oil Filled



**Get the benefits of injection
molded parts and components:**

- Savings of Costs, Labor, and Time
- Precise Production and Quality Control
- Custom Additives and Colors
- Multi-Component Mold Capabilities
- Faster Cycle Times than Machining
- Guaranteed Molds Protect Your Investment
- Private Labeling

DPI INNOVATION AT WORK: **MULTIFAB HYBRID COMPONENTS**

Blending the best in materials and manufacturing processes to deliver optimum part performance.

To produce truly innovative solutions, our MultiFab Hybrid Components approach allows us to bring together the right polymers with the capabilities of our fabrication, machining, injection molding, and polyurethane casting departments.

The result is optimum part performance and durability at a competitive price – for any given application.



DESIGN ENGINEERING



MULTIFAB HYBRID
COMPONENTS



INJECTION MOLDING



CUSTOM FABRICATION



MACHINING



URETHANE CASTING



THERMOFORMING



MULTIFAB

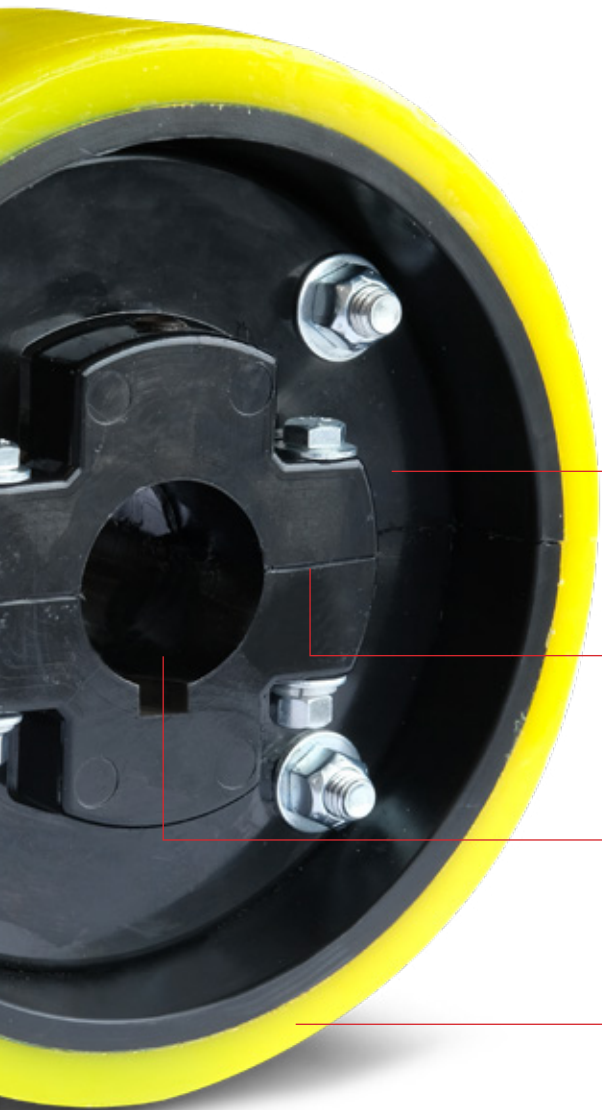
HYBRID COMPONENTS

MULTIFAB BRINGS
IT ALL TOGETHER
FOR A
SINGLE
**SUPERIOR
PART**

We developed MultiFab to address a simple truth: different components of a part often require different qualities for maximum performance.

Get the advantages of MultiFab

- **Superior Performance** – The best materials and production processes optimize the performance of each component.
- **Durability and Strength** – Integrated design to deliver the best wear life and longevity.
- **Lower Weight** – Lighter than cast iron and other materials while still meeting or exceeding specifications.
- **Better Pricing** – MultiFab approach reduces costs of materials, machining, and waste.
- **Customization** – Materials and processes optimized for your application.



A CLOSER LOOK AT OUR MULTIFAB DESIGN-BUILD

Explore the makeup of a component created with our MultiFab approach.

Intermediate plate and hub is injection molded from high-strength 70D polyurethane for increased durability and load-bearing strength.

Split and assembled for ease of installation to a wide variety of shaft sizes. Utilizing stainless steel hardware for increased corrosion resistance.

Center bore and keyway are machined after complete assembly to hold tight tolerances for optimal fit and performance on the shaft.

High wear outer tread is casted with abrasion resistant 60A polyurethane for non-marking grip to provide exceptional conveying properties.

MultiFab Hybrid Components are the result of our custom process that combines the best of proven polymer materials, with up to three fabrication methods, ensuring a superior component design that meets your specifications and addresses the challenges of your application.

Independent lab testing shows that our MultiFab Hybrid Components are stronger and wear better than parts made of just a single material.

Contact us to learn how we can develop your MultiFab solutions all under one roof.

800.321.0084

email: sales@dpiplastics.com

MONTANA
PRODUCES
ABOUT
340 MMBF
OF LUMBER
ANNUALLY

DPI offers more than **350 SKUs**

of unique parts, styles, and sizes to support
the production needs of the forest, timber,
and paper industry.



ABOVE
A CUT

Our experience in the
lumber industry has
made us a leading
provider of custom
fabricated parts and
components for the
production of engineered
wood products.

ENGINEERED PLASTIC COMPONENTS



MILL CHAIN SPROCKET

Mill chain sprockets provide impact and corrosion resistance while also protecting your chain and reducing operating noise.

For use with 78/81x chain.

FEATURES

- Available in split or solid designs
- Various tooth counts and bore sizes available
- Available with stainless steel hub for maximum strength

MATERIALS

- UHMW-PE
- Nylon
- Acetal

Part ID	Teeth	Chain Type	Style	LTB
MC7804C	4	78 /81X/ 188	Solid	2"
MC7805C	5	78 /81X/ 188	Solid	2-3/16"
MC7806C	6	78 /81X/ 188	Solid	2-1/4"
MC7808C	7	78 /81X/ 188	Solid	3"
MC7808C	8	78 /81X/ 188	Solid	3"
MC7809C	9	78 /81X/ 188	Solid	3"
MC7810C	10	78 /81X/ 188	Solid	3"
MC7812CS	12	78 /81X/ 188	Split or Solid	3"
MC7813CS	13	78 /81X/ 188	Split or Solid	3"
MC7814CS	14	78 /81X/ 188	Split or Solid	3"
MC5505C	5	55	Solid	1-1/2"
MC13108C	8	131	Solid	2-3/4"



CARRY OVER WHEELS

“COW” are commonly used in the wood products industry for board carry-over applications between chain runs. They are manufactured from high strength urethane materials which give them impact resistance as well as lightweight construction. The soft urethane coating adds to their versatility in uses such as traction wheels, hold down wheels, and feed rolls.

Part ID	Diameter	Face Width
COW1000	10"	3"
COW1100	11"	3"
COW1200	12"	3"
COW1300	13"	3"
COW1400	14"	3"
COW1500	15"	3"
COW1600	16"	3"

FEATURES

- Split for easy installation
- Key and set screw available
- High grip

MATERIALS

- 60A Tread
- 75D Hub
- Steel Hardware



PUSHER LUGS

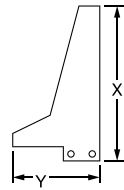
Molded and machined pusher lugs are used to push studs across the conveying line during the sorting process. Parts are available in a variety of sizes, colors, and materials.

FEATURES

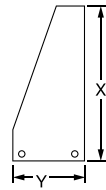
- Non-marking
- Over molded steel insert
- Durable, all color options available

MATERIALS

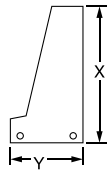
- Polyurethane
- UHMW-PE



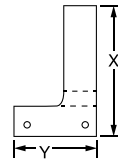
Style (A)



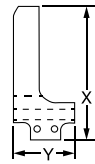
Style (B)



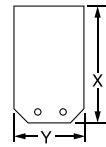
Style (C)



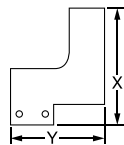
Style (D)



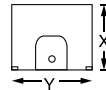
Style (E)



Style (F)



Style (G)



Style (H)

Part ID	Style	Base Thickness	Max Height	Hole C-C	Material
LUG P 10.5	A	1"	10-1/2"	1-1/2"	80A - 75D Urethane
LUG P1 10.5	A	1-3/8"	10-1/2"	1-1/2"	80A - 75D Urethane
LUG P2	B	1"	10-1/2"	3-5/8"	80A - 75D Urethane
LUG P4	C	1"	9-1/4"	3-5/8"	80A - 75D Urethane
LUG P5	D	1-3/8"	9-1/4"	4"	80A - 75D Urethane
LUG P6	E	1"	7-3/4"	1"	80A - 75D Urethane
LUG P9	F	1"	6-3/4"	1-1/2"	80A - 75D Urethane
LUG P9	G	1-1/8"	7"	1-1/2"	80A - 75D Urethane
LUG OPT 70D-OR	H	5/8"	2-9/16"	--	70D-75D Urethane



ROLLER LUGS

Molded UHMW Roller lugs are used to push studs across the conveying line. As the timber slides to the side, these lugs roll with it to keep from marking.

FEATURES

- High wear
- Available with steel assembly
- Lightweight
- Custom dimension available

MATERIALS

- UHMW-PE



Part ID	OD	ID	Height	Top Counterbore Diameter	Top Counterbore Depth	Bottom Counterbore Diameter	Bottom Counterbore Depth
LUG 1A	2-3/4"	1"	2-1/4"	2"	13/16"	2"	9/16"
LUG 1B	2-3/4"	1"	2-1/4"	2"	15/16"	2"	7/16"
LUG 4	3-1/2"	1-1/2"	2-1/4"	2-3/8"	1/2"	--	--
LUG 5A	2-3/4"	1"	3-1/4"	2"	13/16"	2"	9/16"
LUG 5B	2-3/4"	1"	3-1/4"	2"	15/16"	2"	7/16"
LUG 6	2-3/4"	1-1/2"	1-3/4"	2-5/16"	3/16"	--	--
LUG 7	3-7/8"	1-1/2"	2-1/4"	2-7/16"	9/16"	--	--
LUG 9	2-3/4"	1"	2-3/8"	2-3/8"	1/2"	2-3/8"	1/2"



J-HOOKS

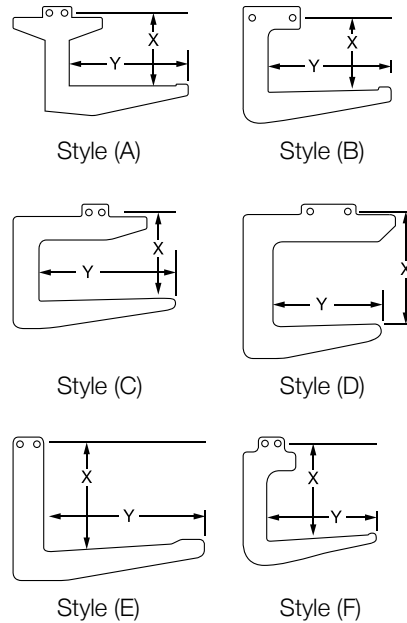
J-Hooks are molded in over 36 different sizes and styles to fit a variety of chains and attachments. Custom sizes can be accommodated upon request.

FEATURES

- Overmolded steel insert option
- Lightweight
- Highwear

MATERIALS

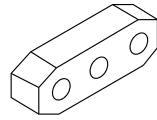
- UHMW-PE
- Copolymer PP
- Polyurethane



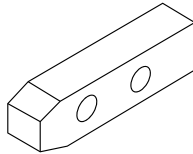
Part ID	Style	X-Dim	Y-Dim	Thickness	Hole C-C
J1	A	9-1/2"	11-3/4"	1"	1-1/2"
J2	A	7-1/2"	12"	1"	1-1/2"
J6	B	7-5/8"	12-1/4"	1"	4"
J7	C	8-5/8"	14"	1"	1-1/2"
J8	C	8-3/4"	15-1/2"	1"	1-1/2"
J10	C	8"	10-3/4"	1"	1-1/2"
J13	C	9-1/4"	9-1/4"	1"	1-1/2"
J14	C	7-1/2"	9-1/4"	1"	1-1/2"
J16	C	7-7/8"	12-3/8"	1"	1-1/2"
J17	E	7-1/4"	9-1/8"	1"	1-1/2"
J19	F	6-1/2"	7-1/4"	1"	1"
J20	D	12-1/4"	12-1/2"	1"	3-5/8"
J21	E	7-1/2"	12"	1"	1-1/2"
J22	C	10-3/8"	10-1/2"	1"	1-1/2"
J24	C	9-1/8"	17-3/4"	1"	1-1/2"
J25	B	8-1/8"	12-3/4"	1"	3"
J27	D	11-1/4"	13"	1"	4"
J29	D	8-3/8"	10-1/2"	1"	4"
J30	B	7-5/8"	12-1/2"	1"	4"
J31	B	9-1/4"	12-1/2"	1"	4"
J34	B	9-1/2"	12-3/8"	1"	4"
J35	D	7-5/8"	13"	1"	4"
J36	D	10-3/4"	11"	1"	4"

SLIDER BLOCKS

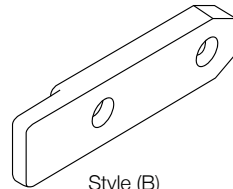
Used in conjunction with J bars and J hooks, pusher lugs are used to transport lumber and reduce friction.



Style (A)



Style (C)



Style (B)

FEATURES

- Custom size and styles available
- Highwear
- Non-corrosive

MATERIALS

- UHMW-PE
- Nylon



Part ID	Style	Length	Width	Thickness	Bolt C-C
SLB2	B	6"	1-3/8"	1"	1-1/2"
SLB2M	B	6"	1-3/8"	3/4"	1-1/2"
SLB6	B	5-3/8"	1-3/8"	1"	3-5/8"
SLM9	B	4-3/4"	1-1/4"	1"	1-1/2"



DIVERTER ARMS

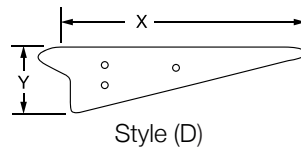
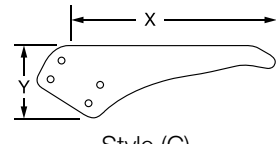
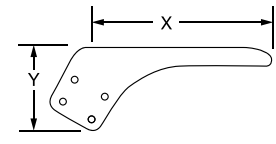
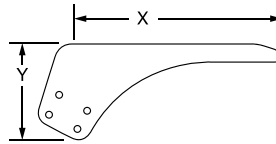
Diverter arms are molded from impact resistant, low friction UHMW-PE, and polyurethane. The lightweight construction allows the arm to tip up and down quickly with low inertia.

FEATURES

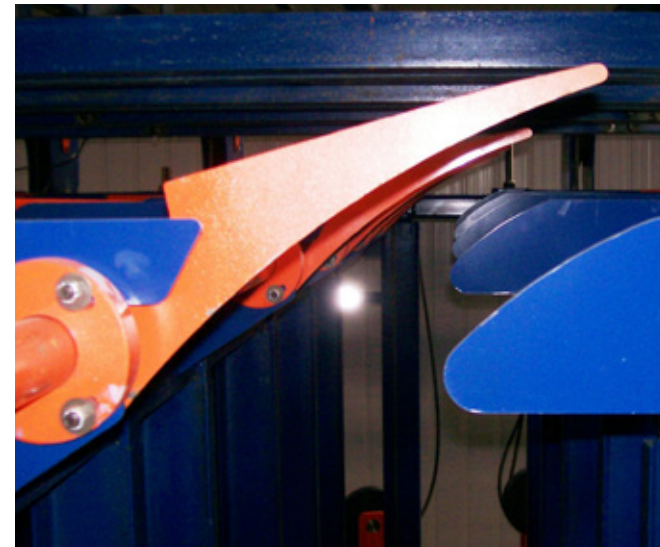
- High rigidity
- Bolt pattern options
- Lightweight

MATERIALS

- UHMW-PE
- Polyurethane



Part ID	Style	X-Dim	Y-Dim	Thickness
DIV 1	A	18-1/2"	9"	1"
DIV 2	A	17-1/2"	8"	1"
DIV 3	B	20-1/2"	8"	1"
DIV 4	B	14-1/2"	8"	1"
DIV 5	A	15-1/2"	9"	1"
DIV 6	A	21-1/2"	9"	1"
DIV 7	A	22"	9-1/2"	1"
DIV 8	C	18-1/2"	7"	1"
DIV 9	A	18-1/2"	9"	1"
DIV 12	A	20"	9-1/4"	1"
DIV 22	C	24"	6-3/4"	1"



KILN CART BUSHINGS

Our bushings are in kiln applications throughout the sawmill industry. We injection mold and machine from HT Nylon, a high-temperature, high-load resin that is self-lubricating – for long bushing life in a 250° F operating environment where normal lubricants would melt or oxidize. All bushings are bored with thermal expansion tolerance.

FEATURES

- High temperature durability
- Extremely high strength
- Standard and custom sizes available

MATERIALS

- Glass-Filled Nylon
- Phenolic
- HT Nylon

Part ID	OD	ID	Length
KL1	2-1/4"	1-1/8"	3-1/4"
KL2	2-1/4"	1-7/16"	3-1/4"
KL3	2-1/4"	1-1/2"	3-1/4"
KS1	2-1/4"	1-1/8"	3"
KS2	2-1/4"	1-7/16"	3"
KS3	2-1/4"	1-1/2"	3"
KML1	2-3/8"	1-1/8"	3-1/4"
KML2	2-3/8"	1-7/16"	3-1/4"
KML3	2-3/8"	1-1/2"	3-1/4"
KMS1	2-3/8"	1-1/8"	3"
KMS2	2-3/8"	1-7/16"	3"
KMS3	2-3/8"	1-1/2"	3"



SPLIT TIPPLE BEARINGS + PILLOW BLOCKS

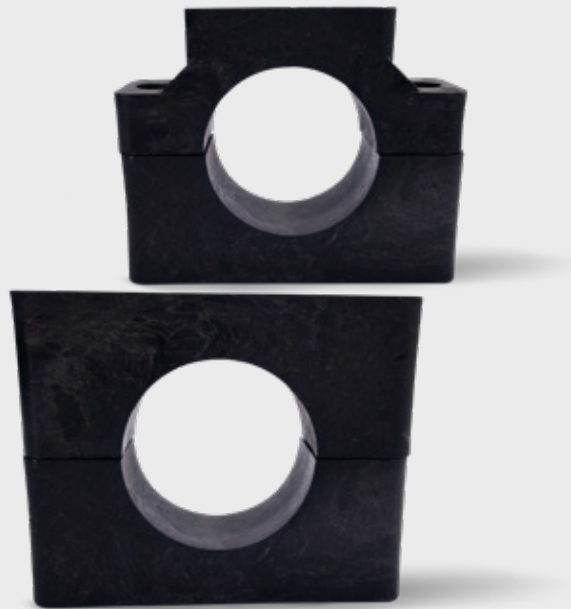
Molded UHMW split tipple bearings are a cost effective, maintenance free, and low friction bearing with split design for easy installation. They are used on the shafts for diverter arms and tipple arms during the sorting process. Split pillow block bearings will interchange with most standard units. These bearings excel in wet and corrosive environments where high performance and low maintenance is desired.

FEATURES

- Self lubricating
- High wear
- Non corrosive
- Variety of sizes

MATERIALS

- UHMW-PE
- Polyurethane
- Nylon
- Acetal



URETHANE WHEELS

These wheels or rolls are used anywhere in conveying where high grip and non-marking applications are employed.

FEATURES

- 50A-75D
- Bonds easily to steel hubs
- Can be made up to 36" diameter
- Can be recovered

MATERIALS

- Polyurethane



URETHANE ROLL RECOVER PROCESS

This is a process to save and reuse steel shafts that require a new urethane coating. These can be cast with any durometer and color to properly fit any equipment.



FEATURES

- Rolls up to 10' long
- Can be up to 36" diameter
- High grip and high wear
- Bonds extremely well to steel

MATERIALS

- Polyurethane



CHAIN TOPS

Weld-on chain tops are used widely in the lumber industry. They are great for applications where non-marking and back-up loads are a concern. The low friction surface is used in areas such as planed lumber conveyors, transfer conveyors, stackers/unstackers, etc. High grip chain tops are great for incline applications.

FEATURES

- Made with 12 gauge steel for easy welding
- Non-marking
- Low friction or high grip available
- All standard and custom sizes available

Part ID	Chain Type	Material
CT78UH	78	UHMW
CT78ST-70A	78	70A Urethane
CT78ST-90A	78	90A Urethane
CT81XUH	81X	UHMW
CT81XST-70A	81X	70A Urethane
CT81XST-90A	81X	90A Urethane

MATERIALS

- Monoprene
- Polyurethane
- UHMW-PE
- Nylon



CARRIAGE WHEELS

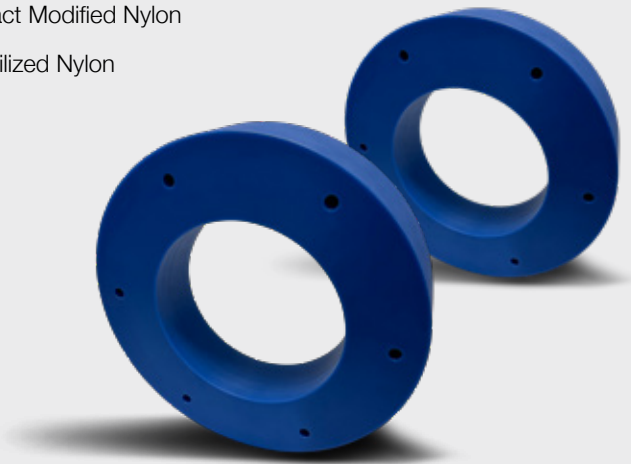
These parts carry lumber to the face of the saw. Historically, steel wheels were not able to absorb the frequent impact of carriage loading which would cause failure of the wheel due to stress cracking. Making these part from Nylon allows the wheel to better absorb the impact, improve the wear life of the part and the steel track, and reduce the part weight.

FEATURES

- High strength
- Available in “flat” or “V” style
- High load capability

MATERIALS

- Impact Modified Nylon
- Stabilized Nylon



BANG BOARD/ DEAD BLOW

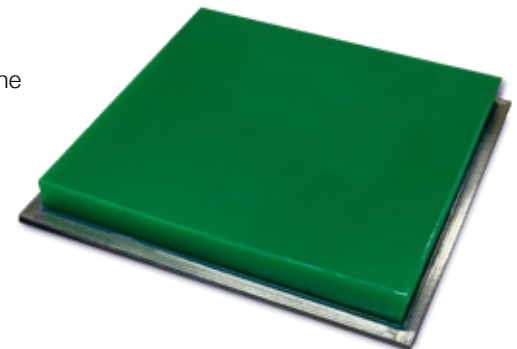
Bang boards are used at transition points in the lumber industry. Manufactured with DPI’s proprietary Energy Absorbing Polyurethane bonded to a mounting steel plate and designed with a harder wear-resistant surface, it allows the timber to slide sideways off the board during transition. It is also ideal for absorbing the energy from various impact transitions, saving the product ends from splintering or degrading, and protecting the framework from damage.

FEATURES

- Proprietary EA-55 urethane for 98% shock absorption
- Highly reduces noise levels and vibration
- Protection of finished product
- 70D urethane or steel wear surface options

MATERIALS

- EA-55 Urethane
- Steel



ROLLERS

Rollers are used in many conveying applications in the wood product industry. One of the highest grades of roller is made from our proprietary blend of injection molded UHMW which offers high wear, self-lubrication, corrosion resistance, and low cost. They are also available in many different blends of plastic.

FEATURES

- Non-corrosive
- Self-lubricating
- High strength/high wear
- Lightweight
- Cost efficient

MATERIALS

- UHMW-PE
- Nylon
- Polyurethane



VENEER KNOCK DOWN ARMS

Whether it's Raute-Wood or other brand names, our knockdown arm bodies are made from high grade 14 layered plywood or reinforced UHMW, and then gripped with serrated 90A high-wear polyurethane. We manufacture this brand new or can offer rebuilds by re-gripping the Urethane and re-bushing the Clevis holes.

FEATURES

- CIP ORCTO bushings
- Non marking
- Various lengths available
- Can be recoated for repeatable uses

MATERIALS

- Polyurethane
- UHMW-PE
- 14" PLY Plywood



DRYER HOLD DOWN WHEELS

These are used as hold down wheels on the infeed of the dryer system. The softer elastomer coating adds to their versatility in conveying uses where high traction and high grip are a must.

FEATURES

- Durable hub
- High grip
- Non-marking
- Various sizes available

MATERIALS

- Monoprene
- Polyurethane
- Copolymer PP



UHMW OREGON BENDS

Made from UHMW, these components are typically machined to size or thermal formed to the correct radius for your needs. They are low friction, high wear, and cost-effective. We have been manufacturing Oregon bends for decades with great success providing alternatives for idler sprockets.

FEATURES

- Machined for various chain styles
- Protects chain from metal-to-metal wear
- Low coefficient of friction for smooth chain flow

MATERIALS

- UHMW-PE



WEAR STRIPS + WELD WASHERS

Wear strips are custom cut to fit a variety of applications. These are manufactured from UHMW-PE for high wear and low friction. Weld Washers are used in various materials to secure the strip.

FEATURES

- Available up to 10'
- Low coefficient of friction
- Washers available in various materials for best application

MATERIALS

- STRIP-UHMW-PE
- WELD WASHER-Aluminum, Stainless Steel, Mild Steel



CHAIN GUIDES

UHMW-PE chain guides have a very low coefficient of friction that results in lower energy consumption, increased chain life, and significant reductions in operating costs.

FEATURES

- Up to 10' lengths
- 6X more abrasion resistant than steel
- Extreme shock absorption

MATERIALS

- UHMW-PE
- Nylon



GEAR RACKS + SPUR GEARS

Gears provide for smooth quiet operation without lubrication. These parts are completely corrosion resistant and absorb impact loads better than steel gears. In addition, they do a better job of distributing localized loads caused by misalignment.

FEATURES

- Various tooth profiles
- Completely corrosion resistant
- Various bore sizes

MATERIALS

- Acetal
- Nylon
- Polyurethane
- Laminate
- Oil Filled Nylon
- UHMW-PE
- Molly Filled Nylon



ROLL END BEARINGS

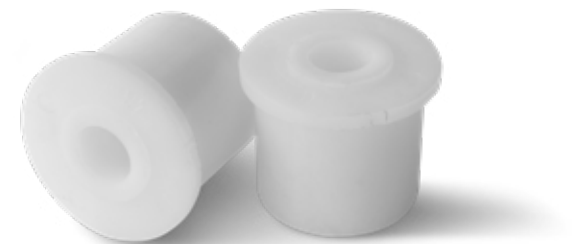
Roll end bearings are used widely in a variety of industries and applications. Used with PVC, steel, or stainless steel tubings, these bearings provide simple, quiet, and reliable conveying.

FEATURES

- High wear
- Chemical resistant
- Standard and custom sizes available

MATERIALS

- UHMW-PE
- Nylon



TIPPLE ARM

Tipple arm bodies cycle quicker with less inertia. They can be designed with UHMW and a live nose roller, or cast polyurethane with stationary AR steel nose.

FEATURES

- Option steel insert for increased strength
- Available with solid style nose or replaceable nylon “live” nose roller
- Custom styles and tooth count available

MATERIALS

- UHMW-PE
- Nylon
- Polyurethane



SUCTION RINGS

Suction rings are used primarily in plywood facilities to pick up and move sheets of plywood, MDF, or particleboard.

FEATURES

- Cast or injection molded available
- Highly durable
- Increased suction due to heavy duty urethane

MATERIALS

- Polyurethane



BOARD TURNER

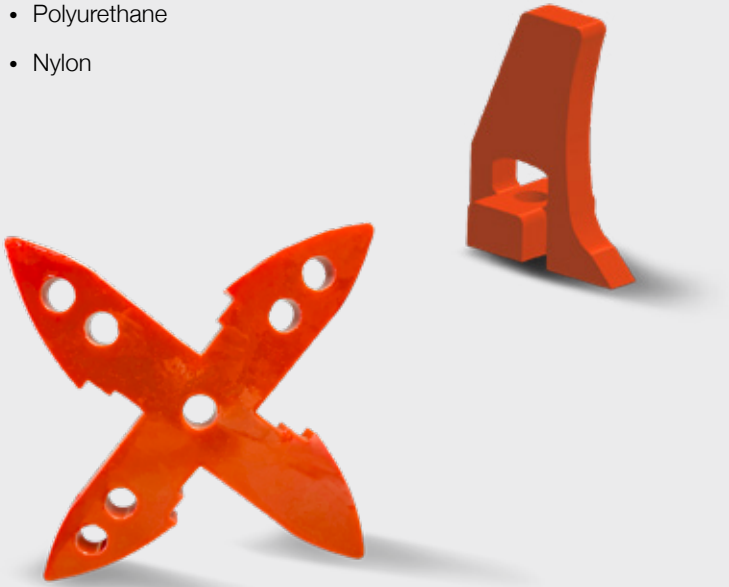
These are used to flip studs in the timber conveying and grading process instead of manual board turning.

FEATURES

- Removes stress from manual board turning
- Used in conjunction with Lug
- Accommodate various stub sizes

MATERIALS

- Polyurethane
- Nylon



LUMBER CART WHEELS

Designed to replace traditional 12" Phenolic Cart Wheels, these are molded from abrasion resistant UHMW-PE as a cost effective direct replacement that will outlast all other cart wheels. These are highly durable and almost impossible to destroy. They are molded with 1" pilot bores and can be reamed to fit multiple shaft sizes.

FEATURES

- High impact
- Nonbreaking/highly durable
- Self-lubricating

MATERIALS

- UHMW-PE



HOT PRESS PLATEN GUIDES

Hot pressing is used during the creation of fiberboard. The fiber is heated and pressed between hot plattens and these non-metallic platten guides withstand the heat and wear of the tie bars, outlasting the original brass guides.

FEATURES

- High temperature resistance
- Excellent wear
- Self-lubricating

MATERIALS

- CIP



STEEL CAPPED SPLIT BEARINGS

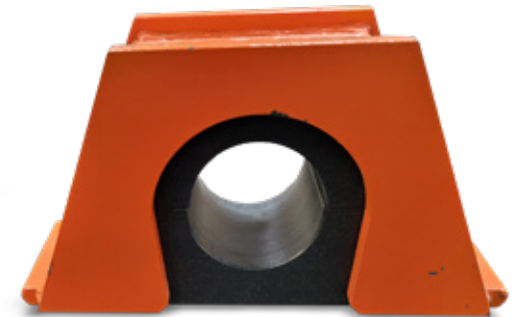
Our steel capped split pillow block bearings are designed to outlast conventional Babbitt pillow blocks. Our heavy-duty housing are made of welded steel, then powder coated for corrosion resistance. The “No lube” UHMW-PE inserts combined with these units are virtually maintenance free. These bearings are widely used as problem solvers in the harshest of industrial environments.

FEATURES

- Features 2 or 4 bolt patterns
- Fits any size shaft
- High load rating

MATERIALS

- Steel Housing
- UHMW-PE
- Nylon



RATTLE ROLLS

Rattle Rolls, or Beater Bars, are used on the return sides of the drive pulley to help shake and release material from returning with the belt. Our UHMW-PE Rattle Rolls can be used as a stand-alone, or in conjunction with our Scraper Blades. The UHMW-PE is easier on the belt than steel versions, which can become sharp and cause wear and tear on the expensive belt, as well as load-up with sticky material.

FEATURES

- Abrasion resistant
- Non stick surface
- Lightweight

MATERIALS

- UHMW-PE



URETHANE CROWN PULLEY

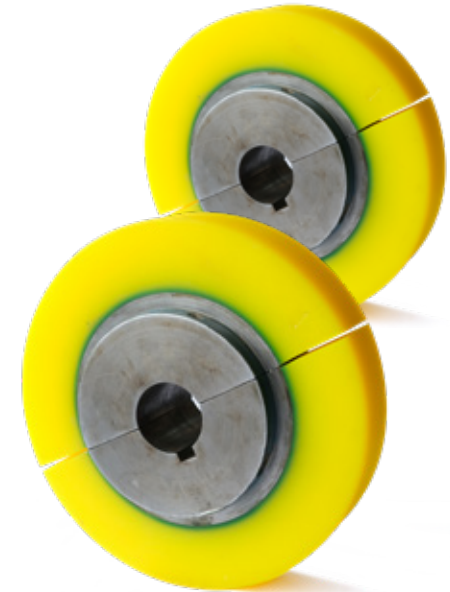
We recover and manufacture Polyurethane Crown Pulleys. They can be split style or solid design. Most pulley bodies are cast aluminum or steel that we easily bond and finish machine our industrial grade polyurethane for the timber industry. These pulleys are typically used as belt drives or idlers for 4" to 8" wide belts for veneer, plywood, panel, etc. We can custom crown any shape required.

FEATURES

- High abrasion resistance
- High grip
- 100% bond

MATERIALS

- 90A Polyurethane





THE RANGE OF OUR
CAPABILITIES ARE
LIMITLESS

ANYTHING IS POSSIBLE WITH DPI AS **YOUR PARTNER**

No matter your part, material, application, or industry, we'll find the best solution for your situation.

From custom-engineering components and building prototypes in house to injection molding pieces with unique shapes or features to efficiently producing parts for short runs or high-production lines to help reduce costs, we can make it happen.

Our team includes plastics engineers as well as materials and production innovators – ready to collaborate and bring their unique areas of expertise to your challenge.

Plastics are a top material solution for innovation in a wide range of industries.

Ready for a better way? Some of the benefits that you'll realize when you bring plastics from DPI into your approach include:

- Reduced material and production costs
- Resistance to abrasion and wear
- Reduced friction compared to metals
- Resistance to chemicals, moisture, and corrosion
- Improved long-term durability and useful life
- Range of plastics types to suit the application
- Opportunities to recycle or reuse plastic materials

Plastics are lightweight yet have the strength to outperform metals in many situations. Additionally, the process of manufacturing plastic is significantly quicker and more efficient than manufacturing metal.



From concept to creation, we are your most comprehensive plastics parts manufacturer.

With the ability to utilize a variety of plastics manufacturing and production processes under one roof, we always have the best approach to shorten lead times, maximize efficiency, and adapt to your needs.

- Custom Fabrication
- Machining
- Injection Molding
- Injection Molding UHMW-PE
- Urethane Casting
- Thermoforming
- Plastics Welding
- Vacuum Forming
- Overmolding of Steel Parts
- QC Testing
- Stamping, Labeling Parts ID
- MultiFab Hybrid Components™ Solutions

TOP NOTCH PERFORMANCE

Selecting the right type of plastic material for every application.

With our expertise in all things plastic, we'll find the best solution for your part by considering factors like design, impact resistance, wear resistance, and viscosity – as well as your production and cost objectives.

There are hundreds of types of polymer materials with hundreds of potential applications. We can also incorporate custom resins, additive packages, and color matches to ensure you have the right plastic for the job.

Discover the unique characteristics and benefits of the many plastic materials solutions available. We work with a wide range of industrial plastics, polymers, and thermoplastics materials including:

- ABS Plastic
- Acrylic
- Delrin®
- HDPE / LDPE
- HYDEX®
- Nylon
- PET
- Phenolics
- Polycarbonates
- Polypropylene
- Polysteel
- Polystone®
- Polystyrene
- Polyurethanes
- PVC
- Rulon®
- Sintimid™
- Styrene
- Teflon®
- Thermoplastic
- UHMW-PE
- Ultem™ PEI
- Urethanes
- Vinyl



METAL COMPONENTS CAN
EXHIBIT RUST WITHIN HOURS OF
EXPOSURE TO THE ELEMENTS

DPI's plastic **parts** **never rust**

and remain functional for extended periods of time without
breaking down or degrading in material quality.



ABOVE
A CUT

MISSION

Pursue creative plastic solutions with determination and energy to achieve more

OUR VALUES

PEOPLE FIRST

Creating opportunities by encouraging collaboration, continuous learning, and investing in the personal growth of our team and customers

Valuing our team members and customers by treating them as vital partners

CUSTOMER CENTRIC

Doing whatever it takes to deliver the ultimate customer experience through creative problem solving, innovative engineering, responsive service, and unique, state-of-the-art plastic products

Every interaction with our customers is an opportunity to build a lasting relationship based on trust, reliability, and mutual success

Actively listen to customer feedback to deliver quality solutions that meet or exceed expectations

PROGRESSIVE MINDSET

Leveraging years of experience and expertise with the relentless energy and excitement of a new company to revolutionize the future of plastics and our company

Challenge the status quo by thinking differently and creatively in all aspects of our product development

Always pursuing innovative solutions with our multiple capabilities to solve problems no one else can



QUALITY AND VALUE FOR THE LONG RUN

Competitive pricing and responsive service is our promise.

As a progressive and determined company, we're able to ensure that our pricing is always competitive – so you can relax knowing you're getting the best quality plastic parts at the best prices.

And with our plastics expertise in every industry, you've got a knowledgeable, reliable team to call on for everything you need.

For information or pricing quotes, contact us today.

800.321.0084

email: sales@dpiplastics.com





Get a quote on your project today!

Call 800.321.0084 or visit
www.dpiplastics.com

3721 Grant Creek Road
Missoula, MT 59808

sales@dpiplastics.com



Manufactured in the U.S.A.