

**PROVEN PLASTIC  
COMPONENTS  
FOR HIGH  
PERFORMANCE  
CUTTING, SORTING  
AND CONVEYING  
MACHINES**

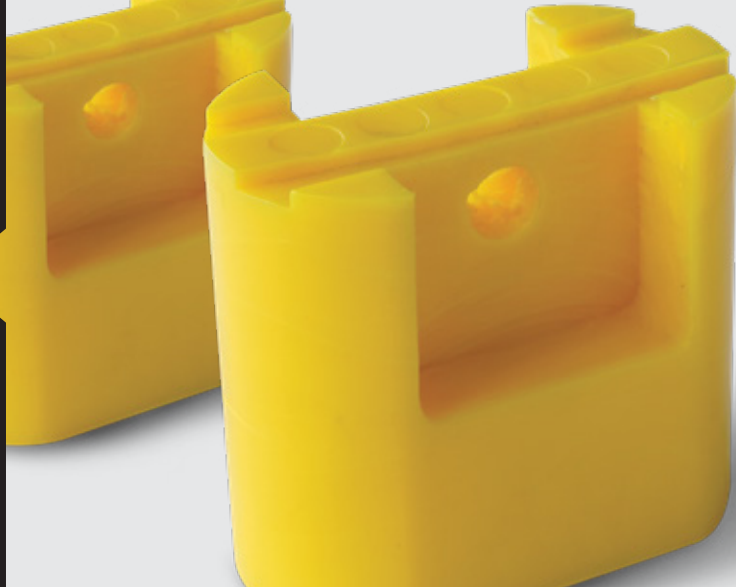
**A CUT  
ABOVE**



No Matter How You  
Cut It, **Our Plastic  
Parts Will Help  
You Finish It.**

For over 40 years, Diversified Plastics has been a proven plastic parts provider to the Lumber Industry. It's the machinery and equipment you depend on to mill and fill your orders. From intake and rough sorting to loading for delivery, we see to it that lumber operations run as smoothly and cost effectively as possible with minimum maintenance or downtime.

Diversified Plastics Parts  
Provide The Hard Working  
Solutions To Make your  
Equipment Run Smoother,  
Quieter, Longer and More  
Cost Effectively



## Why Plastic Parts?

Diversified Plastics has mastered the art of injection molding Industrial Grade Polymers to meet custom designs and sizes. Our expertise extends the full range of polymers including:

- Energy Savings from weight reduction on system parts
- Industrial Grade Plastics – UHMW-PE, Nylon, Polyurethane, and more
- Cost Savings from Replacement Parts
- Maintenance-free components requiring no costly lubrication
- Noise reduction
- Lighter weight than steel, cast urethane or other materials
- High strength, longer wear and low friction
- Shock Absorption
- Minimized galling for extended Mill Chain life
- Gentler on Gear Boxes
- Less load on motors

### Logs to Lumber, Diversified Plastics conveying components are used in:

- Sawmill Infeed
- Debarkers
- Trimmers
- Graders
- Dry Kilns
- Planers
- Stackers, and more

### For that equipment, Diversified Plastics Injection Molded components include:

- Sprockets
- Chain Tops
- Chain Lugs
- Carry Over Wheels
- Urethane Rollers
- Hold Down Wheels
- Tipple Diverter Arms and Bearings
- J-Hooks and Slider Blocks
- Impact Bumpers, and more

## Why Diversified Plastics?

We have been a leading supplier to Lumber Mills for over 40 years! We know your business and offer high quality/ low cost alternatives to Lumber Mill Sorter Systems.

- Lumber Mills move raw materials – from Logs to Lumber, our Industrial Grade Plastics provide virtually flawless and efficient conveyance that minimizes maintenance and downtime.
- Our proprietary Injection Molding capabilities of UHMW-PE along with other Industrial Grade Plastics including cast urethane confirm long-term cost reductions in larger volume replacement components, safety and performance advantages.

Whether your company makes the equipment that keeps lumber processing moving or it mills the lumber for retail and commercial sale, **you can depend on Diversified Plastics** OEM and replacement parts to keep up with your operation's needs for the best value and lumber quality.



It's time you found out more. Contact us.



We Put Polymers To Work For You.  
Get A Quote On Your Project Today!  
Call 800-321-0084 Or Visit  
[www.dpiplastics.com](http://www.dpiplastics.com)