



**DIVERSIFIED
PLASTICS, INC.**

Engineered Plastics

Designed for the Way
You Do Business



www.dpiplastics.com

We fit your business.



Even the smallest, most inexpensive part affects your bottom line because it impacts your manufacturing process, your material costs, your pricing, and your ability to meet your own customers' needs. Choosing the right supplier for custom plastic components can make a big difference in the success and profitability of your company.

At Diversified Plastics, Inc., we've been designing, fabricating and molding plastic parts for a wide range of industrial and OEM applications since 1976. We've become known for our ability to fulfill unique requests, meet urgent time frames, solve difficult applications, and stay within tight budget constraints —all while meeting your standards for quality.

While plastic components are often specified to save money, our clients have come to expect more than value. At Diversified Plastics, we start each project with a question-and-answer phase that ensures we have every piece of information we need. Then we use the best minds and best equipment in the industry to deliver components that meet or exceed your parameters and requirements. We can even combine various processes and materials to create a single part.

With Diversified Plastics, you get more than custom parts that fit your application. You get a manufacturing partner — an experienced supplier who fits your business.

Diversified Plastics provides custom plastic components throughout the U.S. and abroad.

In addition to serving the wastewater industry, our parts fit a variety of applications and industries including:

- food processing
- packaging
- forest products
- agricultural
- manufacturing
- plant maintenance
- and many more.

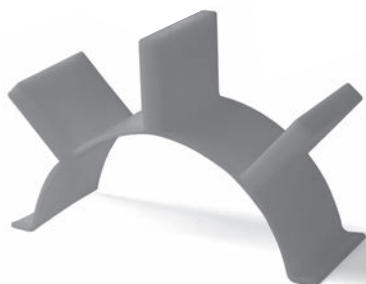
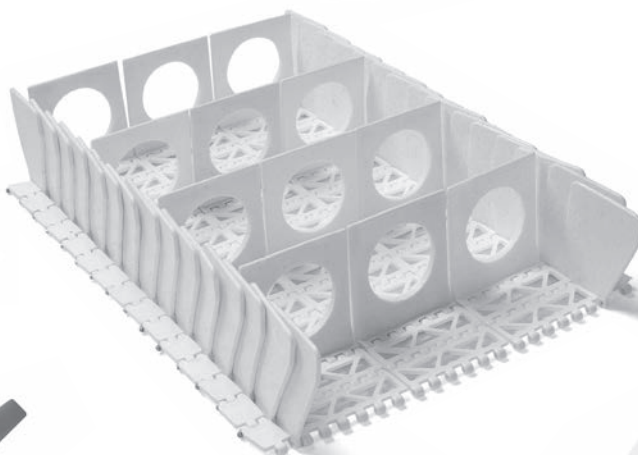
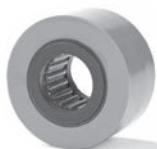




TABLE OF CONTENTS

ENGINEERED PLASTIC POWER TRANSMISSION PRODUCTS

BEARINGS & BUSHINGS 1

Pillow Block Bearing	2
Stainless Steel Shaft Protector Inserts.....	3
Flange Bearings 2-Bolt & 4-Bolt.....	4
Self-Aligning Bearing Insert.....	5
Self-Aligning Bearing Housings Pillow Block Style	6
Self-Aligning Bearing Housings 2-Bolt & 4-Bolt Flange.....	7
Split Pillow & Split Block Bearing	8
Steel Capped Split Bearings	9
Split Tipple Bearing	10
Kiln Cart Bushings	11
Dryer Hanger Bearing.....	12
Hanger Bearings	13
Roll End Bearings	14-16

DRIVE COMPONENTS..... 17

SPROCKETS..... 17

Plastic Roller Chain.....	18-19
Roller Chain Sprockets.....	20-24
Solid Torque Drives™	25
Drive Hubs - Roller Chain Sprockets & Gears.....	26
Flat Wire Belt Sprockets.....	27
Wire Belt Sprockets.....	28-29
Flat-Top Conveyor Sprockets.....	30-31
AG Chain Sprockets.....	32
Mill Chain Sprocket.....	33
Drag Chain Sprocket.....	34
Drag Chain Idler Drums.....	35

GEARS 36

Spur Gears	37
Gear Racks.....	38

BELT PULLEYS 39

Timing Belt Pulleys	40
V Belt Sheaves.....	41
Can Line Pulley.....	42

WHEELS & ROLLERS 43

Molded Rollers	44
----------------------	----

AUGERS & ACCESSORIES..... 45

Metering & Spice Augers.....	46
------------------------------	----

CONVEYOR BELT ACCESSORIES..... 47

Rattle Roll.....	48
Vibrating Conveyor Replacement Springs.....	49

CHAIN GUIDES & ATTACHMENTS..... 50

Chain Guide	51-52
Thin Gauge Wear strip.....	53
Fasteners	54
Standard UHMW Strip Fastening Recommendations	55
Diversa-Track - Curved & Straight Track for Table Top Chain....	56
UHMW Oregon Bend.....	57
Chain Tops.....	58

POLYURETHANE PRODUCTS..... 59

Diversaliner	60
EA-55 Polyurethane.....	61
Spreader Wheels Sand, Salt & Fertilizer	62
Urethane Rolls.....	63
Urethane Wheel Recover.....	64
Urethane Crown Pulley.....	65

TABLE OF CONTENTS

ENGINEERED PLASTIC POWER TRANSMISSION PRODUCTS

PRODUCTS FOR SPECIFIC INDUSTRIES 66

LUMBER MILL..... 66

Carriage Wheels.....	67
Carry-Over Wheel.....	68
Diverter Arms.....	69
Even Ending Roll.....	70
J-hooks.....	71
Pusher Lugs.....	72
Roller Lugs & Lug Pins.....	73
Slider Blocks.....	74
Sticker Placement Arms.....	75
Swede Roll.....	76
Tipple Arm.....	77
Veneer & Lumber Cart Wheels.....	78

PANEL..... 79

Forming Line Perforated Plate.....	80
Polyurethane Panel Turner Accessories.....	81
Hot Press Platen Guides.....	82
Press Charger Star Gears.....	83
Suction Rings.....	84

PLYWOOD..... 85

Dryer Hold Down Wheel.....	86
Raymond Plugger Gears.....	87
Rotary Clipper Shear.....	88
Skinner Deck Hold Down Wheel.....	89
Veneer Knockdown Arm.....	90
Knock Down Arm Cylinder External Cushion.....	91

PULP & PAPER..... 92

Paper Roll Crane Hook Liners.....	93
Reel Spool & Roll Cushions.....	94
Roll Handling Stops & Bumpers.....	95
Scalping Roll Spacers.....	96
Suction Box Cover.....	97
Tidland Core Shaft Cradle.....	98
Venturi Dampers.....	99

FOOD..... 100

MINING..... 101

AGRICULTURE..... 102

GYPSUM..... 103

Discharge Port.....	104
Hard Edge Port.....	105
Transition Boot.....	106

BEARINGS & BUSHINGS

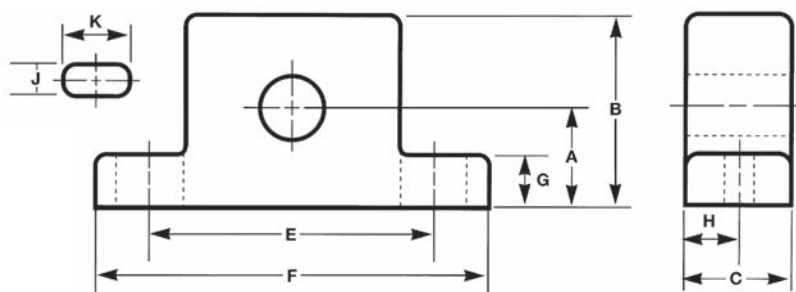
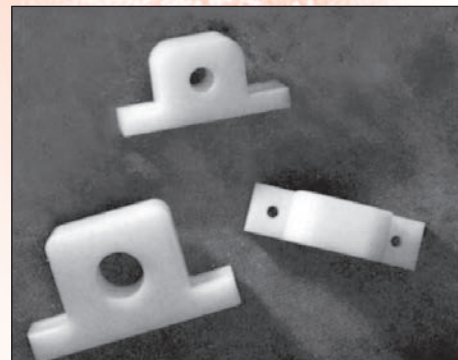


**DIVERSIFIED
PLASTICS, INC.**

Engineered plastics designed for the way you do business.

PILLOW BLOCK BEARING

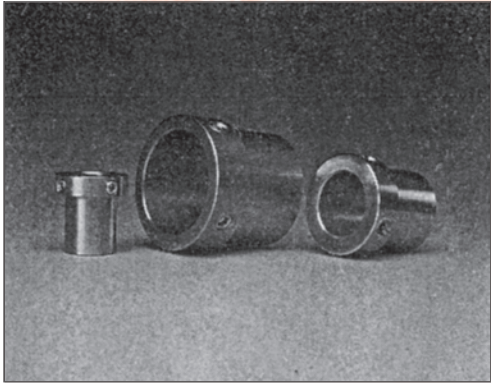
Diversified Plastics' pillow block bearings will interchange with most standard units. These bearings excel in wet and corrosive environments where high performance and low maintenance is desired.



MATERIAL CHART	
UH	Natural UHMW
AC	Natural Acetal
T	Virgin PTFE
FGN	Food Grade Oil-Filled Nylon
NL	Green Oil-Filled Nylon

Part No.	Nom. Bore (in)	A	B	C	E	F	G	H	J	K	Bolt Size
PB2B050	1/2"	1-3/16"	2-3/16"	1-1/2"	3-3/8"	4-3/4"	5/8"	3/4"	7/16"	7/8"	3/8"
PB2B062	5/8"	1-3/16"	2-3/16"	1-1/2"	3-3/8"	4-3/4"	5/8"	3/4"	7/16"	7/8"	3/8"
PB2B075	3/4"	1-5/16"	2-1/2"	1-1/2"	3-3/4"	5-1/4"	5/8"	3/4"	7/16"	15/16"	3/8"
PB2B087	7/8"	1-7/16"	2-3/4"	1-1/2"	4"	5-1/2"	3/4"	3/4"	7/16"	15/16"	3/8"
PB2B100	1"	1-7/16"	2-3/4"	1-1/2"	4"	5-1/2"	3/4"	3/4"	7/16"	15/16"	3/8"
PB2B112	1-1/8"	1-11/16"	3-1/4"	1-1/2"	4-3/4"	6-1/4"	7/8"	3/4"	9/16"	1-1/16"	1/2"
PB2B118	1-3/16"	1-11/16"	3-1/4"	1-1/2"	4-3/4"	6-1/4"	7/8"	3/4"	9/16"	1-1/16"	1/2"
PB2B125	1-1/4"	1-7/8"	3-5/8"	1-3/4"	5"	6-1/2"	7/8"	7/8"	9/16"	1-1/16"	1/2"
PB2B137	1-3/8"	1-7/8"	3-5/8"	1-3/4"	5"	6-1/2"	7/8"	7/8"	9/16"	1-1/16"	1/2"
PB2B143	1-7/16"	1-7/8"	3-5/8"	1-3/4"	5"	6-1/2"	7/8"	7/8"	9/16"	1-1/16"	1/2"
PB2B150	1-1/2"	2"	4"	1-3/4"	5-3/8"	7"	7/8"	7/8"	9/16"	1-1/16"	1/2"
PB2B175	1-3/4"	2-1/8"	4-1/4"	2"	5-3/4"	7-1/2"	7/8"	1"	9/16"	1-1/16"	1/2"
PB2B194	1-15/16"	2-1/4"	4-1/2"	2"	6-1/4"	8"	7/8"	1"	11/16"	1-3/16"	5/8"
PB2B200	2"	2-1/2"	5"	2"	6-3/4"	8-3/4"	1"	1"	11/16"	1-5/16"	5/8"
PB2B218	2-3/16"	2-1/2"	5"	2"	6-3/4"	8-3/4"	1"	1"	11/16"	1-5/16"	5/8"
PB2B225	2-1/4"	2-3/4"	5-1/4"	2-1/2"	7-1/2"	9-1/2"	1"	1-1/4"	11/16"	1-5/16"	5/8"
PB2B237	2-3/8"	2-3/4"	5-1/4"	2-1/2"	7-1/2"	9-1/2"	1"	1-1/4"	11/16"	1-5/16"	5/8"
PB2B243	2-7/16"	2-3/4"	5-1/4"	2-1/2"	7-1/2"	9-1/2"	1"	1-1/4"	11/16"	1-5/16"	5/8"

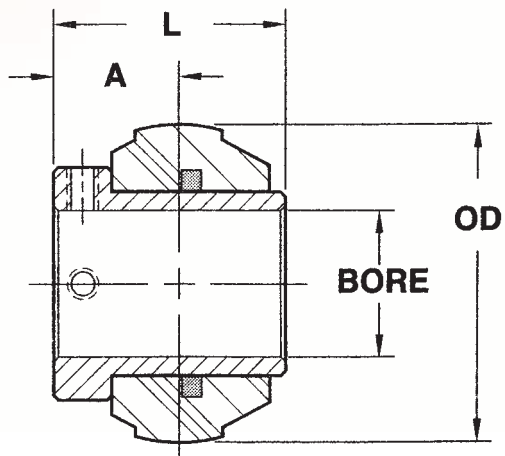
STAINLESS STEEL SHAFT PROTECTOR INSERTS



Stainless Steel Shaft Protectors



Stainless Steel Shaft Protector with Oil-Filled Nylon Inserts



Stainless Steel Shaft Protector & Polymer Insert

Stainless Steel Shaft Protectors and Special Inserts

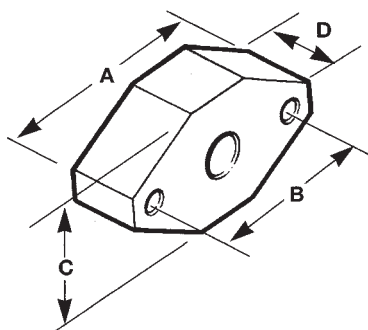
Series	Part No. Shaft Protector	Oil-Filled UH Insert for use w/ Shaft Protector	Oil-Filled Nylon Insert for use w/ Shaft Protector	Bore	OD	A	L
204	BSSZ2412	BSCi5400	BNFi5400	3/4	1.850	.81	1.44
205	BSSZ2513 BSSZ2514 BSSZ2515 BSSZ2516	BSCi5500	BNFi5500	13/16 7/8 15/16 1	2.047	.80	1.50
206	BSSZ2617 BSSZ2618 BSSZ2619	BSCi5600	BNFi5600	1-1/16 1-1/8 1-3/16	2.441	1.11	1.82
207	BSSZ2720 BSSZ2721 BSSZ2722 BSSZ2723	BSCi5700	BNFi5700	1-1/4 1-5/16 1-3/8 1-7/16	2.835	1.14	1.96
208	BSSZ2824 BSSZ2825	BSCi5800	BNFi5800	1-1/2 1-9/16	3.150	1.23	2.03

FLANGE BEARINGS 2-BOLT & 4-BOLT

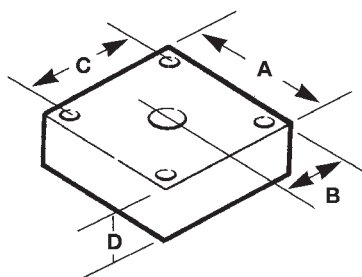
These 2-bolt and 4-bolt flange bearings are ideal for tough environments where high performance and low maintenance are desired. These bearings will interchange with most standard units.



Material Chart	
UH	Natural UHMW
AC	Natural Acetal
T	Virgin PTFE
FGN	Food Grade Oil-Filled Nylon
NL	Green Oil-Filled Nylon



Part No.	2-Bolt Bore	A	B	C	D
FB2B050	1/2"	3-7/8"	3"	2-1/8"	1-1/4"
FB2B075	3/4"	4-7/16"	3-9/16"	2-1/2"	1-1/2"
FB2B100	1"	4-15/16"	3-7/8"	2-3/4"	1-1/2"
FB2B118	1-3/16"	5-5/8"	4-5/8"	3-1/4"	1-1/2"
FB2B125	1-1/4"	6-1/8"	5-1/8"	3-5/8"	1-3/4"
FB2B143	1-7/16"	6-1/8"	5-1/8"	3-5/8"	1-3/4"
FB2B150	1-1/2"	6-13/16"	5-5/8"	4"	2"



Part No.	4-Bolt Bore	A	B	C	D
FB4B050	1/2"	3"	1-1/2"	2-1/8"	1"
FB4B075	3/4"	3-3/8"	1-11/16"	2-1/2"	1-1/4"
FB4B100	1"	3-3/4"	1-7/8"	2-3/4"	1-1/4"
FB4B118	1-3/16"	4-1/4"	2-1/8"	3-1/4"	1-1/2"
FB4B125	1-1/4"	4-3/4"	2-1/8"	3-5/8"	1-1/2"
FB4B143	1-7/16"	4-3/4"	2-3/8"	3-5/8"	1-1/2"
FB4B150	1-1/2"	5-1/8"	2-9/16"	4"	1-3/4"
FB4B194	1-15/16"	5-1/2"	2-3/4"	4-3/8"	1-3/4"
FB4B200	2"	6-3/8"	3-3/16"	5-1/8"	1-3/4"
FB4B243	2-7/16"	6-7/8"	3-7/16"	5-5/8"	2"

SELF-ALIGNING BEARING INSERT



Stainless Steel Ball Bearing Insert

Diversified Plastics' self-aligning bearing inserts are interchangeable with all standard pillow block, tap base, take up or flange bearing housing. These inserts are excellent in the food and packaging industry and are ideal for replacing rusty roller or ball bearing inserts in corrosive or wet applications and require minimal maintenance. Many FDA accepted materials are available to choose from and custom sizes are available.

Stainless Steel Ball Bearing Insert

Shaft Dia.	Part. No Stainless Steel Insert	Boundary Dimensions (inches)									Load Rating (lbs.)	
											Dynamic	Static
		d	D	B	C	r _{min}	S	S _i	G	d _s	C _r	C _{or}
3/4	BSSi0012	0.7500	1.8504	1.2205	.6693	.0394	.5000	.7205	.1772	1.1654	2230	1500
1	BSSi0016	1.0000	2.0472	1.3425	.6693	.0394	.5630	.7795	.1969	1.3346	2430	1770
1-3/16	BSSi0019	1.1875	2.4409	1.5000	.7480	.0394	.6260	.8740	.1969	1.6063	3350	2540
1-1/4	BSSi0020	1.2500	2.8346	1.6890	.7874	.0591	.6890	1.0000	.2362	1.8425	4430	3440
1-7/16	BSSi0023	1.4375	2.8346	1.6890	.7874	.0591	.6890	1.0000	.2360	1.8425	4480	3480
1-1/2	BSSi0024	1.5000	3.1496	1.9370	.8268	.0591	.7480	1.1890	.3150	2.0866	5025	4010

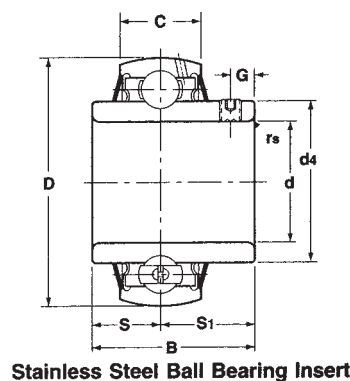
Larger and metric bore sizes also available.

MATERIAL CHART

UH	Natural UHMW
NL	Green Oil-Filled Nylon
FGN	Food Grade Oil-Filled Nylon
T	PTFE

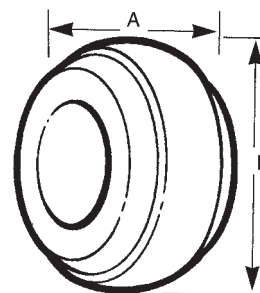


Non-metallic Bearing



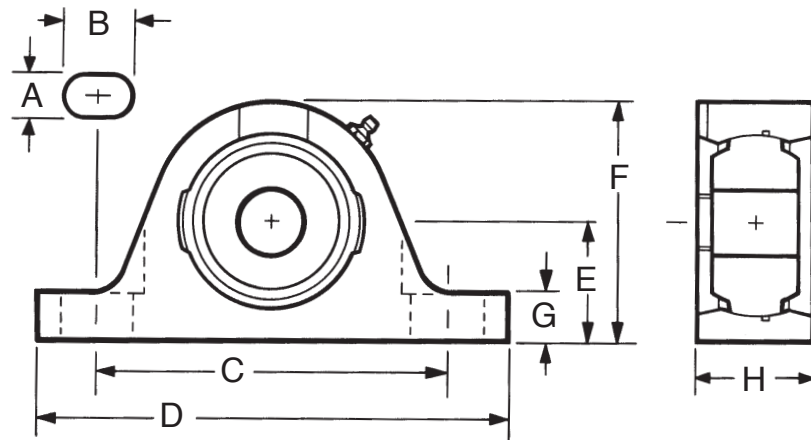
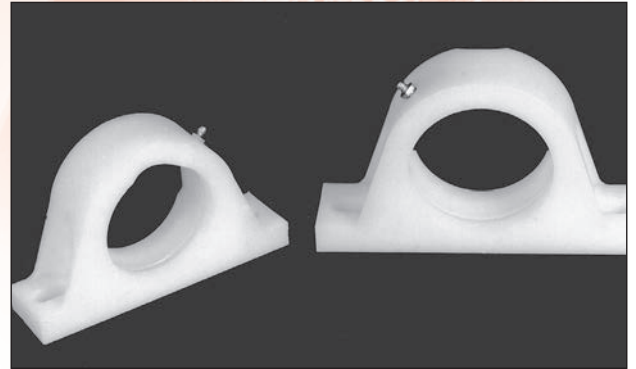
Stainless Steel Ball Bearing Insert

Part No.	Bearing Style	Bore	A	B
SA050	203	1/2"	.875"	1.575"
SA062	203	5/8"	.875"	1.575"
SA075	204	3/4"	1.250"	1.850"
SA087	205	7/8"	1.250"	2.047"
SA100	205	1"	1.250"	2.047"
SA118	206	1 3/16"	1.375"	2.441"
SA125	207	1 1/4"	1.500"	2.835"
SA143	207	1 7/16"	1.500"	2.835"
SA150	208	1 1/2"	1.500"	3.150"
SA175	209	1 3/4"	1.500"	3.346"
SA187	210	1 7/8"	1.500"	3.543"
SA193	210	1 15/16"	1.500"	3.543"



SELF-ALIGNING BEARING HOUSINGS PILLOW BLOCK STYLE

Diversified Plastics' non-metallic self-aligning bearing housings are an excellent replacement for cast iron units. These housings are designed for applications where chemical resistance and easy clean-up or FDA/USDA approval is a necessity. They can be made with or without grease grooves and Zerks for plastic or standard self-aligning inserts.



MATERIAL CHART	
UH	Natural UHMW
AC	Natural Acetal
NY	Natural Nylon

Part No.	Housing Style	Insert Bearing Range	A	B	C	D	E	F	G	H
2BPBSABH 203	203	1/2"-5/8"	7/16"	27/32"	3 5/8"	5 1/16"	1 1/16"	2 1/8"	5/8"	1 1/16"
2BPBSABH 204	204	1/2"-3/4"	7/16"	27/32"	3 3/4"	5 1/4"	1 5/16"	2 9/16"	11/16"	1 3/16"
2BPBSABH 205	205	7/8"-1"	7/16"	27/32"	4"	5 1/2"	1 7/16"	2 3/4"	3/4"	1 5/16"
2BPBSABH 206	206	1 1/16"-1 1/4"	9/16"	15/16"	4 5/8"	6 1/4"	1 5/8"	3 1/4"	7/8"	1 7/16"
2BPBSABH 207	207	1 1/4"-1 7/16"	9/16"	15/16"	5 1/16"	6 11/16"	1 7/8"	3 3/4"	1 1/16"	1 7/8"
2BPBSABH 208	208	1 1/2"-1 5/8"	9/16"	29/32"	5 1/2"	7 1/4"	2 1/8"	4 3/16"	1 3/16"	2"
2BPBSABH 209	209	1 11/16"-1 3/4"	9/16"	29/32"	5 7/8"	7 7/16"	2 1/8"	4 1/4"	1 5/16"	1 7/8"
2BPBSABH 210	210	1 15/16"-2"	11/16"	1 1/32"	6 3/8"	8 1/4"	2 1/4"	4 1/2"	1 7/16"	2 1/4"

Note: Other sizes available upon request.

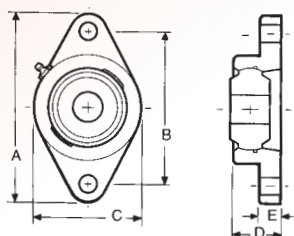
SELF-ALIGNING BEARING HOUSINGS

2-BOLT & 4-BOLT FLANGE

Diversified Plastics' non-metallic self-aligning bearing housings are an excellent replacement for cast iron units. These housings are designed for applications where chemical resistance and easy clean-up or FDA/USDA approval is a necessity. They can be made with or without grease grooves and Zerk for plastic or standard self-aligning inserts.



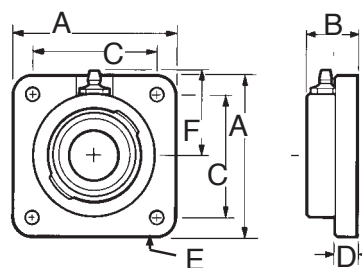
2-Bolt



MATERIAL CHART	
UH	Natural UHMW
AC	Natural Acetal
NY	Natural Nylon

Part No.	Housing Style	Insert Bearing Range	A	B	C	D	E
2BFSABH 203	203	1/2"-5/8"	3 7/8"	3"	2 1/8"	1"	3/8"
2BFSABH 204	204	1/2"-3/4"	4 3/8"	3 17/32"	2 3/8"	1 3/16"	1/2"
2BFSABH 205	205	7/8"-1"	4 7/8"	3 57/64"	2 3/4"	1 3/16"	1/2"
2BFSABH 206	206	1 1/16"-1 1/4"	5 1/2"	4 19/32"	3 1/4"	1 3/8"	1/2"
2BFSABH 207	207	1 1/4"-1 7/16"	6 1/8"	5 1/8"	3 3/4"	1 1/2"	9/16"
2BFSABH 208	208	1 1/2"-1 5/8"	6 3/4"	5 21/32"	4 1/8"	1 5/8"	9/16"
2BFSABH 209	209	1 11/16"-1 3/4"	7 1/16"	5 27/32"	4 3/8"	1 3/4"	5/8"
2BFSABH 210	210	1 15/16"-2"	7 7/16"	6 3/16"	4 9/16"	1 3/4"	5/8"

4-Bolt Style



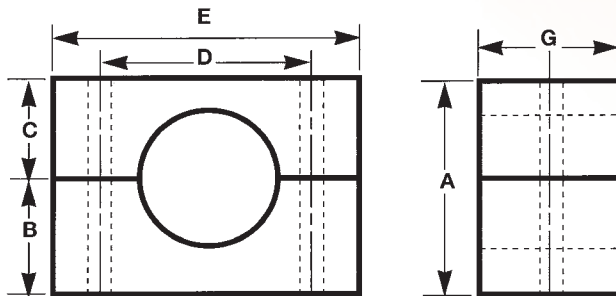
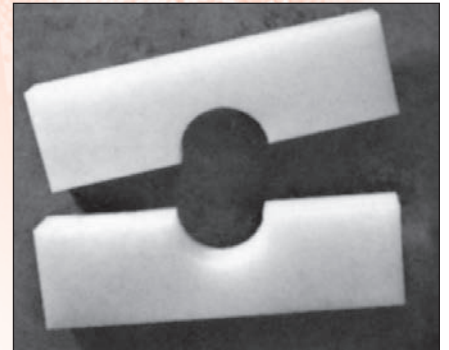
MATERIAL CHART	
UH	Natural UHMW
AC	Natural Acetal
NY	Natural Nylon

Part No.	Housing Style	Insert Bearing Range	A	B	C	D	E	F
4BFSABH 203	203	1/2"-5/8"	3"	7/8"	2 1/8"	7/16"	3/8"	1 11/16"
4BFSABH 204	204	1/2"-3/4"	3 3/8"	1"	2 1/2"	7/16"	3/8"	1 15/16"
4BFSABH 205	205	7/8"-1"	3 3/4"	1"	2 3/4"	1/2"	7/16"	2 1/16"
4BFSABH 206	206	1 1/16"-1 1/4"	4 1/4"	1 1/16"	3 1/4"	1/2"	7/16"	2 3/16"
4BFSABH 207	207	1 1/4"-1 7/16"	4 3/4"	1 3/8"	3 5/8"	9/16"	1/2"	2 7/16"
4BFSABH 208	208	1 1/2"-1 5/8"	5 1/8"	1 3/8"	4"	9/16"	1/2"	2 3/8"
4BFSABH 209	209	1 11/16"-1 3/4"	5 3/8"	1 1/2"	4 1/8"	5/8"	1/2"	2 3/4"
4BFSABH 210	210	1 15/16"-2"	5 5/8"	1 1/2"	4 3/8"	5/8"	1/2"	2 7/8"

Note: 3-Bolt style and different sizes that are not listed can be supplied.

SPLIT PILLOW & SPLIT BLOCK BEARING

Diversified Plastics' split pillow block bearings will interchange with most standard units. These bearings excel in wet and corrosive environments where high performance and low maintenance is desired.

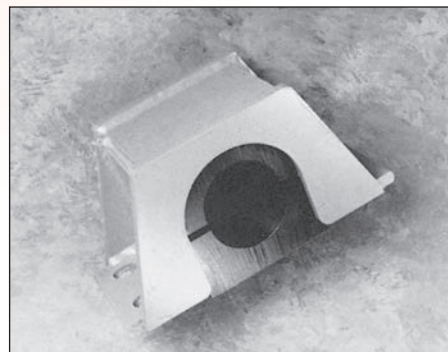


Part No.	2 Bolt Nom. Bore	A	B	C	D	E	G	Bolt Size
PBS2B050	1/2"	2-3/16"	1-3/16"	1"	3-3/8"	4-3/4"	1-1/2"	3/8"
PBS2B062	5/8"	2-3/16"	13/16"	1"	3-3/8"	4-3/4"	1-1/2"	3/8"
PBS2B075	3/4"	2-1/2"	1-5/16"	13/16"	3-3/4"	5-1/4"	1-1/2"	3/8"
PBS2B087	7/8"	2-3/4"	1-5/16"	1-5/16"	4"	5-1/2"	1-1/2"	3/8"
PBS2B100	1"	2-3/4"	1-7/16"	1-5/16"	4"	5-1/2"	1-1/2"	3/8"
PBS2B106	1-1/16"	3-1/4"	1-11/16"	1-9/16"	4-3/4"	6-1/4"	1-1/2"	1/2"
PBS2B112	1-1/8"	3-1/4"	1-11/16"	1-9/16"	4-3/4"	6-1/4"	1-1/2"	1/2"
PBS2B118	1-3/16"	3-1/4"	1-11/16"	1-9/16"	4-3/4"	6-1/4"	1-1/2"	1/2"
PBS2B125	1-1/4"	3-5/8"	1-7/8"	1-3/4"	5"	6-1/2"	1-3/4"	1/2"
PBS2B143	1-7/16"	3-5/8"	1-7/8"	1-3/4"	5"	6-1/2"	1-3/4"	1/2"
PBS2B150	1-1/2"	4"	2"	2"	5-3/8"	7"	1-3/4"	1/2"
PBS2B175	1-3/4"	4-1/4"	2-1/8"	2-1/8"	5-3/4"	7-1/2"	2"	1/2"
PBS2B194	1-15/16"	4-1/2"	2-1/4"	2-1/4"	6-1/4"	8"	2"	5/8"

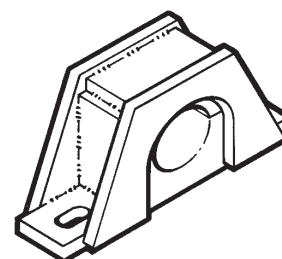
Note: Other sizes available upon request.

STEEL CAPPED SPLIT BEARINGS

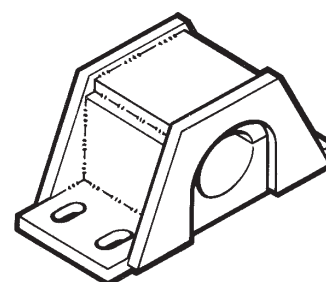
Diversified Plastics' steel capped split pillow block bearings are designed to outlast conventional Babbitt pillow blocks. Our heavy duty housings are made of welded steel, then powder coated for corrosion resistance. Combine this with low cost easily replaceable "No Lube" UHMW inserts and these units are virtually maintenance free. These bearings are widely used as problem solvers in the harshest of industrial environments.



Product	Part No.	Bore	Shaft Center	Length Through Bore	Bolt Center	OAH
2 Bolt	BS2B1316	1-3/16"	1-1/4"	1-3/4"	4-1/8"	3"
	BS2B1716	1-7/16"	1-3/8"	2"	4-7/8"	3-1/2"
	BS2B11516	1-15/16"	1-3/4"	2-1/2"	6"	4"
	BS2B2316	2-3/16"	1-7/8"	2-3/4"	6-1/2"	4-3/8"
	BS2B2716	2-7/16"	2-1/8"	3"	7"	5"
	BS2B21516	2-15/16"	2-1/2"	3-1/2"	8-1/2"	5-3/4"



4 Bolt	BS4B11516	1-15/16"	1-3/4"	3-1/2"	6-1/2"	4-1/4"
	BS4B2316	2-3/16"	1-7/8"	3-1/2"	6-3/4"	4-5/8"
	BS4B2716	2-7/16"	2-1/8"	4"	8"	5"
	BS4B21516	2-15/16"	2-1/2"	4-1/2"	8-3/4"	5-3/4"
	BS4B3716	3-7/16"	3-1/4"	5"	10-1/2"	7-1/4"
	BS4B31516	3-15/16"	3-1/2"	5-1/2"	12"	7-3/4"
	BS4B4716	4-7/16"	4-1/8"	6-1/4"	13-1/2"	9"
	BS4B41516	4-15/16"	4-1/2"	7"	14-3/4"	9-3/4"



Note: Other sizes available upon request.

STYLE AND MATERIAL CHART:	
UH	UHMW
NY	Nylon
UR	Urethane

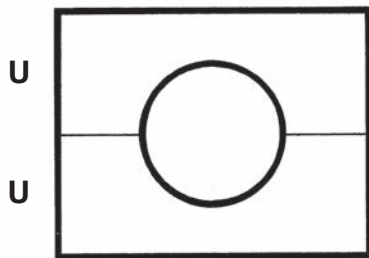
SPLIT TIPPLE BEARING

Molded UHMW split tipple bearings are simply a cost effective, maintenance free, and low friction bearing with split design for easy installation.

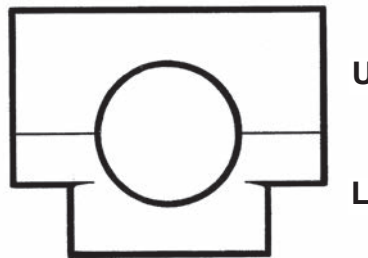


Part No.	Style	H	W	LTB	Bore	Bolt C-C	Bolt Size
TB 115	A, B	4"	5"	1 1/2"	1 15/16"	4"	1/2"
TB 207	A, B	4"	5"	1 1/2"	2 3/8"	4"	1/2"
TB 207X1	A	3 1/4"	4 3/4"	1 1/2"	2 3/8"	3 3/8"	1/2"

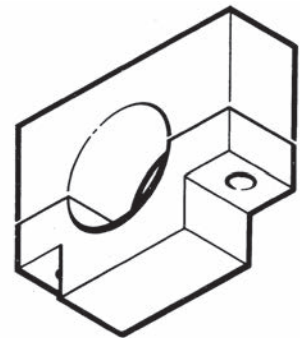
Note: Parts are ordered in halves. U or L are added to the part no. to designate whether upper halves or lower halves are ordered.



Style (A)

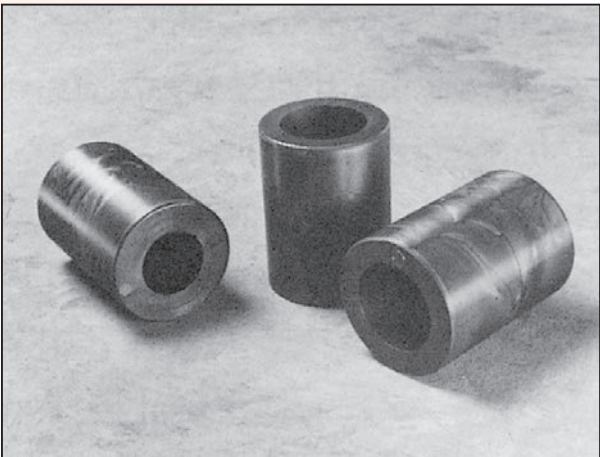
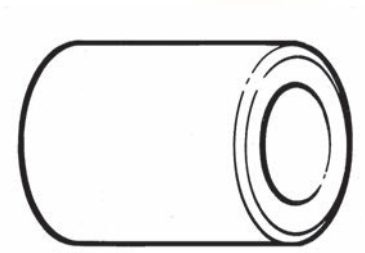


Style (B)



KILN CART BUSHINGS

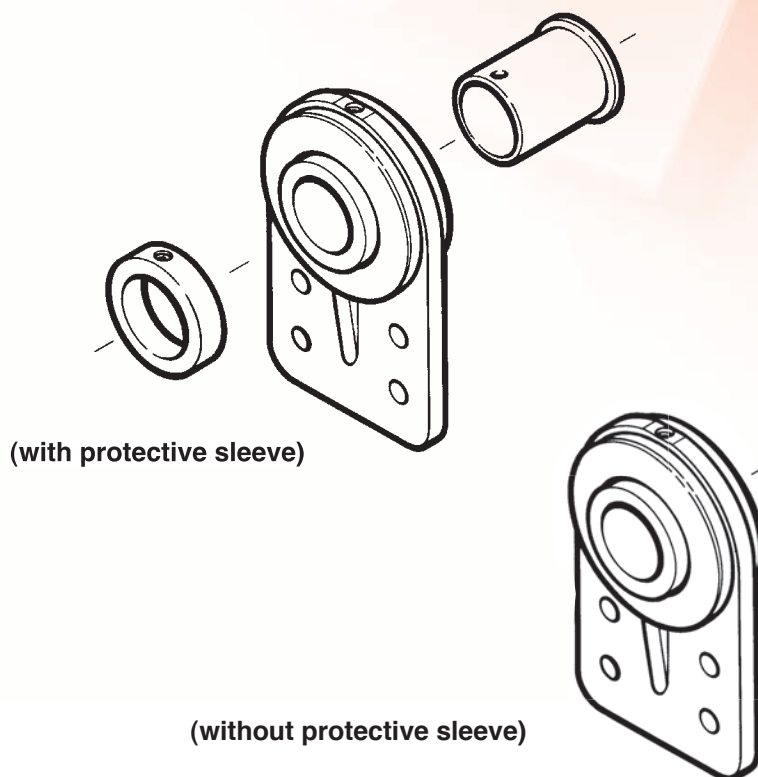
Our bushings are in kiln applications throughout the sawmill industry. We injection mold and machine from HT Nylon, a high-temperature, high-load resin that is self-lubricating – for long bushing life in a 250° F. operating environment where normal lubricants would melt or oxidize. All bushings are bored with thermal expansion tolerance.



Part No.	Outside Dia.	Inside Dia.	Length Overall
KS1	2-1/4"	1-1/8"	3"
KS2	2-1/4"	1-7/16"	3"
KS3	2-1/4"	1-1/2"	3"
KL1	2-1/4"	1-1/8"	3-1/4"
KL2	2-1/4"	1-7/16"	3-1/4"
KL3	2-1/4"	1-1/2"	3-1/4"
KMS1	2-3/8"	1-1/8"	3"
KMS2	2-3/8"	1-7/16"	3"
KMS3	2-3/8"	1-1/2"	3"
KML1	2-3/8"	1-1/8"	3-1/4"
KML2	2-3/8"	1-7/16"	3-1/4"
KML3	2-3/8"	1-1/2"	3-1/4"

Note: Other sizes available upon request.

DRYER HANGER BEARING



FEATURES:

- Sleeve or self-aligning
- No lubrication
- Replaceable inserts
- Up to 250° operating temperature
- No corrosion
- With or without locking shaft protection assembly

APPLICATIONS:

- COE dryer/infeed/outfeed
- Moore dryer/infeed/outfeed
- Veneer
- Gypsum

SIZES:

- 1 1/4" Bore or 1 1/2"

PART No.:

- IDBS

MATERIALS:

- Glass filled nylon housing
- UHMW and HT nylon bushings

HANGER BEARINGS

Hanger bearings made from engineered plastics offer a number of problem solving advantages over their metal counterparts. Features such as self-lubrication, enhanced abrasion resistance, and shock absorption are among the many advantages. Listed below are some of the many sizes and materials we offer.

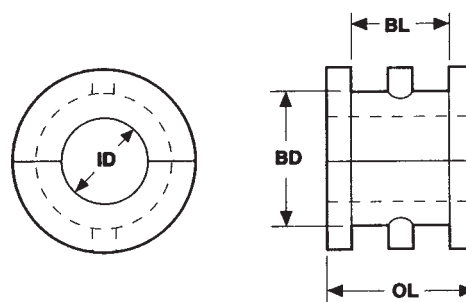
Materials Available

Natural UHMW P.E.
Natural Nylon
Moly-Filled Nylon
Oil-Filled Nylon
Polyurethane

Hanger Bearings for Screw Conveyors - Type 226

Shaft Size (ID)	BD	BL	OL
1	1-1/2	1-1/16	1-7/16
1-1/2	2-1/8	1-9/16	1-15/16
2	2-3/4	1-9/16	1-15/16
2-7/16	3-1/4	2-3/8	2-15/16
3	4	2-3/8	2-15/16
3-7/16	4-3/4	3-1/8	3-15/16

Type 226, fits hanger styles, 226, 220, 326, 20B, 26B.

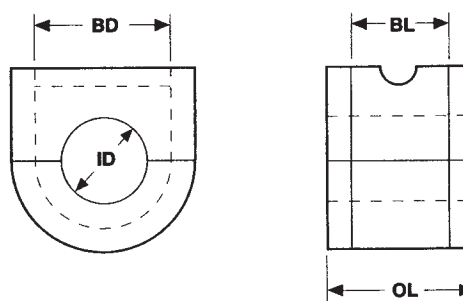


Hanger Bearing for Screw Conveyors - Type 226

Hanger Bearings for Screw Conveyors - Type 230

Shaft Size (ID)	BD	BL	OL
1-1/2	2-1/4	1-3/8	1-15/16
2	3-1/4	1-5/8	1-15/16
2-7/16	4	1-5/8	2-15/16
3	4-1/2	2-1/8	2-15/16
3-7/16	4-7/8	2-11/16	3-15/16

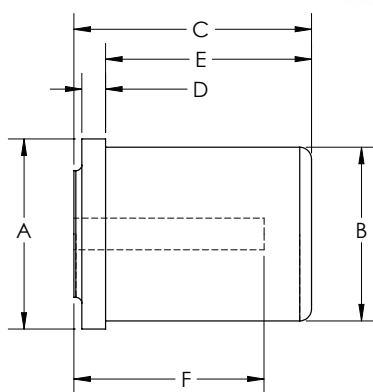
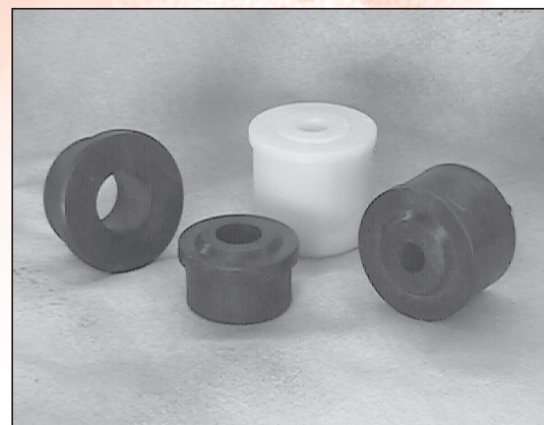
Type 230, fits hanger styles 230, 216, 316, 16B, 216F.



Hanger Bearing for Screw Conveyors - Type 230

ROLL END BEARINGS

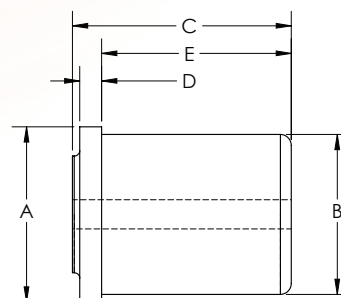
UHMW roll end bearings are used widely in a variety of industries and applications. Self lubrication, impact and chemical resistance are just some of the features of the bearing. Used with pvc, steel or stainless steel tubing, these bearings provide simple, quiet, and reliable conveying.



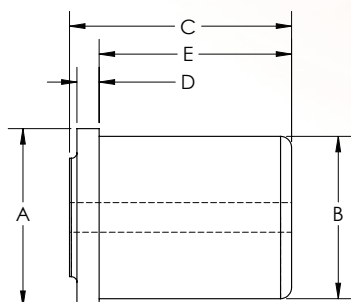
Part No.	A Tubing OD	Tubing Gauge (in.)	Tubing Wall	B Tubing ID	C Length	D	E	F Hole Depth
EP2101	1-1/2	16	.065	1.370	1-7/8	3/16	1-5/8	1-1/2
EP2102	1-1/2	14	.083	1.334	1-7/8	3/16	1-5/8	1-1/2
EP2105	1-3/4	16	.065	1.620	1-7/8	3/16	1-5/8	1-1/2
EP2110	1.900	1-1/2 pipe SCH.40	.145	1.610	1-7/8	3/16	1-5/8	1-1/2
EP2115	1.900 1.900	1-1/2 pipe SCH.80	.200	1.500	1-7/8	3/16	1-5/8	1-1/2
EP2120	2	18	.049	1.902	1-7/8	5/16	1-1/2	1-1/2
EP2121	2	16	.065	1.870	1-7/8	5/16	1-1/2	1-1/2
EP2122	2	14	.083	1.834	1-7/8	5/16	1-1/2	1-1/2
EP2205	2-3/8	16	.065	2.245	1-7/8	5/16	1-1/2	1-1/2
EP2210	2-3/8	2 pipe SCH.40	.154	2.067	1-7/8	5/16	1-1/2	1-1/2
EP2125	2-3/8	2 pipe SCH.80	.218	1.939	1-7/8	5/16	1-1/2	1-1/2
EP2211	2-1/2	18	.049	2.402	1-7/8	5/16	1-1/2	1-1/2
EP2212	2-1/2	16	.065	2.370	1-7/8	5/16	1-1/2	1-1/2
EP2213	2-1/2	14	.083	2.334	1-7/8	5/16	1-1/2	1-1/2
EP2214	2-1/2	11	.120	2.260	1-7/8	5/16	1-1/2	1-1/2
EP2215	2-3/4	16	.065	2.620	1-7/8	5/16	1-1/2	1-1/2

ROLL END BEARINGS

Part No.	A Tubing OD	Tubing Gauge (in.)	Tubing Wall	B Tubing ID	C	D	E
EP0101	1-3/8	18	.049	1.277	1-1/4	3/16	1
EP0102	1-3/8	16	.065	1.245	1-1/4	3/16	1
EP0105	1-1/2	18	.049	1.402	1-1/2	3/16	1-1/4
EP0106	1-1/2	16	.065	1.370	1-1/2	3/16	1-1/4
EP0107	1-1/2	14	.083	1.334	1-1/2	3/16	1-1/4
EP0110	1.510	1-1/4 EMT	.065	1.380	1-1/2	3/16	1-1/4
EP0115	1-5/8	16	.065	1.495	1-1/2	3/16	1-1/4
EP0116	1-5/8	11	.120	1.385	1-1/2	3/16	1-1/4
EP0120	1.660	1-1/4 PIPE SCH. 40	.140	1.380	1-1/2	3/16	1-1/4
EP0125	1.740	1-1/2 EMT	.065	1.610	1-1/2	3/16	1-1/4
EP0130	1-3/4	16	.065	1.620	1-1/2	3/16	1-1/4
EP0132	1-3/4	13	.095	1.560	1-1/2	3/16	1-1/4
EP0133	1-3/4	11	.120	1.510	1-1/2	3/16	1-1/4
EP0135	1-7/8	16	.065	1.745	1-1/2	3/16	1-1/4
EP0136	1-7/8	13	.095	1.685	1-1/2	3/16	1-1/4
EP0140	1.900	1-1/2 PIPE SCH. 40	.145	1.610	1-1/2	3/16	1-1/4
EP0145	1.900	1-1/2 PIPE SCH. 80	.200	1.500	1-1/2	3/16	1-1/4
EP0150	1.900	16	.065	1.770	1-1/2	3/16	1-1/4
EP0155	2	18	.049	12.902	1-5/8	5/16	1-1/4
EP0156	2	16	.065	1.870	1-5/8	5/16	1-1/4
EP0157	2	14	.083	1.834	1-5/8	5/16	1-1/4
EP0158	2	13	.095	1.810	1-5/8	5/16	1-1/4
EP0159	2	11	.120	1.760	1-5/8	5/16	1-1/4
EP0201	2.197	2 EMT	.065	2.065	1-5/8	5/16	1-1/4
EP0202	2-1/4	18	.049	2.152	1-5/8	5/16	1-1/4
EP0203	2-1/4	16	.065	2.120	1-5/8	5/16	1-1/4
EP0204	2-1/4	14	.083	2.084	1-5/8	5/16	1-1/4
EP0205	2-1/4	13	.095	2.060	1-5/8	5/16	1-1/4
EP0206	2-1/4	11	.120	2.010	1-5/8	5/16	1-1/4
EP0160	2-1/4	10	.134	1.982	1-5/8	5/16	1-1/4
EP0210	2-3/8	16	.065	2.245	1-5/8	5/16	1-1/4
EP0212	2-3/8	11	.120	2.135	1-5/8	5/16	1-1/4
EP0215	2.375	2 PIPE SCH. 40	.154	2.067	1-5/8	5/16	1-1/4
EP0165	2.375	2 PIPE SCH. 80	.218	1.955	1-5/8	1/4	1-3/8
EP0225	2-1/2	16	.065	2.370	1-5/8	5/16	1-1/4
EP0226	2-1/2	14	.083	2.334	1-5/8	5/16	1-1/4
EP0227	2-1/2	13	.095	2.310	1-5/8	5/16	1-1/4
EP0228	2-1/2	11	.120	2.260	1-5/8	5/16	1-1/4
EP0230	2-3/4	16	.065	2.620	1-5/8	5/16	1-1/4
EP0232	2-3/4	11	.120	2.510	1-5/8	5/16	1-1/4
EP0235	2.875	2-1/2 PIPE SCH. 40	.203	2.469	1-5/8	5/16	1-1/4
EP0236	2.875	2-1/2 PIPE SCH. 80	.276	2.323	1-5/8	5/16	1-1/4
EP0240	3	16	.065	2.870	1-3/4	5/16	1-3/8
EP0242	3	13	.095	2.810	1-3/4	5/16	1-3/8
EP0243	3	11	.120	2.760	1-3/4	5/16	1-3/8
EP0301	3-1/4	16	.065	3.120	1-3/4	5/16	1-3/8
EP0302	3-1/4	13	.095	3.060	1-3/4	5/16	1-3/8
EP0304	3-1/2	13	.095	3.310	1-3/4	5/16	1-3/8
EP0305	3-1/2	11	.120	3.260	1-3/4	5/16	1-3/8
EP0306	3.500	3 PIPE SCH. 40	.216	3.068	1-3/4	5/16	1-3/8
EP0245	3.500	3 PIPE SCH. 80	.300	2.900	1-3/4	5/16	1-3/8
EP0310	3-3/4	16	.065	3.620	1-3/4	5/16	1-3/8
EP0315	4	16	.065	3.870	1-3/4	5/16	1-3/8
EP0316	4	14	.083	3.834	1-3/4	5/16	1-3/8
EP0320	4	3-1/2 PIPE SCH. 40	.226	3.548	1-3/4	5/16	1-3/8



ROLL END BEARINGS



Part No.	A Tubing OD	Tubing Gauge (in.)	Tubing Wall	B Tubing ID	C	D	E
EP1001	1/2	20	.035	.430	1/2	3/16	5/16
EP1002	1/2	18	.049	.402	1/2	3/16	5/16
EP1005	5/8	20	.035	.555	1/2	3/16	5/16
EP1010	.706	1/2 EMT	.042	.622	11/16	1/8	1/2
EP1015	3/4	20	.035	.680	11/16	1/8	1/2
EP1016	3/4	18	.049	.652	11/16	1/8	1/2
EP1017	3/4	16	.065	.620	11/16	1/8	1/2
EP1020	7/8	20	.035	.805	11/16	1/8	1/2
EP1022	7/8	16	.065	.745	11/16	1/8	1/2
EP1025	.922	3/4 EMT	.049	.824	11/16	1/8	1/2
EP1030	1.000	20	.035	.930	11/16	1/8	1/2
EP1031	1.000	18	.049	.902	11/16	1/8	1/2
EP1032	1.000	17	.058	.884	11/16	1/8	1/2
EP1033	1.000	16	.065	.870	11/16	1/8	1/2
EP1035	1.050	3/4 PIPE SCH. 40	.113	.824	11/16	1/8	1/2
EP1101	1-1/8	17	.058	1.009	11/16	1/8	1/2
EP1041	1-1/8	16	.065	.995	11/16	1/8	1/2
EP1102	1.163	1 EMT	.057	1.049	11/16	1/8	1/2
EP1105	1-1/4	20	.035	1.180	3/4	1/8	9/16
EP1106	1-1/4	18	.049	1.152	3/4	1/8	9/16
EP1110	1.315	1 PIPE SCH. 40	.133	1.049	3/4	1/8	9/16
EP1115	1-3/8	18	.049	1.277	3/4	1/8	9/16
EP1116	1-3/8	16	.065	1.245	3/4	1/8	9/16
EP1120	1-1/2	20	.035	1.430	1	3/16	3/4
EP1122	1-1/2	16	.065	1.370	1	3/16	3/4
EP1125	1.510	1-1/4 EMT	.065	1.380	1	3/16	3/4
EP1130	1-5/8	20	.035	1.555	1	3/16	3/4
EP1131	1-5/8	18	.049	1.527	1	3/16	3/4
EP1132	1-5/8	16	.065	1.495	1	3/16	3/4
EP1135	1.740	1-1/2 EMT	.065	1.610	1	3/16	3/4
EP1140	1-3/4	20	.035	1.680	1	3/16	3/4
EP1142	1-3/4	16	.065	1.620	1	3/16	3/4
EP1145	1-7/8	20	.035	1.805	1	3/16	3/4
EP1146	1-7/8	18	.049	1.777	1	13/16	3/4
EP1147	1-7/8	16	.065	1.745	1	3/16	3/4
EP1150	1.900	1-1/2 PIPE SCH. 40	.145	1.610	1	3/16	3/4
EP1155	1.900	1-1/2 PIPE SCH. 80	.200	1.500	1	3/16	3/4
EP1160	1.900	16	.065	1.770	1	3/16	3/4
EP1165	2.000	20	.035	1.930	1	3/16	3/4
EP1166	2.000	18	.049	1.902	1	3/16	3/4
EP1167	2.000	16	.065	1.870	1	3/16	3/4
EP1201	2.197	2 EMT	.065	2.067	1	3/16	3/4
EP1205	2-1/4	20	.035	2.180	1	3/16	3/4
EP1206	2-1/4	18	.049	2.152	1	3/16	3/4
EP1207	2-1/4	16	.065	2.120	1	3/16	3/4
EP1210	2-1/2	20	.035	2.430	1	3/16	3/4
EP1211	2-1/2	18	.049	2.402	1	3/16	3/4
EP1212	2-1/2	16	.065	2.370	1	3/16	3/4

DRIVE COMPONENTS

SPROCKETS



**DIVERSIFIED
PLASTICS, INC.**

Engineered plastics designed for the way you do business.

PLASTIC ROLLER CHAIN

Plastic chains were developed primarily for low-power transmission applications. The chains can be used with steel sprockets or plastic sprockets, and for a wide range of speeds.

These drive components can be especially useful in harsh chemical, moisture and temperature environments. The chains can incorporate additives for self-lubrication, also usable where cleanliness is important, as in food-processing or computer equipment.

Chains are made with links that snap together so that each link in effect becomes a master link. Various attachments can be used with plastic chains and sprockets. These attachments can be fastened to the chain or sprocket or molded integrally.

Plastic chains are available as off the shelf items in 1/4-in., 3/8-in. and 1/2-in. pitches. Non-standard sizes and shapes including chain with various types of attachments have been developed for special applications.

Plastic chains and sprockets are generally about one-fifth to one-tenth as heavy as equivalent metal components. They are relatively quiet and are non-conductive and nonmagnetic.

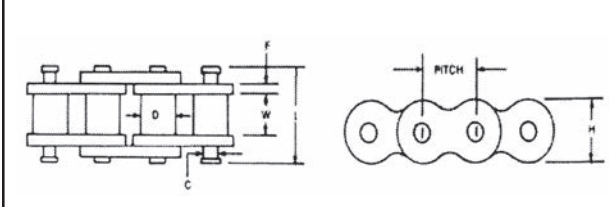
GENERAL CHARACTERISTICS

Horsepower ratings have not been determined for all sizes of plastic chains. However, the chain performance data chart shows the results for breaking strength of the representative chain sizes. Working strength is often figured as 1/3 of the average breaking strength.

Elongations vs. time tests have shown that the major portion of elongation or stretch occurs almost immediately after the load is applied; 90 percent of elongation takes place within the first 15 minutes of operation. Based on total length, subsequent elongation is less than 0.3 percent. When the load is removed, the chain recovers as a function of time and material. In general, maximum recovery is achieved within 30 minutes of load removal.

PRODUCT DESIGN

Plastic chain is produced in three standard pitch sizes, 1/4, 3/8 and 1/2 inch. Key roller and linkage dimensions can be seen below. Specialty pitch designs available.

		Cat. No.	Pitch	Dimensions					
				W	D	C	F	L	H
		#25	1/4	1/8	.130	.105	.040	.359	.25
		#35	3/8	3/16	.200	.141	.075	.545	.35
		#40	1/2	5/16	.312	.156	.088	.725	.46

PLASTIC ROLLER CHAIN

MATERIAL DATA

In order to meet the range of strength, chemical and heat resistance requirements of the marketplace, Diversified Plastic offers chains and sprockets molded from four standard materials: polypropylene, acetal, Kynar® PVDF and moly-filled nylon. Performance data on the base polymer products described below should be used in the selection of the specific material for the application involved.

1

	Moly-filled nylon	Acetal	Polypropylene	Kynar® PVDF
Strength:				
Tensile (PSI)	13,700	9,700	4,500	4,500
Compressive (PSI)	12,500	15,600	5,500	8,000
Flexural (PSI)	17,000	13,600	6,000	8,600
Elongation %	15	13	100	8
Water Absorption %				
24 hrs. 1/8" thick	0.8	0.25	0.01	0.05
Heat Deflection Temp. @264 PSI, of	183	255	120	183
Resistance: Effect Of				
Weak Acids	resistant	resistant	none	very resistant
Strong Acids	attacked	some	attacked slowly by oxidizing acids	very resistant
Weak Alkalies	none	resistant	none	very resistant
Strong Alkalies	resistant	resistant	very resistant	attacked
Organic Solvent	resistant to common solvents	resistant to most	resistant below 80°C	resistant to most

Note¹: All values are typical for material and should only be used as a guide in selecting appropriate material. Application testing is strongly recommended.

CHAIN PERFORMANCE DATA

2

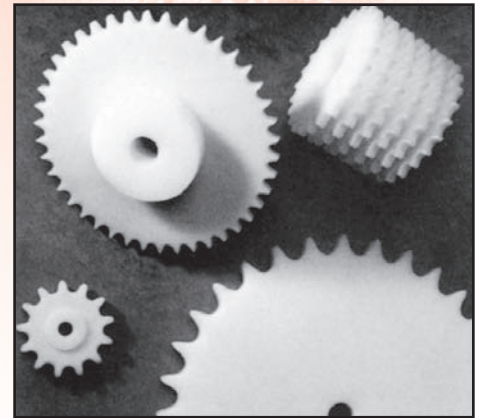
	#25 Chain				#35 Chain				#40 Chain			
	25A	25PP	25M	25K	35A	35PP	35M	35K	40A	40PP	40M	40K
Tensile Strength @ Break	63	29	65	56	136	66	136	109	175	89	173	141
Elongation % Ultimate	9	11	34	13	6	10	11	8	4	8	9	7
@ 75% Tensile Strength	5	6	14	7	5	5	9	5	3	4	7	4
Elongation Recovery %												
@ Removal of Load	88	72	69	76	88	80	73	84	86	77	73	84
After 10 Minutes	93	91	84	90	95	92	87	94	91	87	87	93
After 30 Minutes	98	95	87	92	95	94	91	94	95	92	88	95

Note²: All values are typical for material and should only be used as a guide in selecting appropriate material. Application testing is strongly recommended.

Note²: A-Acetal; PP - Polypropylene; M-Moly-filled nylon; K-Kynar®

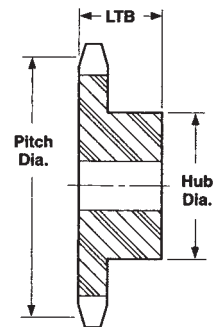
ROLLER CHAIN SPROCKETS

Plastic roller chain sprockets are chemical resistant, do not require lubrication, and reduce shock to provide smoother, quieter operation.



No. 35 3/8" Pitch

Part No.	No. Teeth	Pitch Dia.	Bore (in.) Stock	LTB
DPRC3508	8	.980	1/4	.668
DPRC3509	9	1.096	3/8	3/4
DPRC3510	10	1.214	3/8	3/4
DPRC3511	11	1.331	3/8	3/4
DPRC3512	12	1.449	1/2	3/4
DPRC3513	13	1.567	1/4	.668
DPRC3514	14	1.685	1/2	3/4
DPRC3515	15	1.804	1/2	3/4
DPRC3516	16	1.922	1/2	3/4
DPRC3517	17	2.041	1/2	3/4
DPRC3518	18	2.160	1/2	3/4
DPRC3519	19	2.278	1/2	3/4
DPRC3520	20	2.397	1/2	7/8
DPRC3521	21	2.516	1/2	3/4
DPRC3522	22	2.635	1/2	3/4
DPRC3523	23	2.754	1/2	3/4
DPRC3524	24	2.873	1/2	7/8
DPRC3525	25	2.992	1/2	3/4
DPRC3526	26	3.111	1/2	7/8
DPRC3527	27	3.230	1/2	3/4
DPRC3528	28	3.349	1/2	3/4
DPRC3529	29	3.468	1/2	3/4
DPRC3530	30	3.588	1/2	7/8
DPRC3531	31	3.707	1/2	3/4
DPRC3532	32	3.826	1/2	7/8
DPRC3533	33	3.945	1/2	7/8
DPRC3534	34	4.064	1/2	7/8
DPRC3535	35	4.183	1/2	7/8
DPRC3536	36	4.303	5/8	7/8
DPRC3537	37	4.422	1/2	7/8
DPRC3538	38	4.541	1/2	7/8
DPRC3539	39	4.660	1/2	7/8
DPRC3540	40	4.780	5/8	7/8
DPRC3541	41	4.899	1/2	7/8
DPRC3542	42	5.018	1/2	7/8
DPRC3543	43	5.137	1/2	7/8
DPRC3544	44	5.257	1/2	7/8
DPRC3545	45	5.376	5/8	1
DPRC3546	46	5.495	1/2	7/8
DPRC3547	47	5.614	1/2	7/8
DPRC3548	48	5.734	1/2	7/8



Single Type B Hub

Materials Available

UHMW P.E.
Nylon
Moly-Filled Nylon
Oil-Filled Nylon
Polyurethane
Laminate
Acetal
*Other material available upon request

Styles Available

A – A Plate
B – B Style, hub on one side
C – C Style, hub on both sides
D – Drive Sprocket
S – Split
X – Special

ROLLER CHAIN SPROCKETS

Plastic roller chain sprockets are chemical resistant, do not require lubrication, and reduce shock to provide smoother, quieter operation.

Materials Available

UHMW P.E.
Nylon
Moly-Filled Nylon
Oil-Filled Nylon
Polyurethane
Laminate
Acetal
*Other material available upon request

No. 40 1/2" Pitch

Part No.	No. Teeth	Pitch Dia.	Bore (in.) Stock	LTB
DPRC4008	8	1.307	1/2	7/8
DPRC4009	9	1.462	1/2	7/8
DPRC4010	10	1.618	1/2	7/8
DPRC4011	11	1.775	1/2	7/8
DPRC4012	12	1.932	1/2	7/8
DPRC4013	13	2.089	1/2	7/8
DPRC4014	14	2.247	1/2	7/8
DPRC4015	15	2.405	1/2	7/8
DPRC4016	16	2.563	1/2	7/8
DPRC4017	17	2.721	1/2	1
DPRC4018	18	2.879	1/2	1
DPRC4019	19	3.038	1/2	1
DPRC4020	20	3.196	1/2	1
DPRC4021	21	3.355	1/2	1
DPRC4022	22	3.513	1/2	1
DPRC4023	23	3.672	1/2	1
DPRC4024	24	3.831	1/2	1
DPRC4025	25	3.989	1/2	1
DPRC4026	26	4.148	1/2	1
DPRC4027	27	4.307	1/2	1
DPRC4028	28	4.466	1/2	1
DPRC4029	29	4.625	1/2	1
DPRC4030	30	4.783	1/2	1
DPRC4031	31	4.942	1/2	1
DPRC4032	32	5.101	1/2	1
DPRC4033	33	5.26	1/2	1
DPRC4034	34	5.419	1/2	1
DPRC4035	35	5.578	1/2	1
DPRC4036	36	5.737	1/2	1
DPRC4037	37	5.896	1/2	1
DPRC4038	38	6.055	1/2	1
DPRC4039	39	6.214	1	1
DPRC4040	40	6.373	1	1-1/8
DPRC4041	41	6.532	1	1-1/8
DPRC4042	42	6.691	1	1-1/8
DPRC4043	43	6.85	1	1-1/8
DPRC4044	44	7.009	1	1-1/8
DPRC4045	45	7.168	1	1-1/8
DPRC4046	46	7.327	1	1-1/8
DPRC4047	47	7.486	1	1-1/8
DPRC4048	48	7.645	1	1-1/8

No. 50 5/8" Pitch

Part No.	No. Teeth	Pitch Dia.	Bore (in.) Stock	LTB
DPRC5009	9	1.827	1/2	1
DPRC5010	10	2.023	1/2	1
DPRC5011	11	2.218	1/2	1
DPRC5012	12	2.415	1/2	1
DPRC5013	13	2.612	1/2	1
DPRC5014	14	2.803	1/2	1
DPRC5015	15	3.006	1/2	1
DPRC5016	16	3.204	1/2	1
DPRC5017	17	3.401	1/2	1
DPRC5018	18	3.599	1/2	1
DPRC5019	19	3.797	1/2	1
DPRC5020	20	3.995	1/2	1
DPRC5021	21	4.193	1/2	1
DPRC5022	22	4.392	1/2	1
DPRC5023	23	4.59	1/2	1
DPRC5024	24	4.788	1/2	1-1/4
DPRC5025	25	4.987	1/2	1-1/4
DPRC5026	26	5.185	1/2	1-1/4
DPRC5027	27	5.384	1/2	1-1/4
DPRC5028	28	5.582	1/2	1-1/4
DPRC5029	29	5.781	1/2	1-1/4
DPRC5030	30	5.979	1/2	1-1/4
DPRC5031	31	6.178	1/2	1-1/4
DPRC5032	32	6.376	1/2	1-1/4
DPRC5033	33	6.575	1/2	1-1/4
DPRC5034	34	6.774	1/2	1-1/4
DPRC5035	35	6.972	1/2	1-1/4
DPRC5036	36	7.171	1/2	1-1/4
DPRC5037	37	7.37	1/2	1-1/4
DPRC5038	38	7.568	1/2	1-1/4
DPRC5039	39	7.767	1/2	1-1/4
DPRC5040	40	7.966	3/4	1-1/4
DPRC5041	41	8.165	3/4	1-1/4
DPRC5042	42	8.363	3/4	1-1/4
DPRC5043	43	8.562	3/4	1-1/4
DPRC5044	44	8.761	3/4	1-1/4
DPRC5045	45	8.96	3/4	1-1/4
DPRC5046	46	9.159	3/4	1-1/4
DPRC5047	47	9.357	3/4	1-1/4
DPRC5048	48	9.556	3/4	1-1/4

ROLLER CHAIN SPROCKETS

No. 60 3/4" Pitch

Part No.	No. Teeth	Pitch Dia.	Bore (in.) Stock	LTB
DPRC6008	8	1.960	1/2	1-1/4
DPRC6009	9	2.193	1/2	1-1/4
DPRC6010	10	2.427	1/2	1-1/4
DPRC6011	11	2.662	3/4	1-1/4
DPRC6012	12	2.898	3/4	1-1/4
DPRC6013	13	3.134	3/4	1-1/4
DPRC6014	14	3.370	3/4	1-1/4
DPRC6015	15	3.607	3/4	1-1/4
DPRC6016	16	3.844	3/4	1-1/4
DPRC6017	17	4.082	1	1-1/4
DPRC6018	18	4.319	1	1-1/4
DPRC6019	19	4.557	1	1-1/4
DPRC6020	20	4.794	1	1-1/4
DPRC6021	21	5.032	1	1-1/4
DPRC6022	22	5.270	1	1-1/4
DPRC6023	23	5.508	1	1-1/4
DPRC6024	24	5.746	1	1-1/4
DPRC6025	25	5.984	1	1-1/4
DPRC6026	26	6.222	1	1-1/4
DPRC6027	27	6.460	1	1-1/4
DPRC6028	28	6.699	1	1-1/4
DPRC6029	29	6.937	1	1-1/4
DPRC6030	30	7.175	1	1-1/4
DPRC6031	31	7.413	1	1-1/4
DPRC6032	32	7.652	1	1-1/4
DPRC6033	33	7.890	1	1-1/4
DPRC6034	34	8.128	1	1-1/4
DPRC6035	35	8.367	1	1-1/4
DPRC6036	36	8.605	1	1-1/4
DPRC6037	37	8.844	1	1-1/4
DPRC6038	38	9.082	1	1-1/4
DPRC6039	39	9.321	1	1-1/4
DPRC6040	40	9.559	1	1-1/4
DPRC6041	41	9.798	1	1-1/4
DPRC6042	42	10.036	1	1-1/4
DPRC6043	43	10.275	1	1-1/4
DPRC6044	44	10.513	1	1-1/4
DPRC6045	45	10.752	1	1-1/4
DPRC6046	46	10.990	1	1-1/4
DPRC6047	47	11.229	1	1-1/4
DPRC6048	48	11.467	1	1-1/4
DPRC6049	49	11.706	1	1-1/4
DPRC6050	50	11.944	1	1-1/4

No. 80 1" Pitch

Part No.	No. Teeth	Pitch Dia.	Bore (in.) Stock	LTB
DPRC8008	8	2.613	3/4	1-1/2
DPRC8009	9	2.924	3/4	1-1/2
DPRC8010	10	3.236	3/4	1-1/2
DPRC8011	11	3.549	3/4	1-1/2
DPRC8012	12	3.864	3/4	1-1/2
DPRC8013	13	4.179	1	1-1/2
DPRC8014	14	4.494	1	1-1/2
DPRC8015	15	4.810	1	1-1/2
DPRC8016	16	5.126	1	1-1/2
DPRC8017	17	5.442	1	1-1/2
DPRC8018	18	5.759	1	1-1/2
DPRC8019	19	6.076	1	1-1/2
DPRC8020	20	6.392	1	1-1/2
DPRC8021	21	6.710	1	1-3/4
DPRC8022	22	7.027	1	1-3/4
DPRC8023	23	7.344	1	1-3/4
DPRC8024	24	7.661	1	1-3/4
DPRC8025	25	7.979	1	1-3/4
DPRC8026	26	8.296	1	2
DPRC8027	27	8.614	1	2
DPRC8028	28	8.931	1	2
DPRC8029	29	9.249	1	2
DPRC8030	30	9.567	1	2
DPRC8031	31	9.885	1	2
DPRC8032	32	10.202	1	2
DPRC8033	33	10.520	1	2
DPRC8034	34	10.838	1	2
DPRC8035	35	11.156	1	2
DPRC8036	36	11.474	1	2
DPRC8037	37	11.792	1	2
DPRC8038	38	12.11	1	2
DPRC8039	39	12.428	1	2
DPRC8040	40	12.746	1	2
DPRC8041	41	13.063	1	2
DPRC8042	42	13.382	1	2
DPRC8043	43	13.700	1	2
DPRC8044	44	14.018	1	2
DPRC8045	45	14.336	1	2
DPRC8046	46	14.654	1	2
DPRC8047	47	14.972	1	2
DPRC8048	48	15.290	1	2
DPRC8049	49	15.608	1	2
DPRC8050	50	15.926	1	2

ROLLER CHAIN SPROCKETS

No. 100 1-1/4" Pitch

Part No.	No. Teeth	Pitch Dia.	Bore (in.) Stock	LTB
DPRC9908	8	3.266	3/4	1-3/4
DPRC9909	9	3.655	3/4	1-3/4
DPRC9910	10	4.045	1	1-3/4
DPRC9911	11	4.437	1	1-3/4
DPRC9912	12	4.83	1	1-3/4
DPRC9913	13	5.223	1	1-3/4
DPRC9914	14	5.617	1	1-3/4
DPRC9915	15	6.012	1	1-3/4
DPRC9916	16	6.407	1	1-3/4
DPRC9917	17	6.803	1	1-3/4
DPRC9918	18	7.198	1	1-3/4
DPRC9919	19	7.594	1	2
DPRC9920	20	7.991	1	2
DPRC9921	21	8.387	1	2
DPRC9922	22	8.783	1/2	2
DPRC9923	23	9.18	1/2	2
DPRC9924	24	9.577	1/2	2
DPRC9925	25	9.973	1/2	2
DPRC9926	26	10.37	1/2	2
DPRC9927	27	10.767	1/2	2
DPRC9928	28	11.164	1/2	2
DPRC9929	29	11.561	1/2	2
DPRC9930	30	11.958	1/2	2
DPRC9931	31	12.356	1/2	2
DPRC9932	32	12.753	1/2	2
DPRC9933	33	13.15	1/2	2
DPRC9934	34	13.547	1/2	2
DPRC9935	35	13.945	1/2	2-1/2
DPRC9936	36	14.342	1	2-1/2
DPRC9937	37	14.74	1	2-1/2
DPRC9938	38	15.137	1	2-1/2
DPRC9939	39	15.534	1	2-1/2
DPRC9940	40	15.932	1	2-1/2
DPRC9941	41	16.329	1	2-1/2
DPRC9942	42	16.727	1	2-1/2
DPRC9943	43	17.124	1	2-1/2
DPRC9944	44	17.522	1	2-1/2
DPRC9945	45	17.919	1	2-1/2
DPRC9946	46	18.317	1	2-1/2
DPRC9947	47	18.715	1	2-1/2
DPRC9948	48	19.112	1	2-1/2
DPRC9949	49	19.51	1	2-1/2
DPRC9950	50	19.907	1	2-1/2

ROLLER CHAIN SPROCKETS

No. 120 1-1/2" Pitch

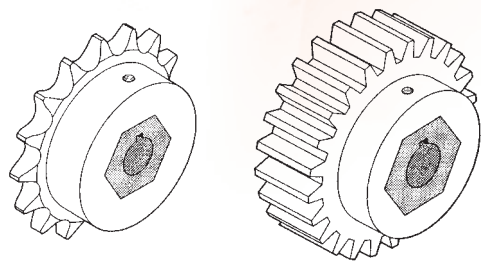
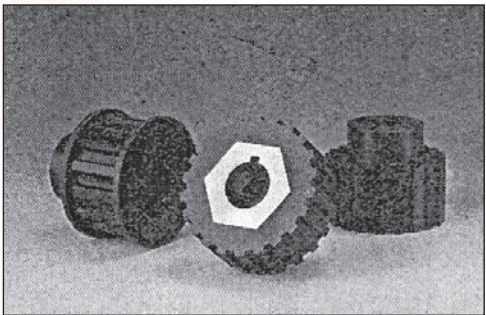
Part No.	No. Teeth	Pitch Dia.	Bore (in.) Stock	LTB
DPRC1211	11	5.324	1-1/2	2-1/8
DPRC1212	12	5.796	1-1/2	2-1/8
DPRC1213	13	6.268	1-1/2	2-1/4
DPRC1214	14	6.741	1-1/2	2-1/8
DPRC1215	15	7.215	1-1/2	2-3/8
DPRC1216	16	7.689	1-1/2	2-3/8
DPRC1217	17	8.163	1-1/2	2-3/8
DPRC1218	18	8.638	1-1/2	2-3/8
DPRC1219	19	9.113	1-1/2	2-3/8
DPRC1221	21	10.064	1-1/2	2-3/8
DPRC1226	26	12.444	1-1/2	2-3/8

No. 160 2" Pitch Taper-Lock Sprockets

Part No.	No. Teeth	Pitch Dia.	Bore (in.) Stock	LTB
DPRC1611	11	7.099	2-1/2	1-3/4
DPRC1612	12	7.727	3	2
DPRC1613	13	8.357	3	2
DPRC1614	14	8.988	3	2
DPRC1615	15	9.620	3-1/2	3-1/2
DPRC1616	16	10.252	3-1/2	3-1/2
DPRC1617	17	10.885	3-1/2	3-1/2
DPRC1618	18	11.518	3-1/2	3-1/2
DPRC1619	19	12.151	3-1/2	3-1/2
DPRC1621	21	13.419	3-1/2	3-1/2
DPRC1626	26	16.593	3-1/2	3-1/2
DPRC1635	35	22.313	4	4
DPRC1645	45	28.671	4	4
DPRC1660	60	38.215	4-1/2	4-1/2

SOLID TORQUE DRIVES™

Solid Torque™ drives are engineered to withstand loads that are typically too much for standard plastic sprockets, gears, and timing belt pulleys. Inserting a stainless steel hexagonal insert effectively increases the load rating of the unit by spreading the force of the torque over a much larger area.



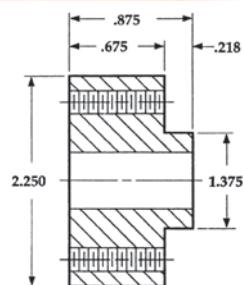
Minimum Hub Diameter	Bore Sizes (Includes keyway & set screw)
1-9/16"	3/8, 1/2, 5/8
2"	3/8, 1/2, 5/8, 3/4, 7/8
2-3/8"	3/8, 1/2, 5/8, 3/4, 7/8, 1
3"	3/8, 1/2, 5/8, 3/4, 7/8, 1, 1-1/4

DRIVE HUBS - ROLLER CHAIN SPROCKETS & GEARS

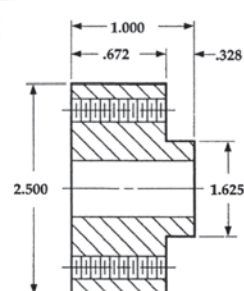
For use with type A-plate sprockets, gears and pulleys.

Bore	Catalog No.					
Round (inches)	DPS 10	DPS 12	DPS 15	DPS 17	DPS 22	DPS 27
1/2	X	X	X	X		
9/16	X	X	X	X		
5/8	X	X	X	X	X	
11/16	X	X	X	X	X	
3/4	X	X	X	X	X	
13/16	X	X	X	X	X	
7/8	X	X	X	X	X	
15/16	X	X	X	X	X	
1	X	X	X	X	X	X
1-1/16		X	X	X	X	X
1-1/8		X	X	X	X	X
1-3/16		X	X	X	X	X
1-1/4		X	X	X	X	X
1-5/16			X	X	X	X
1-3/8			X	X	X	X
1-7/16			X	X	X	X
1-1/2			X	X	X	X
1-9/16				X	X	X
1-5/8				X	X	X
1-11/16				X	X	X
1-3/4				X	X	X
1-13/16					X	X
1-7/8					X	X
1-15/16					X	X
2					X	X
2-1/16					X	X
2-1/8					X	X
2-3/16					X	X
2-1/4					X	X
2-5/16					X	X
2-3/8						X
2-7/16						X
2-1/2						X
2-9/16						X
2-5/8						X
2-11/16						X
2-3/4						X

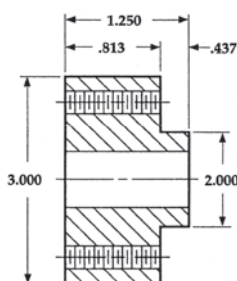
DPS 10 Hub



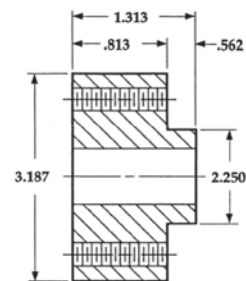
DPS 12 Hub



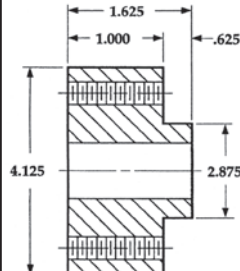
DPS 15 Hub



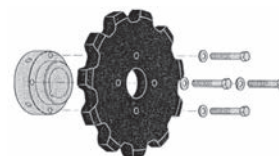
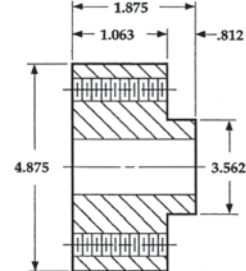
DPS 17 Hub



DPS 22 Hub

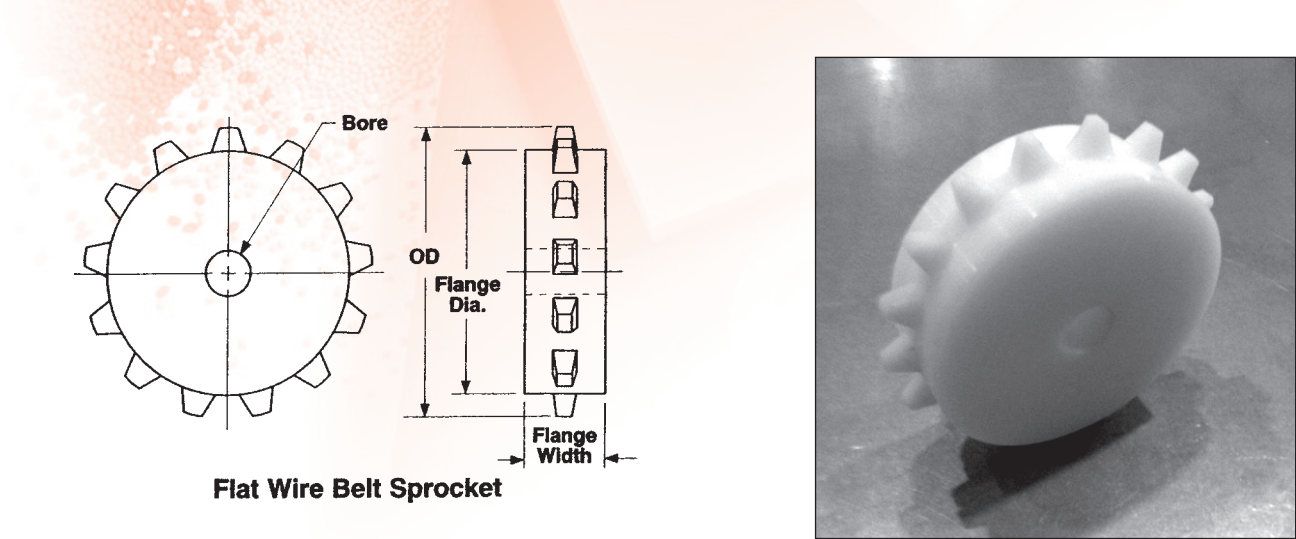


DPS 27 Hub



Metal hub and plastic A-plate sprocket assembly

FLAT WIRE BELT SPROCKETS



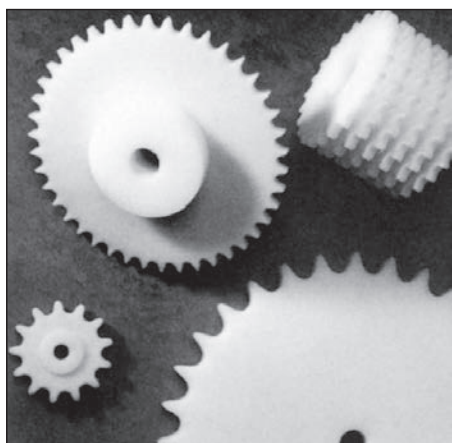
Flat Wire Belt Sprockets
For True 1/2" x 1/2" Standard Weight Belts
Material: TIVAR® 1000 **Color: White**

Part No.	No. of Teeth	Flange Dia.	O.D.	Flange Width	Stock Bore
SUHV5422	22	3.39	4.13	1-1/2	3/4
SUHV5438	38	6.17	6.89	1-1/2	3/4
SUHV5446	46	7.53	8.27	1-1/2	3/4
SUHV5462	62	10.31	11.05	1-1/2	1

Flat Wire Belt Sprockets
For 1/2" x 1" & 1" x 1" Heavy Weight Belts
Material: TIVAR® 1000 **Color: White**

Part No.	No. of Teeth	Flange Dia.	O.D.	Flange Width	Stock Bore
SUHV5213	13	4.00	4.95	2	3/4
SUHV5218	18	5.66	6.65	2	3/4
SUHV5223	23	7.39	8.39	2	1
SUHV5225	25	8.07	9.07	2	1
SUHV5231	31	10.16	11.16	2	1
SUHV5237	37	12.17	13.17	2	1

WIRE BELT SPROCKETS



Part No.	Pitch Dia.	Teeth	Length Thru Bore	Molded Acetal	Machined UHMW
B706	3.79"	6	.8"	X	X
B710	6.44"	10	.8"	X	X
B713	8.43"	13	.8"		X
B716	10.32"	16	.8"		X

Part No.	Pitch Dia.	Teeth	Length Thru Bore	Molded Acetal	Machined UHMW
B806	3.79"	6	.8"	X	X
B810	6.44"	10	.8"	X	X
B813	8.43"	13	.8"		X
B816	10.32"	16	.8"		X

Part No.	Pitch Dia.	Teeth	Length Thru Bore	Molded Acetal	Machined UHMW
B906	3.79"	6	.8"	X	X
B910	6.44"	10	.8"	X	X
B913	8.43"	13	.8"		X
B916	10.32"	16	.8"		X

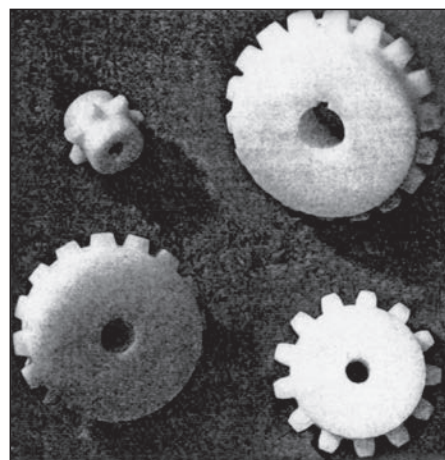
WIRE BELT SPROCKETS

Part No.	Hub Dia.	Teeth	Length Thru Bore	Molded UHMW	Machined UHMW
B1315	2.09"	15	2"		X
B1320	2.88"	20	2"		X
B1325	3.67"	25	2"		X
B1335	5.26"	35	2"		X
B1345	6.85"	45	2"		X

Part No.	Hub Dia.	Teeth	Length Thru Bore	Molded UHMW	Machined UHMW
B1407	1.89"	7	1 7/8	X	X
B1409	2.65"	9	1 7/8		X
B1413	3.90"	13	1 7/8		X
B1418	5.65"	18	1 7/8	X	X
B1423	7.42"	23	2"		X

Part No.	Hub Dia.	Teeth	Length Thru Bore	Molded UHMW	Machined UHMW
B1507	1.89"	7	1 7/8	X	X
B1509	2.65"	9	1 7/8		X
B1513	3.90"	13	1 7/8		X
B1518	5.65"	18	1 7/8	X	X
B1523	7.42"	23	2"		X

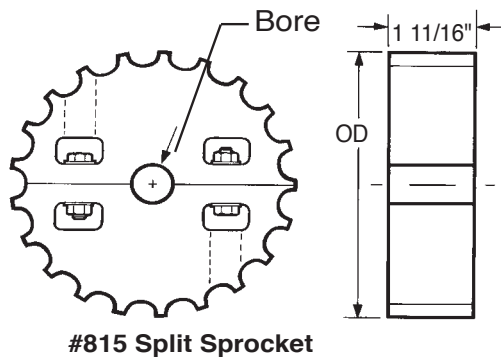
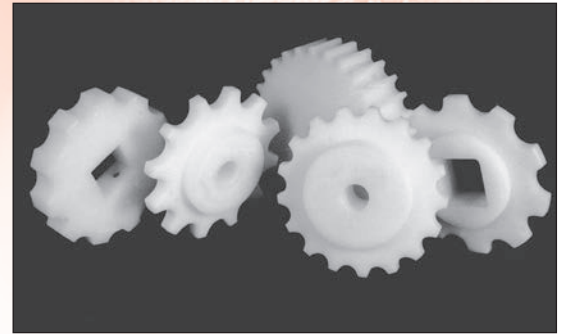
Part No.	Hub Dia.	Teeth	Length Thru Bore	Molded UHMW	Machined UHMW
B1607	1.89"	7	1 7/8	X	X
B1609	2.65"	9	1 7/8		X
B1613	3.90"	13	1 7/8		X
B1618	5.65"	18	1 7/8	X	X
B1623	7.42"	23	2"		X



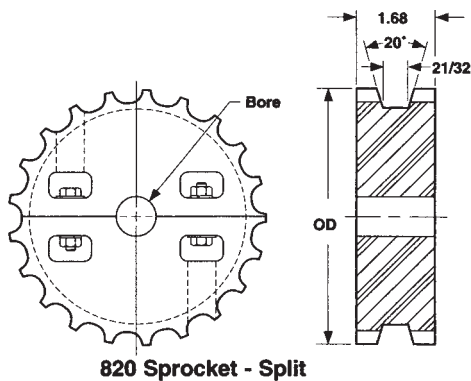
All other sizes available machined.

FLAT-TOP CONVEYOR SPROCKETS

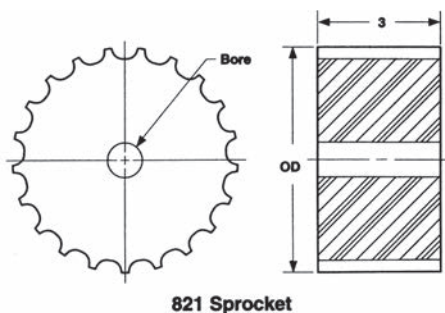
Machined UHMW flat top conveyor sprockets are USDA/FDA accepted and are direct replacements for cast, steel, or other plastic sprockets in idler and light drive applications. These sprockets are lightweight, chemical resistant and do not require lubrication. They are designed for use with steel or plastic flat top chain.



Product	Part No.	Teeth	Face	O.D.
#815 Sprocket	FTS 815 19	19	1 11/16"	4.610
	FTS 815 20	20	1 11/16"	4.860
	FTS 815 21	21	1 11/16"	5.120
	FTS 815 22	22	1 11/16"	5.350
	FTS 815 23	23	1 11/16"	5.590
	FTS 815 24	24	1 11/16"	5.830
	FTS 815 25	25	1 11/16"	6.070
	FTS 815 27	27	1 11/16"	6.560
	FTS 815 29	29	1 11/16"	7.050
	FTS 815 31	31	1 11/16"	7.530
	FTS 815 41	41	1 11/16"	9.930

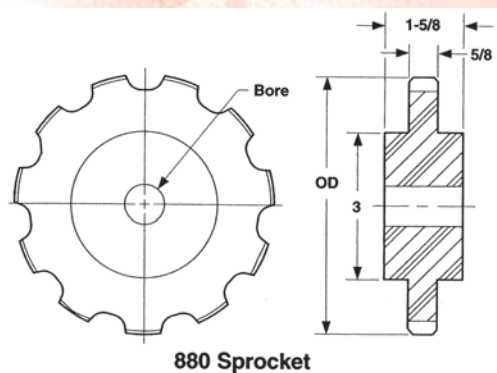


Product	Part No.	Teeth	Face	O.D.
#820 Sprocket	FTS 820 13	13	1 11/16"	4.610
	FTS 820 15	15	1 11/16"	4.860
	FTS 820 19	19	1 11/16"	5.120
	FTS 820 21	21	1 11/16"	5.350
	FTS 820 22	22	1 11/16"	5.590
	FTS 820 23	23	1 11/16"	5.830
	FTS 820 24	24	1 11/16"	6.070
	FTS 820 25	25	1 11/16"	6.560
	FTS 820 27	27	1 11/16"	7.050
	FTS 820 31	31	1 11/16"	7.530
	FTS 820 41	41	1 11/16"	9.930

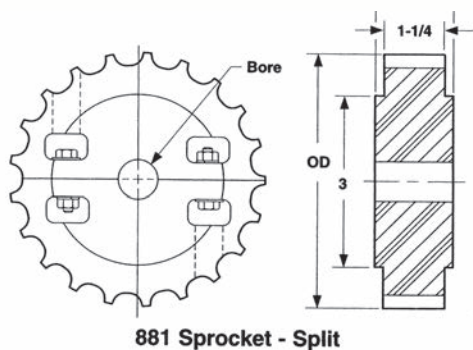


Product	Part No.	Teeth	Face	O.D.
#821 Sprocket	FTS 821 21	21	3"	5.120
	FTS 821 23	23	3"	5.590
	FTS 821 25	25	3"	6.070
	FTS 821 27	27	3"	6.560
	FTS 821 29	29	3"	7.050

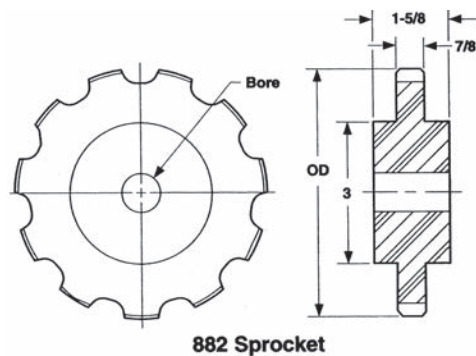
FLAT-TOP CONVEYOR SPROCKETS



Product	Part No.	Teeth	Face	O.D.
#880 Sprocket	FTS 880 09	9	5/8"	4.33
	FTS 880 10	10	5/8"	4.82
	FTS 880 11	11	5/8"	5.31
	FTS 880 12	12	5/8"	5.80
	FTS 880 15	15	5/8"	7.26



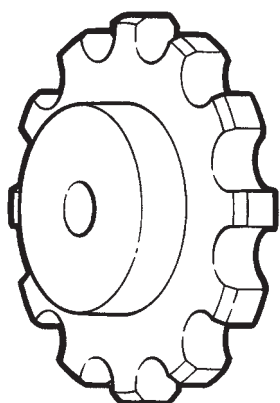
Product	Part No.	Teeth	Face	O.D.
#881 Sprocket	FTS 881 21	21	1 1/4"	5.124
	FTS 881 23	23	1 1/4"	5.590
	FTS 881 25	25	1 1/4"	6.070



Product	Part No.	Teeth	Face	O.D.
#882 Sprocket	FTS 882 09	9	7/8"	4.43
	FTS 882 10	10	7/8"	4.92
	FTS 882 11	11	7/8"	5.41
	FTS 882 12	12	7/8"	5.90
	FTS 882 15	15	7/8"	7.36

AG CHAIN SPROCKETS

Machined from USDA/FDA accepted UHMW, these sprockets are light weight, need no lubrication and can often be used as an "all plastic drive" in many light duty applications. However, if RPM and load become an important factor, a stainless steel hub can be mechanically fastened.



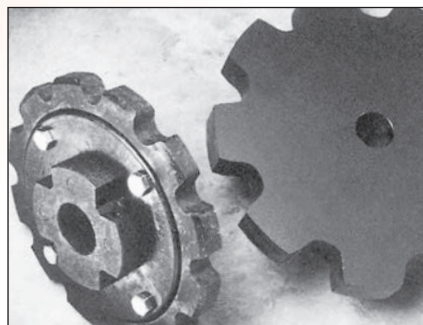
Materials Available

UHMW P.E.
Nylon
Moly-Filled Nylon
Oil-Filled Nylon
Polyurethane
Laminate
Acetal
*Other material available upon request

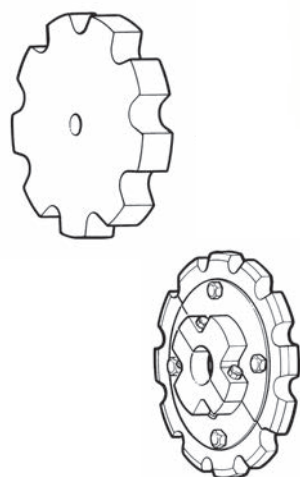
Product	Part No.	Teeth	Length through Bore	Pitch Diameter
#45 CHAIN 1.630" Pitch	AG4511	11	2"	5.79
	AG4514	14	2"	7.33
	AG4516	16	2"	8.36
	AG4518	18	2"	9.39
	AG4520	20	3"	10.42
	AG4524	24	3"	12.49
#52 CHAIN 1.506" Pitch	AG5211	11	2"	5.34
	AG5214	14	3"	6.77
	AG5216	16	3"	7.72
	AG5218	18	3"	8.67
	AG5220	20	3"	9.60
	AG5224	24	3"	12.00
#55 CHAIN 1.631" Pitch	AG5511	11	3"	5.79
	AG5514	14	3"	7.33
	AG5516	16	3"	8.36
	AG5518	18	3"	9.39
	AG5520	20	3"	10.43
	AG5524	24	4"	12.50
#62 CHAIN 1.654" Pitch	AG6211	11	3"	5.87
	AG6214	14	3"	7.43
	AG6216	16	3"	8.48
	AG6218	18	3"	9.53
	AG6220	20	3"	10.57
	AG6224	24	4"	12.15
#67 CHAIN 2.308" Pitch	AG6711	11	3"	8.19
	AG6714	14	3"	10.37
	AG6716	16	3"	11.83
	AG6718	18	3"	13.29
	AG6720	20	3"	14.75
	AG6724	24	4"	17.60

MILL CHAIN SPROCKET

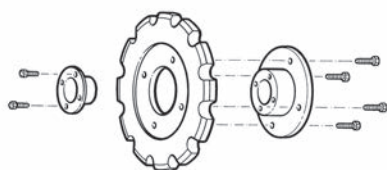
Diversified Plastics' mill chain sprockets are offered in your choice of UHMW, polyurethane, or nylon. They provide impact and corrosion resistance while at the same time protecting your chain and reducing operating noise. UHMW idler sprockets require no lubrication. Polyurethane and nylon sprockets are provided with grease Zerk. Our drive sprockets include a bolt on steel hub plate and are offered in your preferred taper lock style, or in straight bore.



1



Drive sprocket



Materials Available

UHMW P.E.
Nylon
Moly-Filled Nylon
Oil-Filled Nylon
Polyurethane
Laminate
Acetal
*Other material available upon request

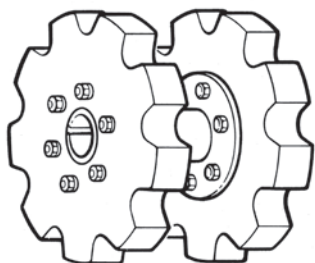
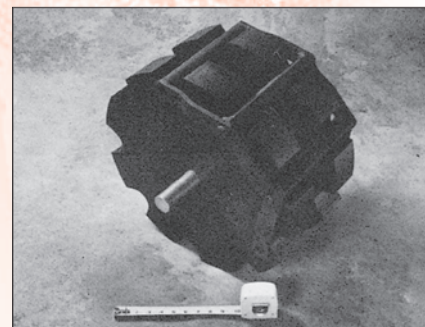
Product	Part No.	Teeth	Length Through Bore	Hub. Dia	Style
SPROCKET #78/81X	MC7807	7	3"	4"	A,B,C,D,S,X
	MC7808	8	3"	4"	A,B,C,D,S,X
	MC7809	9	3"	4"	A,B,C,D,S,X
	MC7810	10	3"	4"	A,B,C,D,S,X
	MC7811	11	3"	4"	A,B,C,D,S,X
	MC7812	12	3"	4-1/2"	A,B,C,D,S,X
	MC7813	13	3"	4-1/2"	A,B,C,D,S,X
	MC7814	14	3"	4-1/2"	A,B,C,D,S,X
	MC7815	15	3"	4-1/2"	A,B,C,D,S,X
SPROCKET #82	MC8208	8	3-1/4"	4"	A,B,C,D,S,X
	MC8209	9	3-1/4"	4"	A,B,C,D,S,X
	MC8210	10	3-1/4"	4"	A,B,C,D,S,X
	MC8211	11	3-1/4"	4"	A,B,C,D,S,X
	MC8212	12	3-1/4"	4"	A,B,C,D,S,X
	MC8213	13	3-1/4"	4"	A,B,C,D,S,X
	MC8214	14	3-1/4"	4"	A,B,C,D,S,X
	MC8215	15	3-1/4"	4"	A,B,C,D,S,X
SPROCKET #124	MC12409	9	4"	5"	A,B,C,D,S,X
	MC12410	10	4"	5"	A,B,C,D,S,X
	MC12411	11	4"	5"	A,B,C,D,S,X
	MC12412	12	4"	5"	A,B,C,D,S,X
	MC12413	13	4"	5"	A,B,C,D,S,X
SPROCKET #131/138	MC13109	9	3"	4"	A,B,C,D,S,X
	MC13110	10	3"	4"	A,B,C,D,S,X
	MC13111	11	3"	4"	A,B,C,D,S,X
	MC13112	12	3"	4"	A,B,C,D,S,X
	MC13113	13	3"	4"	A,B,C,D,S,X
	MC13114	14	3"	4"	A,B,C,D,S,X
SPROCKET #132	MC13208	8	6"	8-1/2"	A,B,C,D,S,X
	MC13209	9	6"	8-1/2"	A,B,C,D,S,X
	MC13210	10	6"	8-1/2"	A,B,C,D,S,X
	MC13211	11	6"	8-1/2"	A,B,C,D,S,X
	MC13212	12	6"	8-1/2"	A,B,C,D,S,X

Note: Other sizes available upon request.

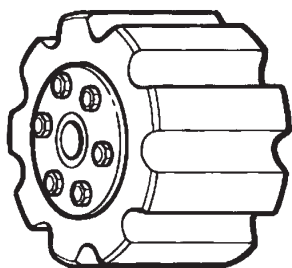
Note¹: Some sizes are available as a molded sprocket.

DRAG CHAIN SPROCKET

Diversified Plastics' drag chain sprockets are designed to increase the life of your chain runs. The solid UHMW teeth absorb system shock and eliminate the steel to steel contact that damages chain barrels and side bars. Drive versions are provided with heavy duty reusable steel hubs that are available in straight bore or taper lock design. They also include replaceable UHMW A-plate teeth that can be provided solid or split. Idlers are available with "No Lube" bores.



Medium Duty



Heavy Duty

Materials Available

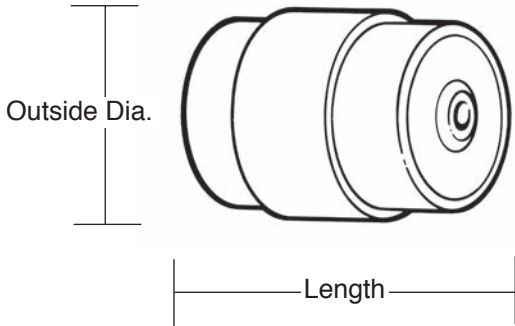
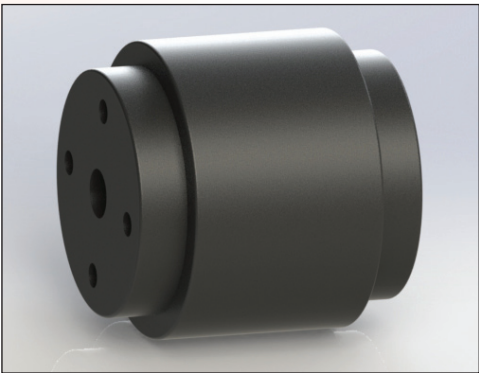
UHMW P.E.
Nylon
Moly-Filled Nylon
Oil-Filled Nylon
Polyurethane
Laminate
Acetal
*Other material available upon request

Product	Part No.	Teeth	Face
SPROCKET #104	MC10408	8	4-1/8"
	MC10409	9	4-1/8"
	MC10410	10	4-1/8"
	MC10411	11	4-1/8"
SPROCKET #110	MC11008	8	9"
	MC11009	9	9"
	MC11010	10	9"
	MC11011	11	9"
	MC11012	12	9"
SPROCKET #112	MC11207	7	9"
	MC11208	8	9"
	MC11209	9	9"
	MC11210	10	9"
SPROCKET #116	MC11607	7	13"
	MC11608	8	13"
	MC11609	9	13"
	MC11610	10	13"
SPROCKET #122	MC12206	6	8-3/4"
	MC12207	7	8-3/4"
	MC12208	8	8-3/4"
	MC12210	10	8-3/4"
SPROCKET #480	MC48007	7	11"
	MC48008	8	11"
	MC48009	9	11"
	MC48010	10	11"
	MC48011	11	11"
	MC48012	12	11"

Note: Other sizes available upon request.

DRAG CHAIN IDLER DRUMS

Diversified Plastics' solid UHMW idler drums increase the life of your chain runs by absorbing system shock and eliminating the steel to steel contact that causes barrel and side damage. The long wearing bore eliminates the need to grease and reduces maintenance costs.



Product	Part No.	Overall length	O.D.
DRUM #104	DRUM1208	12"	8"
	DRUM1408	14"	8"
	DRUM1608	16"	8"
DRUM #110 & 112	DRUM1414	14"	14"
	DRUM1614	16"	14"
	DRUM1814	18"	14"
	DRUM2014	20"	14"
DRUM #116 & 480	DRUM1418	14"	18"
	DRUM1618	16"	18"
	DRUM1818	18"	18"
	DRUM 2018	20"	18"
DRUM #122	DRUM1415	14"	15"
	DRUM1615	16"	15"
	DRUM1815	18"	15"
	DRUM2015	20"	15"

Note: Other sizes available upon request.

DRIVE COMPONENTS

GEARS

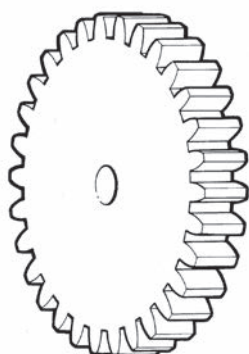
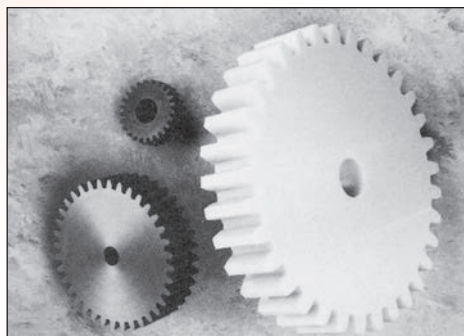


**DIVERSIFIED
PLASTICS, INC.**

Engineered plastics designed for the way you do business.

SPUR GEARS

Plastic gears provide for smooth quiet operation without lubrication.



Spur Gears 14-1/2° PA or 20° PA

Product	Part No.	Teeth	Pressure Angle	Pitch Dia.	Stock Bore	Extension
3DP	DP3P15	15	14-1/2° or 20°	5.000"	3/4"	A,B,C,D,X
	DP3P18	18	14-1/2° or 20°	6.000"	3/4"	A,B,C,D,X
	DP3P20	20	14-1/2° or 20°	6.667"	3/4"	A,B,C,D,X
	DP3P24	24	14-1/2° or 20°	8.000"	3/4"	A,B,C,D,X
	DP3P30	30	14-1/2° or 20°	10.000"	3/4"	A,B,C,D,X
	DP3P36	36	14-1/2° or 20°	12.000"	3/4"	A,B,C,D,X
	DP3P42	42	14-1/2° or 20°	14.000"	3/4"	A,B,C,D,X
	DP3P48	48	14-1/2° or 20°	16.000"	3/4"	A,B,C,D,X
	DP3P54	54	14-1/2° or 20°	18.000"	3/4"	A,B,C,D,X
	DP3P60	60	14-1/2° or 20°	20.000"	3/4"	A,B,C,D,X
4DP	DP4P15	15	14-1/2° or 20°	3.750"	3/4"	A,B,C,D,X
	DP4P18	18	14-1/2° or 20°	4.500"	3/4"	A,B,C,D,X
	DP4P20	20	14-1/2° or 20°	5.000"	3/4"	A,B,C,D,X
	DP4P24	24	14-1/2° or 20°	6.000"	3/4"	A,B,C,D,X
	DP4P30	30	14-1/2° or 20°	7.500"	3/4"	A,B,C,D,X
	DP4P36	36	14-1/2° or 20°	9.000"	3/4"	A,B,C,D,X
	DP4P42	42	14-1/2° or 20°	10.500"	3/4"	A,B,C,D,X
	DP4P48	48	14-1/2° or 20°	12.000"	3/4"	A,B,C,D,X
	DP4P54	54	14-1/2° or 20°	13.500"	3/4"	A,B,C,D,X
	DP4P60	60	14-1/2° or 20°	15.000"	3/4"	A,B,C,D,X
5DP	DP5P15	15	14-1/2° or 20°	3.000"	3/4"	A,B,C,D,X
	DP5P18	18	14-1/2° or 20°	3.600"	3/4"	A,B,C,D,X
	DP5P20	20	14-1/2° or 20°	4.000"	3/4"	A,B,C,D,X
	DP5P24	24	14-1/2° or 20°	4.800"	3/4"	A,B,C,D,X
	DP5P28	28	14-1/2° or 20°	5.600"	3/4"	A,B,C,D,X
	DP5P40	40	14-1/2° or 20°	8.000"	3/4"	A,B,C,D,X
	DP5P50	50	14-1/2° or 20°	10.000"	3/4"	A,B,C,D,X
	DP5P60	60	14-1/2° or 20°	12.000"	3/4"	A,B,C,D,X
	DP5P80	80	14-1/2° or 20°	16.000"	3/4"	A,B,C,D,X
6DP	DP6P12	12	14-1/2° or 20°	2.000"	3/4"	A,B,C,D,X
	DP6P18	18	14-1/2° or 20°	3.000"	3/4"	A,B,C,D,X
	DP6P24	24	14-1/2° or 20°	4.000"	3/4"	A,B,C,D,X
	DP6P36	36	14-1/2° or 20°	6.000"	3/4"	A,B,C,D,X
	DP6P48	48	14-1/2° or 20°	8.000"	3/4"	A,B,C,D,X
	DP6P60	60	14-1/2° or 20°	10.000"	3/4"	A,B,C,D,X
	DP6P72	72	14-1/2° or 20°	12.000"	3/4"	A,B,C,D,X
8DP	DP8P12	12	14-1/2° or 20°	1.500"	3/4"	A,B,C,D,X
	DP8P18	18	14-1/2° or 20°	2.250"	3/4"	A,B,C,D,X
	DP8P24	24	14-1/2° or 20°	3.000"	3/4"	A,B,C,D,X
	DP8P30	30	14-1/2° or 20°	3.750"	3/4"	A,B,C,D,X
	DP8P36	36	14-1/2° or 20°	4.500"	3/4"	A,B,C,D,X
	DP8P48	48	14-1/2° or 20°	6.000"	3/4"	A,B,C,D,X
10DP	DP10P15	15	14-1/2° or 20°	1.500"	1/2"	A,B,C,D,X
	DP10P18	18	14-1/2° or 20°	2.000"	1/2"	A,B,C,D,X
	DP10P28	28	14-1/2° or 20°	2.400"	1/2"	A,B,C,D,X
	DP10P32	32	14-1/2° or 20°	3.200"	1/2"	A,B,C,D,X
	DP10P48	48	14-1/2° or 20°	4.800"	1/2"	A,B,C,D,X
	DP10P54	54	14-1/2° or 20°	5.400"	1/2"	A,B,C,D,X
	DP10P60	60	14-1/2° or 20°	6.000"	1/2"	A,B,C,D,X
12DP	DP12P15	15	14-1/2° or 20°	1.250"	1/2"	A,B,C,D,X
	DP12P20	20	14-1/2° or 20°	1.667"	1/2"	A,B,C,D,X
	DP12P24	24	14-1/2° or 20°	2.000"	1/2"	A,B,C,D,X
	DP12P28	28	14-1/2° or 20°	2.333"	1/2"	A,B,C,D,X
	DP12P34	34	14-1/2° or 20°	2.833"	1/2"	A,B,C,D,X
	DP12P48	48	14-1/2° or 20°	4.000"	1/2"	A,B,C,D,X
	DP12P60	60	14-1/2° or 20°	5.000"	1/2"	A,B,C,D,X

Note: When ordering please specify 14-1/2° PA or 20° PA.

Note: Other sizes available upon request.

Materials Available

UHMW P.E.

Nylon

Moly-Filled Nylon

Oil-Filled Nylon

Polyurethane

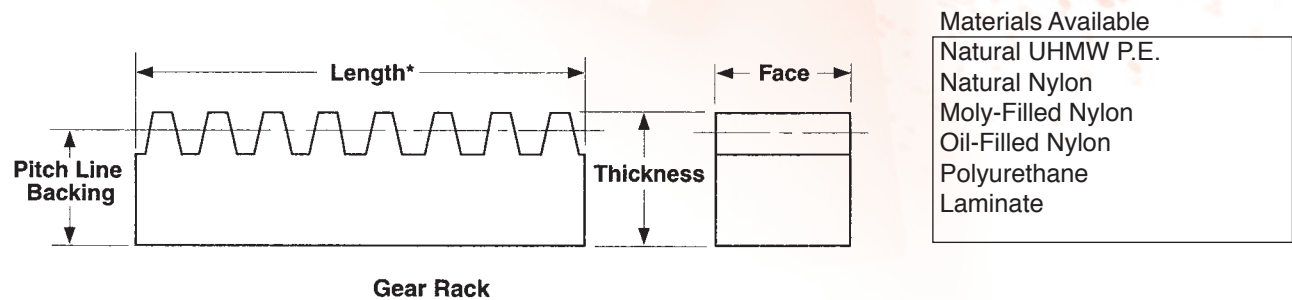
Laminate

Acetal

*Other material available upon request

GEAR RACKS

Gear racks made from engineered plastics provide smooth, quiet operation, and most material offerings require no lubrication.



- Materials Available
- Natural UHMW P.E.
 - Natural Nylon
 - Moly-Filled Nylon
 - Oil-Filled Nylon
 - Polyurethane
 - Laminate

Gear Racks 14-1/2° PA or 20° PA

Diametral Pitch	Part No.	Face Width (in.)	Overall Thick. (in.)	Pitch Line Backing
3	DPGR2403	3	1-1/2	1.167
4	DPGR2404	2	1-1/2	1.250
4	DPGR3204	2	2	1.750
5	DPGR2005	1-3/4	1-1/4	1.050
5	DPGR2405	1-3/4	1-1/2	1.300
6	DPGR1606	1-1/2	1	.833
6	DPGR2406	1-1/2	1-1/2	1.333
8	DPGR1208	1-1/4	3/4	.625
8	DPGR2008	1-1/4	1-1/4	1.125
10	DPGR1010	1	5/8	.525
10	DPGR1610	1	1	.900
12	DPGR0812	3/4	1/2	.417
12	DPGR1212	3/4	3/4	.667
16	DPGR0816	1/2	1/2	.438
20	DPGR0620	3/8	3/8	.325

Note: Our standard gear racks are nominal 48" lengths.
 Note: When ordering please specify 14-1/2° PA or 20° PA.

DRIVE COMPONENTS

BELT PULLEYS



**DIVERSIFIED
PLASTICS, INC.**

Engineered plastics designed for the way you do business.

TIMING BELT PULLEYS

All of Diversified Plastics' timing belt pulleys offer a quiet, light weight, and corrosion resistant alternative to conventional pulleys. Many of the materials we make available are FDA/ USDA approved for use in the food products industry. We offer a full range of pitches as well as a complete range of teeth providing maximum options for ration combinations. We have pulley designs to interchange with all major belt manufacturers. Ordering is easy with the information below, or call with any custom requirements you might have.

Note: High torque drive sprockets with hex steel insert available.

Belt pitch _____
 Belt width _____
 Belt manufacturer _____
 Number of teeth _____
 Hub style (A, B, C, Drive) _____
 Bore style and size (P, I, F, FK) _____
 Material choice _____
 Flanges required (yes/no) _____

Material Guide

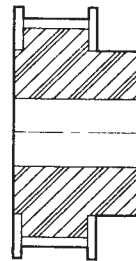
U - UHMW
 N - Nylon
 NM - Moly-Filled Nylon
 A - Acetyl

*FDA/USDA Approved

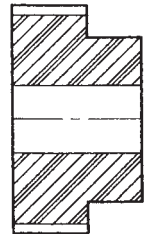
Bore Style

P - Pilot
 I - Idler (+ tolerance)
 F - Finished Straight Bore
 FK - Finished Bore w/Keyway and set screw
 BR - Bearing of Choice

Flange Configuration

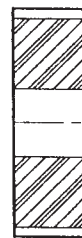


Double Flange

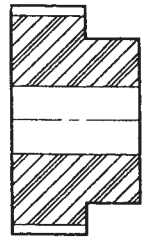


No Flange

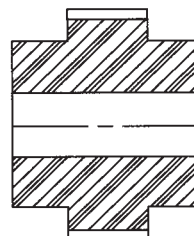
Hub Style



A-Style



B-Style



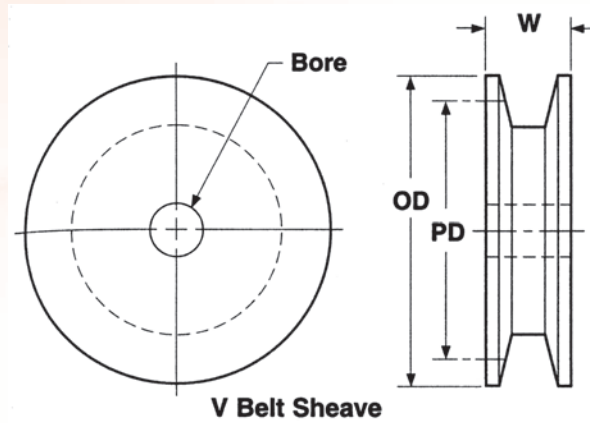
C-Style

V BELT SHEAVES

V-Belt sheaves are available in a wide variety of materials and configurations to meet your needs. Options include multiple belt sheaves or inserted bearings. Listed below are some of our standard sizes.

V Belt Sheaves, A Belt

Part No.	P.D.	O.D.	W	Stock Bore
DPVB1015	1.50	1.75	3/4	1/4
DPVB1018	1.80	2.05	3/4	1/4
DPVB1019	1.90	2.05	3/4	1/4
DPVB1020	2.00	2.25	3/4	1/4
DPVB1021	2.10	2.35	3/4	1/4
DPVB1023	2.30	2.55	3/4	1/4
DPVB1024	2.40	2.65	3/4	1/4
DPVB1025	2.50	2.75	3/4	1/4
DPVB1026	2.60	2.85	3/4	1/4
DPVB1028	2.80	3.05	3/4	1/4
DPVB1030	3.00	3.25	3/4	1/4
DPVB1032	3.20	3.45	3/4	1/2
DPVB1034	3.40	3.65	3/4	1/2
DPVB1036	3.60	3.85	3/4	1/2
DPVB1038	3.80	4.05	3/4	1/2
DPVB1040	4.00	4.25	3/4	1/2
DPVB1042	4.20	4.45	3/4	1/2
DPVB1044	4.40	4.65	3/4	1/2
DPVB1046	4.60	4.85	3/4	1/2
DPVB1048	4.80	5.05	3/4	1/2
DPVB1050	5.00	5.25	3/4	1/2
DPVB1052	5.20	5.45	3/4	1/2
DPVB1054	5.40	5.65	3/4	1/2
DPVB1056	5.60	5.85	3/4	1/2
DPVB1058	5.80	6.05	3/4	1/2
DPVB1060	6.00	6.25	3/4	1/2
DPVB1062	6.20	6.45	3/4	1/2
DPVB1064	6.40	6.65	3/4	1/2
DPVB1070	7.00	7.25	3/4	1/2
DPVB1082	8.20	8.45	3/4	1/2
DPVB1090	9.00	9.25	3/4	1/2
DPVB1106	10.60	10.85	3/4	1/2
DPVB1120	12.00	12.25	3/4	1/2



V Belt Sheaves, B Belt

Part No.	P.D.	O.D.	W	Stock Bore
DPVB1034	3.40	3.75	1	1/2
DPVB1036	3.60	3.95	1	1/2
DPVB1038	3.80	4.15	1	1/2
DPVB1040	4.00	4.35	1	1/2
DPVB1042	4.20	4.55	1	1/2
DPVB1044	4.40	4.75	1	1/2
DPVB1046	4.60	4.95	1	1/2
DPVB1048	4.80	5.15	1	1/2
DPVB1050	5.00	5.35	1	1/2
DPVB1052	5.20	5.55	1	1/2
DPVB1054	5.40	5.75	1	1/2
DPVB1056	5.60	5.95	1	1/2
DPVB1058	5.80	6.15	1	1/2
DPVB1060	6.00	6.35	1	1/2
DPVB1062	6.20	6.55	1	1/2
DPVB1064	6.40	6.75	1	1/2
DPVB1066	6.60	6.95	1	1/2
DPVB1068	6.80	7.15	1	1/2
DPVB1074	7.40	7.75	1	1/2
DPVB1086	8.60	8.95	1	1/2
DPVB1094	9.40	9.75	1	1/2
DPVB1110	11.00	11.35	1	1/2
DPVB1124	12.40	12.75	1	1/2

Note: Other sizes available upon request.

Materials Available

UHMW P.E.
Nylon
Moly-Filled Nylon
Oil-Filled Nylon
Polyurethane
Laminate
Acetal
*Other material available upon request

- Specify bore size (and keyway if required) when ordering.
- Multiple groove, deep groove, and custom available upon request.
- Please specify A or B belt.

CAN LINE PULLEY

Our molded UHMW can line pulleys offer a competitively priced alternative to conventional machined products. Many bore configurations are available to meet your specific requirements.



FEATURES:

- Noise reduction
- Corrosion resistant
- Extends life of cable

SIZES:

- 3" O.D. x 5/8" width for 5/16" cable
- Other machined sizes available
- Available with a variety of bushing options

APPLICATIONS:

- Cable conveying lines
- Food processing plants
- Canning plants

MATERIALS:

- UHMW
- Nylon

DRIVE COMPONENTS

WHEELS & ROLLERS



**DIVERSIFIED
PLASTICS, INC.**

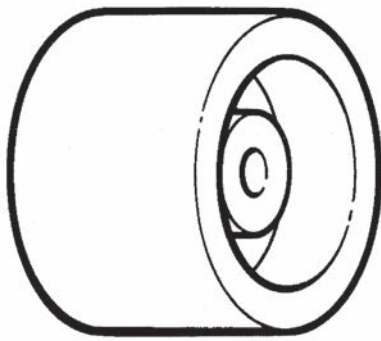
Engineered plastics designed for the way you do business.

MOLDED ROLLERS

DPI molds 3", 4", 5" and 6" diameter rollers, often used for components in replacement conveyor idlers. The rollers are molded from UHMW and widely used in timber industries, mining, food processing, etc.

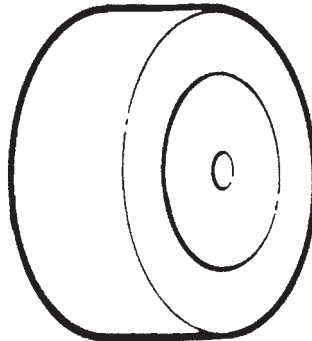


Style A



"Face"

Style B



"Face"

Part No.	Style	O.D.	Face
MW046	A	4"	6"
MW0125	B	1 1/4"	5/8"
MW0150	B	1 1/2"	1/4"

Note: Other sizes available upon request.

DRIVE COMPONENTS

AUGERS & ACCESSORIES



**DIVERSIFIED
PLASTICS, INC.**

Engineered plastics designed for the way you do business.

METERING & SPICE AUGERS

FEATURES:

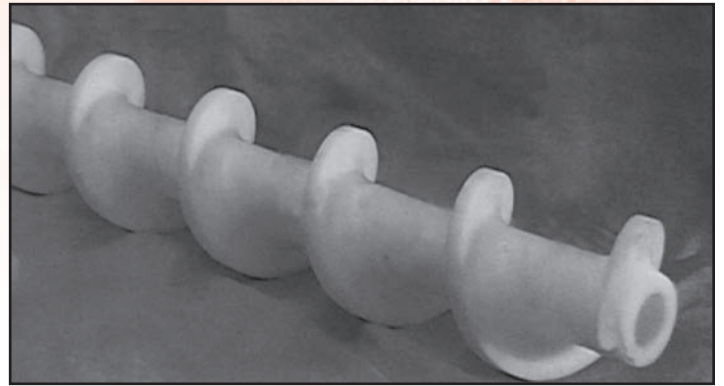
- USDA/FDA
- Wear resistant
- Corrosion resistant
- Light weight
- Optional steel shaft

APPLICATIONS:

- Metering applications
- Food processing plants
 - Salt
 - Coffee
 - Sugar
 - etc.

MATERIALS:

- UHMW
- Nylon
- Acetal



DRIVE COMPONENTS

CONVEYOR BELT ACCESSORIES



**DIVERSIFIED
PLASTICS, INC.**

Engineered plastics designed for the way you do business.

RATTLE ROLL



FEATURES:

- Longer lasting (v.s. belt scrapers)
- Centralizes waste material
- Cleans inverted cleats as well as cleated belts through vibration
- Running two dissimilar tooth profiles in tandem provide even greater vibration and cleaning
- Abrasion & corrosion resistant

SIZES:

- 6-Tooth • 8-Tooth
- 7-Tooth • 9-Tooth

APPLICATIONS:

- Used on conveyors in place of belt scrapers

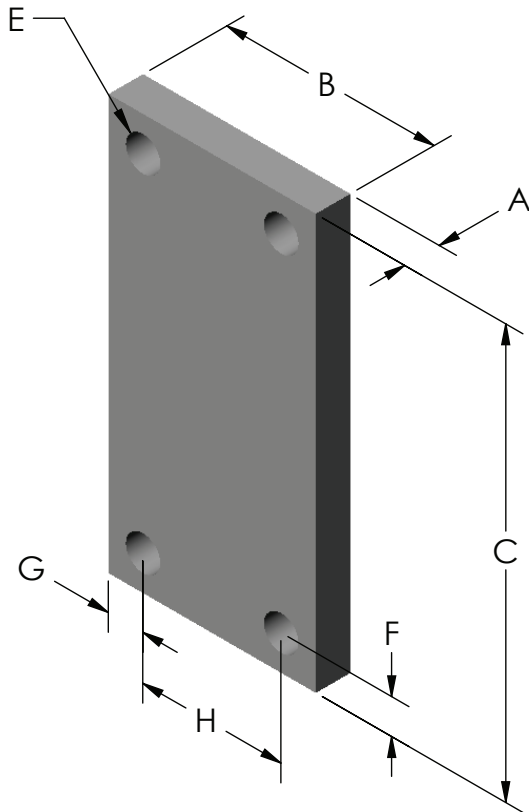
MATERIALS:

- UHMW with steel or stainless steel shafting

VIBRATING CONVEYOR REPLACEMENT SPRINGS

Diversified Plastics manufactures all of its conveyor leaf springs from high performance “Composoflex®” materials, the same material used by many of the leading original equipment manufacturers. We can provide E-glass/epoxy springs in both uni-directional or cross-ply orientation.

In an effort to make ordering easy and insure quality we will work from a sample drawing, or the form provided on this page. Contact one of our service representatives with any questions you might have.



- A = _____ Thickness
- B = _____ Width
- C = _____ Length
- D = _____ Total # of holes
- E = _____ Hole diameter
- F = _____ Length to hole center
- G = _____ Width to hole center
- H = _____ Hole center to hole center
- I = _____ Manufacturer of the conveyor
- J = _____ Application
- K = _____ Quantity

DRIVE COMPONENTS

CHAIN GUIDES & ATTACHMENTS

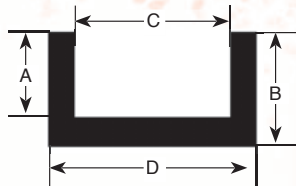


**DIVERSIFIED
PLASTICS, INC.**

Engineered plastics designed for the way you do business.

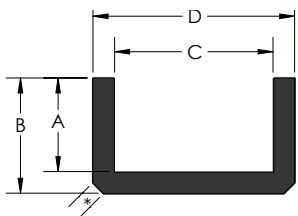
CHAIN GUIDE

UHMW chain guides have a very low coefficient of friction that results in lower energy consumption, increased chain life and significant reductions in operating costs. These UHMW guides are 6 times more abrasion resistant than steel, and absorb shock. Below are some of our standard profiles. Call us for these or any of your custom requirements.



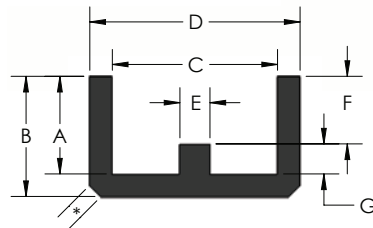
Millchain Channel

Part No.	A	B	C	D
DP3011	3/4"	1-1/4"	2-1/4"	3"
3013	3/4"	1-1/4"	3-1/4"	4"



Part No.	A	B	C	D
81XC3	3/8"	5/8"	1-3/4"	2-7/16"
78C4	1/2"	1"	3-1/16"	3-1/2"

*Fits in standard C3 or C4 Steel Channel

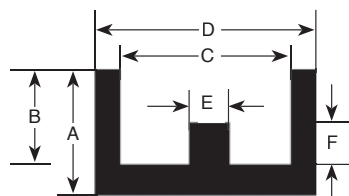


Part No.	A	B	C	D	E	F	G
81XC3W	3/8"	5/8"	1-3/4"	2-7/16"	1"	1/4"	1/8"

*Fits in standard C3 or C4 Steel Channel

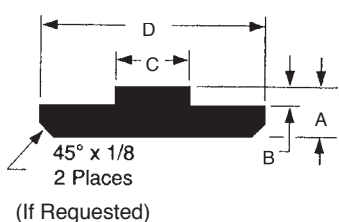
Rollerchain Channel

Part No.	A	B	C	D
RC40	1/2"	1/4"	3/4"	1"
RC50	1/2"	1/4"	1"	1-1/4"
RC60	5/8"	5/16"	1-1/4"	1-1/2"
RC80	5/8"	3/8"	1-1/2"	2"
RC100	3/4"	7/16"	1-13/16"	2-1/4"
RC120	7/8"	9/16"	2-1/4"	3"



Part No.	A	B	C	D	E	F
RC40W	5/16	.140	11/16	1	1/4	.080
RC50W	3/8	3/16	13/16	1-1/4	5/16	.100
RC60W	1/2	.213	1-1/8	1-1/2	7/16	.115
RC80W	1/2	1/4	1.340	2	9/16	.130
RC100W	5/8	.312	1-7/8	2-1/4	3/4	.210
RC120W	5/8	.375	2-1/4	2-3/4	7/8	.250

*Available in 10' lengths



Part No.	A	B	C	D
RC40T	5/16	.080	1/4	1
RC50T	5/16	.100	5/16	1-1/4
RC60T	5/16	.115	7/16	1-1/4
RC80T	3/8	.130	9/16	1-1/2
RC100T	1/2	.210	11/16	2
RC120T	1/2	.260	15/16	2-1/4

Note: All profiles available in 10' lengths.

Materials Available

UHMW P.E.

Nylon

Moly-Filled Nylon

Oil-Filled Nylon

Polyurethane

Laminate

Acetal

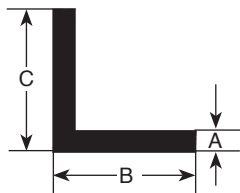
*Other material available upon request

Extruded Wear Strip (Coil Lengths)

Part No.	Thickness	Width
25205	1/4"	2"
25305	1/4"	3"
375305	3/8"	3"
5030305	1/2"	3"

- Extruded strip as shown above available in 250' coils.
- Other sizes available in 10' lengths.

Angle



Part No.	A	B	C
503535A	1/2"	3 1/2"	3 1/2"
503030A	1/2"	3"	3"
252020A	1/4"	2"	2"
251515A	1/4"	1 1/2"	1 1/2"

- Other shapes, materials and custom sizes available.
- Available in 10' lengths.

Materials Available

UHMW P.E.
 Nylon
 Moly-Filled Nylon
 Oil-Filled Nylon
 Polyurethane
 Laminate
 Acetal
 *Other material available upon request

THIN GAUGE WEAR STRIP

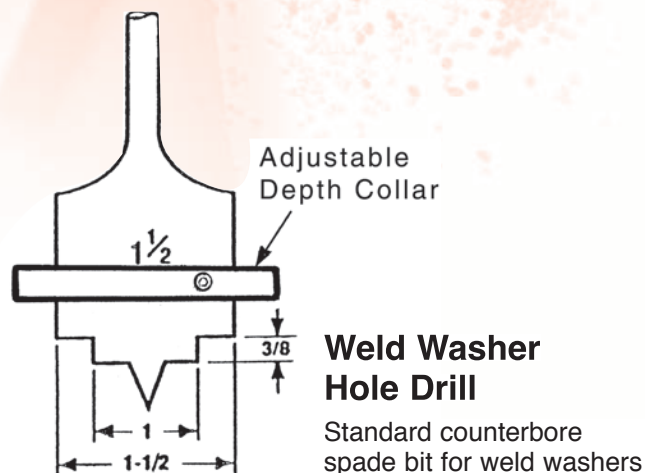
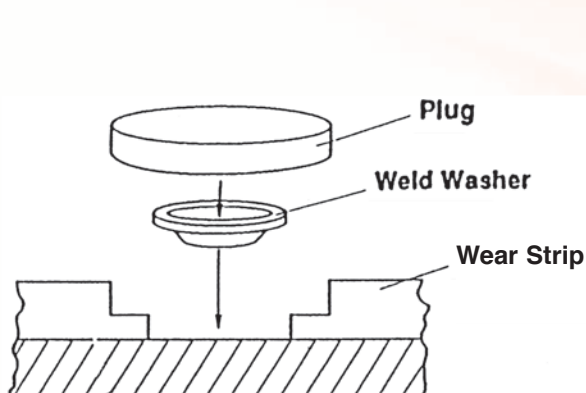
Diversified Plastics offers a wide range of UHMW thin gauge wear strips. UHMW has an outstanding impact strength, is self lubricating, and also has a low coefficient of friction which reduces wear on opposing parts. Our thin gauge wearstrip is also available with PSA (Pressure Sensitive Adhesive Backstrip) backing which eliminates the need for mechanical backing and opens up application possibilities where mechanical fastening isn't feasible.



FEATURES:

- Available with PSA backing
- Available in thicknesses ranging from .003" - .125"
- Available in widths ranging from 1/4" - 24"
- Standard black and natural
- Custom colors available
- FDA and USDA approved

Weld Washers, Plugs & Weld Washer Hole Drill



Weld Washers

Available in stainless steel for sanitary applications and carbon steel.

Part No.	Material	Dia.(in)
WW1125	Carbon steel	1-1/8
WW1125SS	Stainless steel	1-1/8
WW15S	Carbon steel	1-3/8
WW15SS	Stainless steel	1-3/8

Weld Plugs*

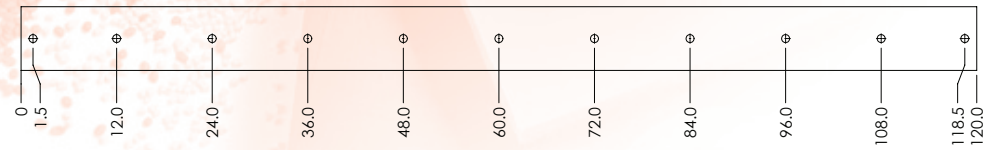
UHMW plugs are designed to cover weld washers after sheet is fastened.

Part No.	Material Thickness	Thickness (In.)
WWP15.250	For 1/2" material	0.250
WWP15.375	For 5/8" material	0.375
WWP15.500	For 3/4" material	0.500
WWP15.750	For 1" material	0.750

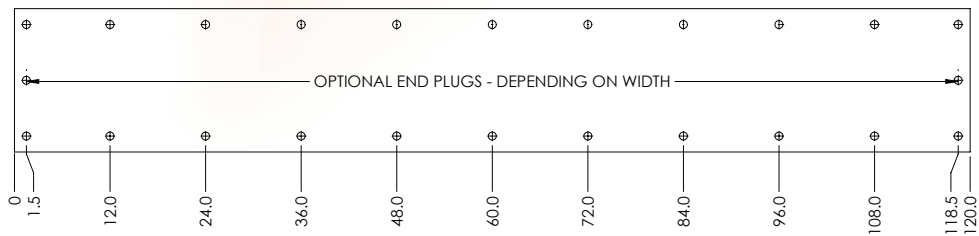
*Please specify black or natural

STANDARD UHMW STRIP FASTENING RECOMMENDATIONS

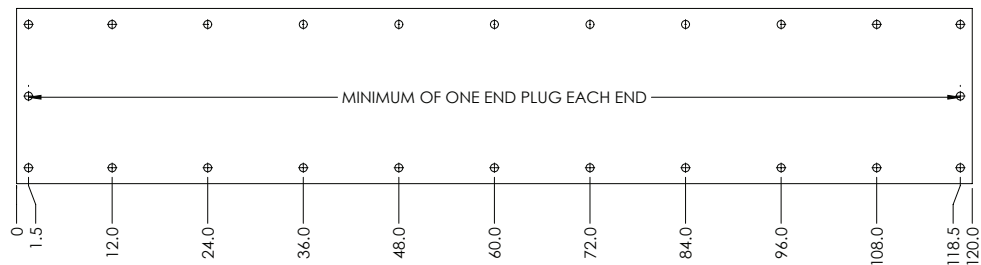
- Under 4" wide: 12" apart straight down center or strips



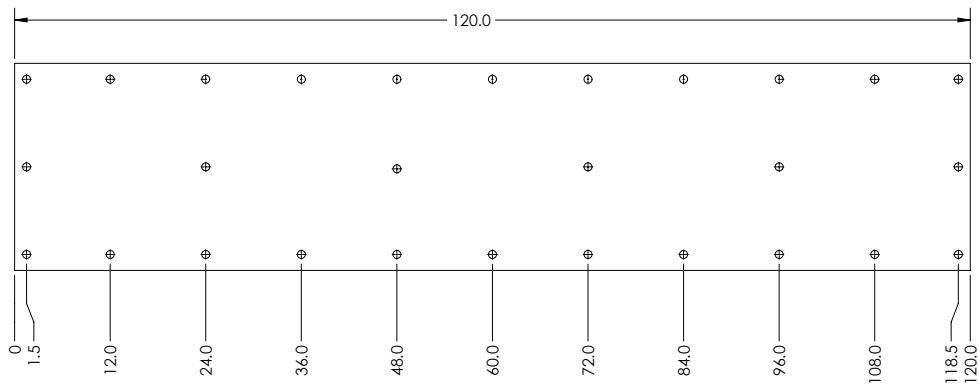
- 4" to 10" wide: staggered on 12" centers



- 11" to 18" wide: 12" apart down each edge

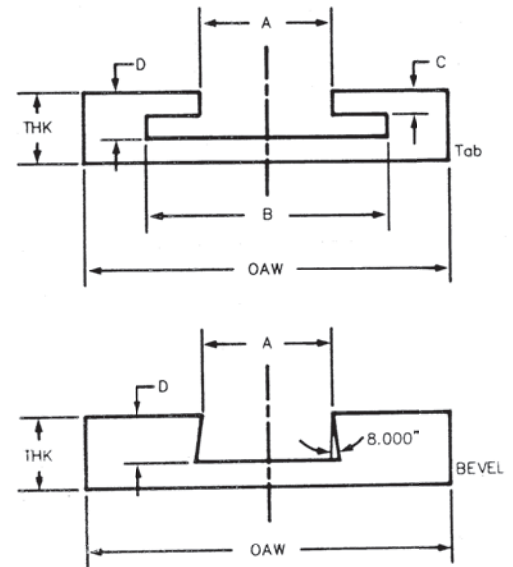
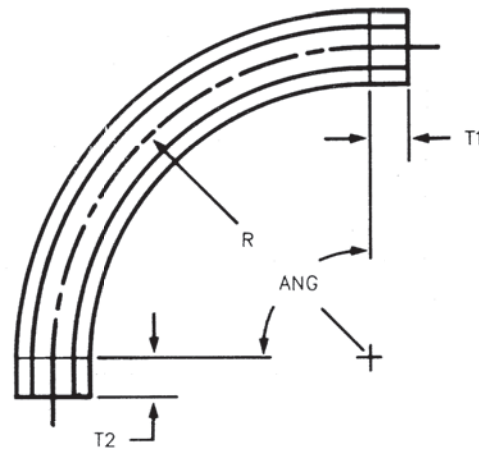


- Over 18" wide: 12" apart down each edge with intermediates every 24" down center of strip



Note: Other sizes available upon request.

DIVERSA-TRACK - CURVED & STRAIGHT TRACK FOR TABLE TOP CHAIN



FEATURES:

- Low coefficient of friction for smooth chain flow
- USDA / FDA material available
- Reduces noise and product movement
- Easy alignment of segments
- Segment length to 48\" for corner runs
- Available up to 120\" lengths for straight runs

INFORMATION NEEDED TO BUILD YOUR CUSTOM TRACK:

- Chain number _____
- Material _____
 - Color _____
 - Thickness _____
- Centerline radius _____
- Angle _____
- Run out tail (if required) _____
- Number of strands (for multiple lanes) _____
- Overall width _____
- Tab or bevel style chain _____
- Quantity _____

Materials Available

UHMW P.E.
 Nylon
 Moly-Filled Nylon
 Oil-Filled Nylon
 Polyurethane
 Laminate
 Acetal
 Cross-link
 *Other material available upon request

UHMW OREGON BEND



FEATURES:

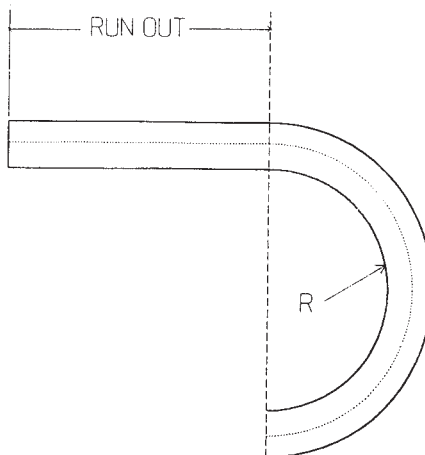
- Low coefficient of friction for smooth chain flow
- Easy installation
- Can be made to custom specifications
- Protects chain from metal to metal wear

MATERIALS:

- Natural UHMW-PE

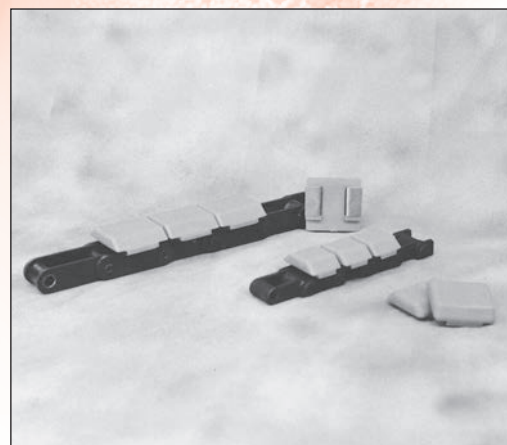
INFORMATION NEEDED TO BUILD YOUR CUSTOM OREGON BENDS

- Inside radius _____
- Run out length (Top) _____
- Run out length (Bottom) _____
- Chain size _____
- With centering strip (Roller Chain Only)
☐ Yes ☐ No

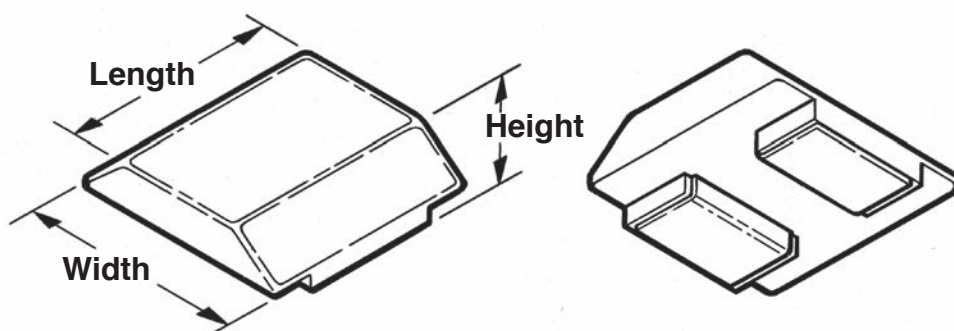


CHAIN TOPS

Weld-on chain tops are used widely in the lumber industry and have many advantages. The orange UHMW Chain Tops are great for applications where non-marking and back-up loads are a concern. The low friction surface is used in areas such as planed lumber conveyors, transfer conveyors, stackers/unstackers, etc. The softer high grip chain tops are again non-marking and have a grip surface for areas with incline and decline. These chain tops are all manufactured with a large carrying surface and thick 12 gauge steel for easy welding.



Part No.	Material	Length	Width	Height
CT78UH	UHMW	2 1/2"	2 5/8"	11/16"
CT78ST	High Grip	2 1/2"	2 5/8"	11/16"
CT81UH	UHMW	2 1/2"	2 1/8"	23/32"
CT81ST	High Grip	2 1/2"	2 1/8"	23/32"
CT557UH	UHMW	1 9/16"	2 1/8"	11/16"
CT557ST	High Grip	1 9/16"	2 1/8"	11/16"



POLYURETHANE PRODUCTS

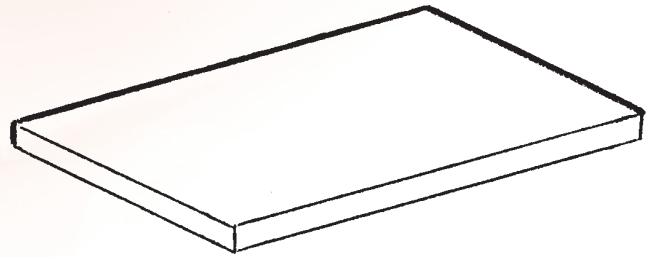


**DIVERSIFIED
PLASTICS, INC.**

Engineered plastics designed for the way you do business.

DIVERSALINER

Tough polyurethane liner plate for the mining, lumber, paper, sand & gravel and grain handling industries.



FEATURES:

- Outstanding abrasion resistance
- Light weight
- Flexible for easy installation
- Superior cut & tear strength
- Noise dampening
- Fastening systems available
- Available bonded steel backing plate

SIZES:

- 1/4", 3/8", 1/2", 3/4", 1" thick
- 4' x 8' sheets
- Custom sizes available

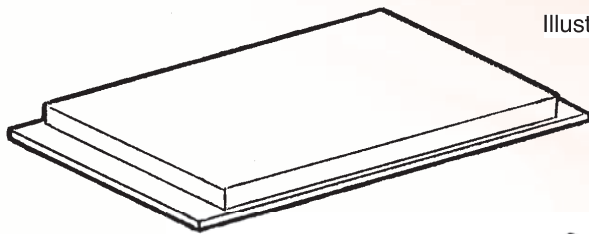
APPLICATIONS:

- Hopper lining
- Chute lining
- Impact pads

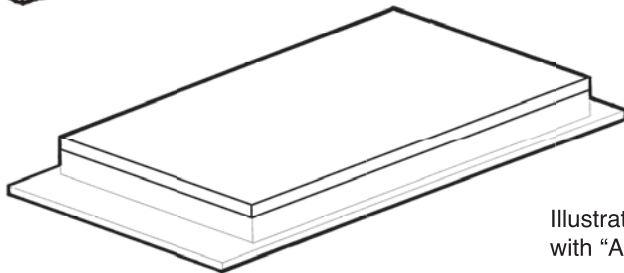
MATERIALS:

- Available enhanced with ceramic
- Custom shore hardnesses available

EA-55 POLYURETHANE



Illustrates bonded to steel backing plate



Illustrates bonded to steel backing plate with "AR" plate cover

FEATURES:

- Reduces rebound
- Aids product placement
- Cuts noise levels
- Prevents vibration transmitted
- Protects finished product
- Fastening systems available
- Bonds to steel backing plate
- Bearing material can be bonded to face
- Available with protective face plates (several materials available)

APPLICATIONS:

- Lumber and plywood
- Material handling cushions
- Shock absorbing bearing pads
- "Bang" boards

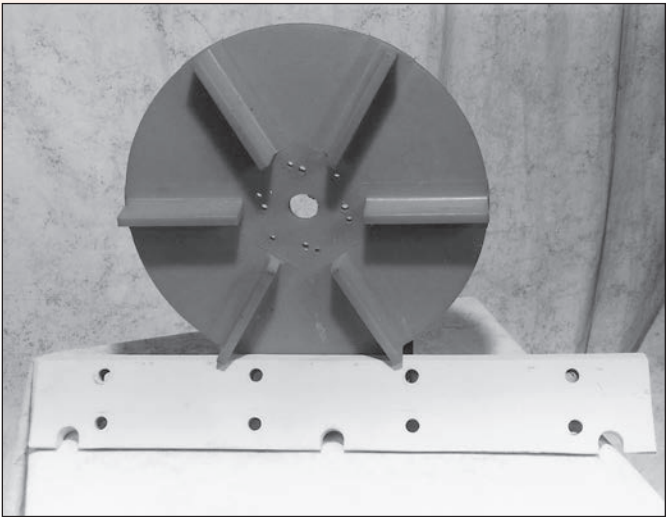
MATERIALS:

- Specially formulated 55A polyurethane

SPREADER WHEELS SAND, SALT & FERTILIZER

For road maintenance vehicles

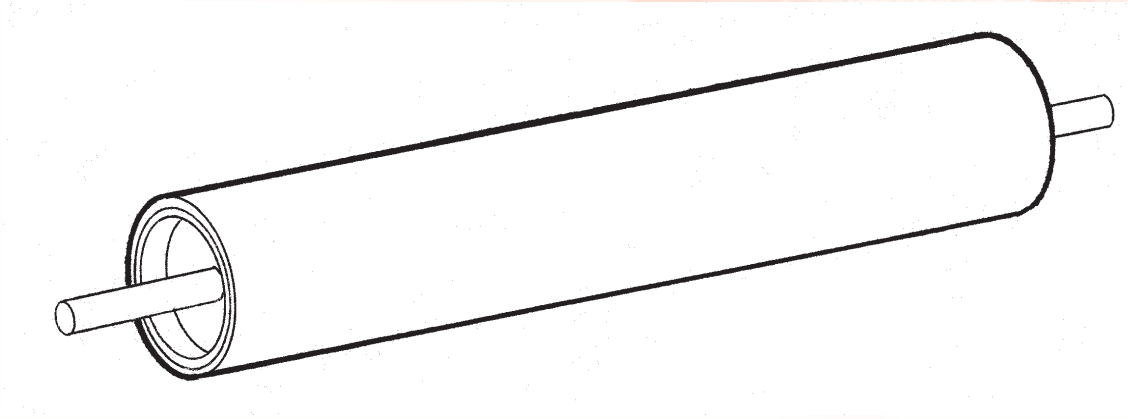
Proven under demanding, often sub-zero conditions, our polyurethane spinners are shock-absorbing, abrasion and corrosion resistant. Their flexibility prevents sand from freezing, ensuring maximum spreading effectiveness. Heavy-duty “dual-directional” fins allow wheel to be spun in either direction. All wheels come with a reinforced universal bolt pattern.



Part No.	O.D.	I.D.	Height
SSW-20	20	1 1/2"	2 1/8 "
SSW-18	18	1 1/2"	2 1/8 "

Contact Diversified Plastics for your polyurethane snow plow shear & bumper plates

URETHANE ROLLS



FEATURES:

- New rolls
- Recoat old rolls
- High quality urethane
- Highly visible colors
- Close tolerance machining available

SIZES:

- 1" dia. through 14" dia.
- 1' long through 10' long

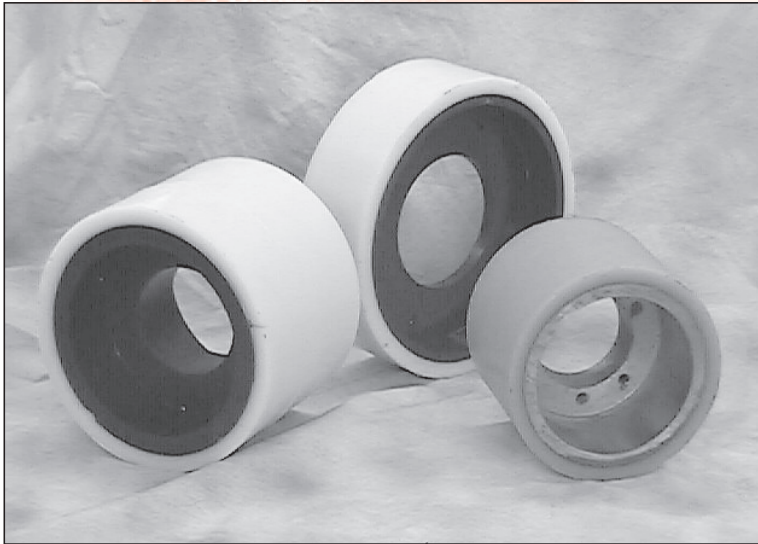
APPLICATIONS:

- Sander bed rolls
- Hold down rolls
- Crowned rolls
- Traction rolls
- Planer feed rolls

MATERIALS:

- 40A – 75D urethane
- Additives available

URETHANE WHEEL RECOVER



FEATURES:

- New wheels
- Recoat used wheels
- High quality urethane
- Highly visible colors
- Close tolerance matching available
- Non-marking
- No pitch build up

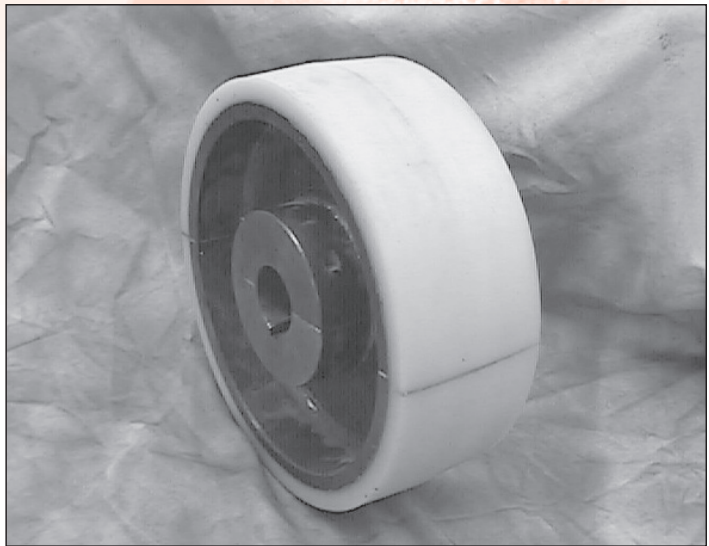
APPLICATIONS:

- Hold down wheels
- Feed wheels
- Drive wheels

MATERIALS:

- 40A - 75D urethane
- Additives available

URETHANE CROWN PULLEY



FEATURES:

- Cost effective recoating
- High grip
- Reduced material buildup
- Various durometers

APPLICATIONS:

- Tray belt drive & idler pulleys
- Veneer transfer
- Panel transfer

MATERIALS:

- Urethane

PRODUCTS FOR SPECIFIC INDUSTRIES

LUMBER MILL

Carriage Wheels	67
Carry-Over Wheel	68
Chain Guide	51-52
Chain Tops	58
Diverter Arms.....	69
Drag Chain Idler Drum	35
Drag Chain Sprocket	34
EA-55 Polyurethane.....	61
Even Ending Roll	70
J-Hooks	71
Kiln Cart Bushings.....	11
Mill Chain Sprocket.....	33
Pusher Lugs	72
Roll End Bearings	14-16
Roller Lugs & Lug Pins.....	73
Slider Blocks	74
Split Tipple Bearings	10
Steel Capped Split Bearing.....	9
Sticker Placement Aims.....	75
Swede Roll	76
Tipple Arm.....	77
UHMW Oregon Bend.....	57
Urethane Rolls	63
Urethane Wheel Recover	64
Veneer and Lumber Cart Wheels	78

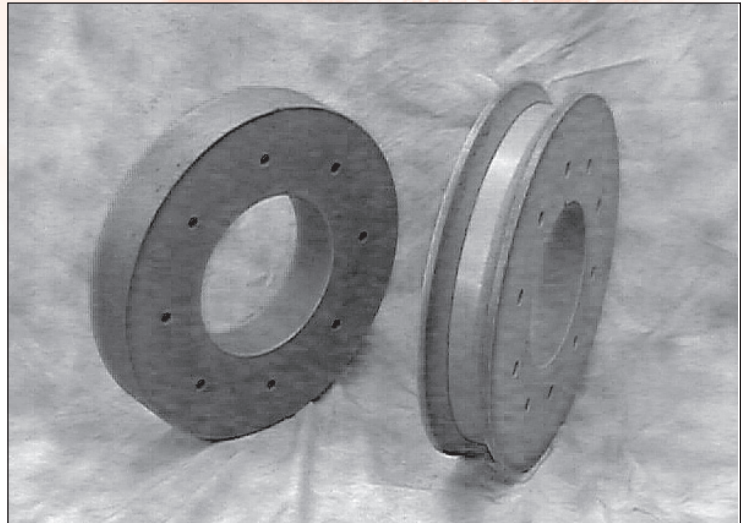


**DIVERSIFIED
PLASTICS, INC.**

Engineered plastics designed for the way you do business.

CARRIAGE WHEELS

Send DPI a used steel “V” Track and a used flat track wheel. We will convert your existing hubs to accept our high impact polyamide wheels. Diversified will then provide you or your machine shop a set of drawings that will allow you to convert the balance of your existing steel hubs to accept our replaceable plastic wheels.



FEATURES:

- Save money, save freight, save your tracks!
- All but eliminates track wear
- Quieter & smoother operation
- Longer wear life than cast steel
- Lighter weight
- Non-corrosive
- Excellent resilience to shock
- Available in complete assembly or purchase our wheels only

APPLICATIONS:

- Log carriages
- Saw carriages

MATERIALS:

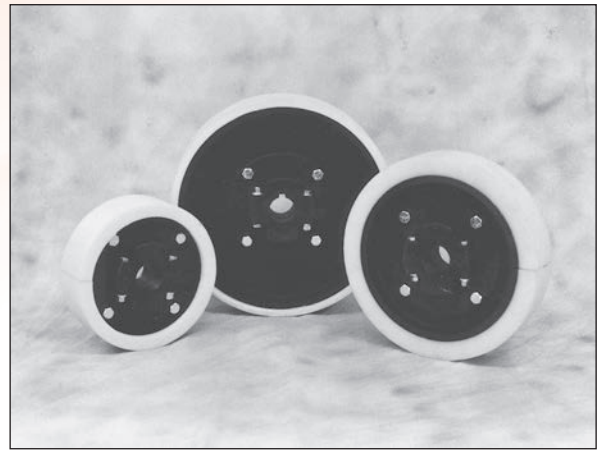
- High impact polyamide

SIZES:

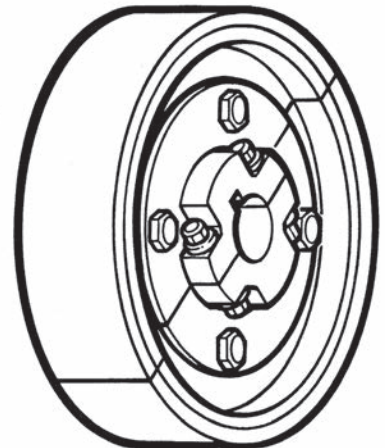
- 8" to 24" O.D.
- V & flat wheels

CARRY-OVER WHEEL

Urethane coated carry-over wheels are commonly used in the wood products industry for board carry-over applications between chain runs. They are manufactured from high strength urethane materials which give them impact resistance as well as light weight construction and split design for easy installation. The soft urethane coating adds to their versatility in uses such as traction wheels, hold down wheels and feed rolls.



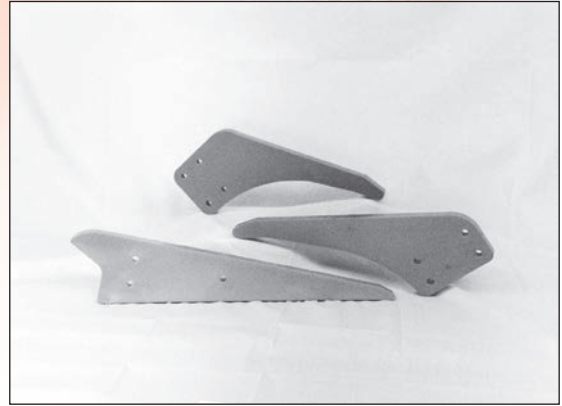
Part No.	O.D.	FACE
COW 10	10"	3"
COW 12	12"	3"
COW 12.5	12 1/2"	3"
COW 13	13"	3"
COW 13.5	13 1/2"	3"
COW 14	14"	3"
COW 14.5	14 1/2"	3"
COW 15	15"	3"
COW 16	16"	3"



Specify Bore and Keyway

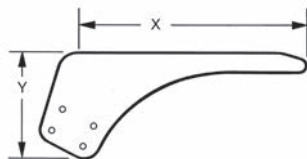
DIVERTER ARMS

Diverter arms are molded from impact resistant, low friction UHMW and polyurethane. They are orange in color and very economical. The light weight construction allows the arm to tip up and down quickly with low inertia. We have a large selection of molded sizes available.

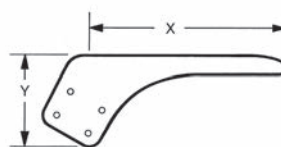


Part No.	Style	Thickness	X	Y	
DIV 1	A	1"	1'-6 1/2"	9"	
DIV 2	A	1"	1'-5 1/2"	8"	
DIV 3	B	1"	1'-8 1/2"	8"	
DIV 4	B	1"	1'-2 1/2"	8"	
DIV 5	A	1"	1'-3 1/2"	9"	
DIV 6	A	1"	1'-9 1/2"	9"	
DIV 7	A	1"	1'-10"	9 1/2"	
DIV 8	C	1"	1'-6 1/2"	6 7/8"	(4 hole pattern)
DIV 9	A	1"	1'-6 1/2"	9"	
DIV 10	B	1"	1'-8 1/2"	7 3/4"	
DIV 12	A	1"	1'-8"	9 1/4"	
DIV 22	C	1"	2'-0"	6 3/4"	(2 hole pattern)
DIV 26	D	1 1/8"	2'-0"	5 1/2"	
DIV 29	C	1"	1'-10"	7 1/2"	(3 hole pattern)

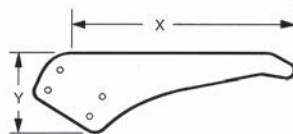
Note: Other sizes available upon request.



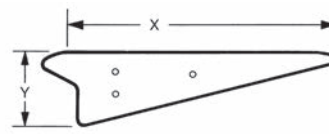
Style (A)



Style (B)



Style (C)



Style (D)

EVEN ENDING ROLL



FEATURES:

- Positive positioning
- More durable than rubber
- Stays cleaner than rubber
- Choice of durometer
- Reconditionable

MATERIALS:

- Urethane over steel

APPLICATIONS:

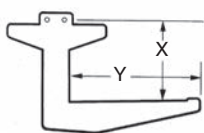
- Lug loaders
- Trimmers
- Sorters
- Stackers

J-HOOKS

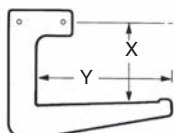
Proven throughout the wood products industry, our J-hooks are non-marking, shock absorbing and impact resistant. They are light weight, which helps reduce system power consumption. J-hooks are very economical and can be molded in our proprietary orange co-polymer as well as UHMW or urethane. To add strength our J-hooks are also available with steel inserts.



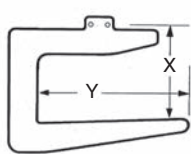
Part No.	Style	X	Y	Head Thickness	Holes C-C	Bolt Dia.
J1	A	9 1/2"	11 3/4"	1"	1 1/2"	1/4"
J2	A	7 1/2"	12"	1"	1 1/2"	1/4"
J3	B	8"	12 1/4"	1 1/4"	4"	3/8"
J4	D	11 1/2"	11 1/2"	1"	3 1/2"	3/8"
J5B	C	7 1/2"	17 3/4"	1"	1 1/2"	1/4"
J6	B	7 5/8"	12 1/4"	1 3/8"	4"	1/4"
J7	C	8 5/8"	14"	1 1/32"	1 1/2"	1/4"
J8	C	8 3/4"	15 1/2"	1 1/32"	1 1/2"	1/4"
J9	D	12 1/4"	14 1/4"	1 1/32"	2"	1/4"
J10B	C	8"	10 3/4"	1 1/32"	1 1/2"	1/4"
J11	C	9 3/4"	19 1/4"	1 1/32"	1 1/2"	1/4"
J12	D	9 1/4"	12"	1 1/16"	1 1/2" & 3 5/8"	1/4" & 3/8"
J13	C	9 1/4"	9 1/4"	1 1/32"	1 1/2"	1/4"
J14	C	7 1/2"	9 1/4"	1 1/16"	1 1/2"	1/4"
J15	C	11 1/8"	17 7/8"	1 1/32"	1 1/2"	1/4"
J16	C	7 7/8"	12 3/8"	1 1/32"	1 1/2"	1/4"
J16 (MOD)	C	7 7/8"	12 3/8"	1 1/32"	2"	1/4"
J17	E	7 1/4"	9 1/8"	1 1/16"	1 1/2"	1/4"
J19	F	6 1/2"	7 1/4"	1 1/32"	1"	1/4"
J20	D	12 1/4"	12 1/2"	1 1/32"	3 5/8"	3/8"
J20 M2	D	12 1/4"	10"	1 1/32"	3 5/8"	3/8"
J21	E	7 1/2"	12"	1 1/16"	1 1/2"	1/4"
J22	C	10 3/8"	10 1/2"	1 1/16"	1 1/2"	1/4"
J23	B	7 1/2"	12 1/4"	1 1/8"	4"	3/8"
J24	C	9 1/8"	17 3/4"	1 1/32"	1 1/2"	1/4"
J25	B	8 1/8"	12 3/4"	1 1/32"	3" (3 holes)	3/8"
J26	C	10"	18 1/2"	1 1/16"	1 1/2"	1/4"
J27	D	11 1/4"	13"	1 1/16"	4"	1/4"



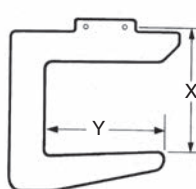
Style (A)



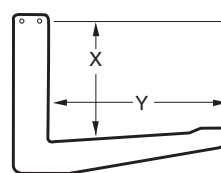
Style (B)



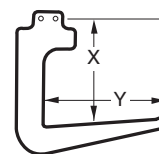
Style (C)



Style (D)



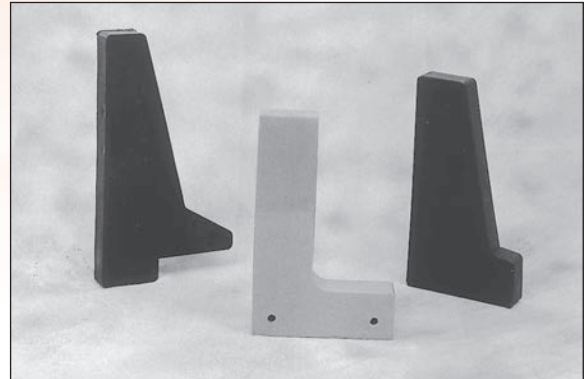
Style (E)



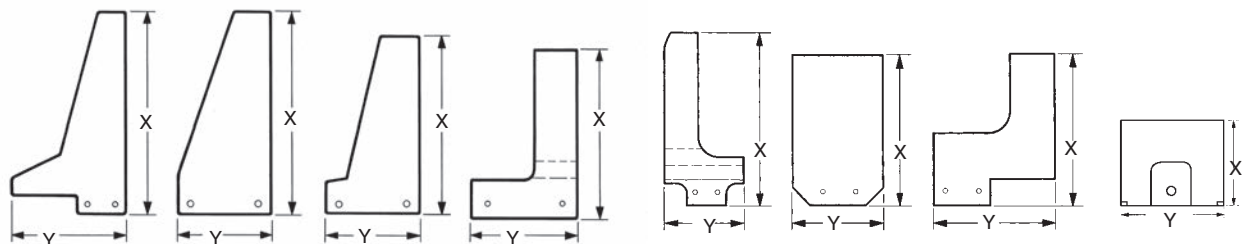
Style (F)

PUSHER LUGS

Proven throughout the wood products industry, our pusher lugs are non-marking, shock absorbing and impact resistant. They are light weight and reduce system power consumption. Pusher lugs are very economical and available in a variety of colors molded of 80A to 70D urethane, UHMW and co-polymer. To add strength our pusher lugs are also available with steel inserts.



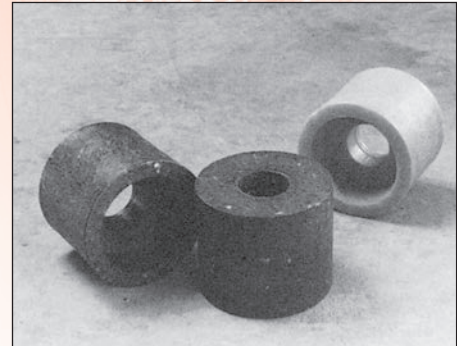
Part No.	Style	X	Y	Head Thickness	Holes C-C	Bolt Dia.
LUG P	A	10-1/2"	6"	1-1/16"	1-1/2"	1/4"
LUG PM	A	8-1/2"	6"	1-1/16"	1-1/2"	1/4"
LUG P1	A	10-1/2"	6"	1-5/16"	1-1/2"	1/4"
LUG P2	B	10-1/2"	4-3/4"	1-1/16"	3-5/8"	3/8"
LUG P3	C	9-1/4"	4-3/4"	1-1/16"	3-5/8"	3/8"
LUG P4	D	9-1/4"	5-1/2"	1-3/8"	4"	1/4"
LUG P5	E	7-3/4"	3-1/2"	1-1/16"	1"	1/4"
LUG P6	F	6-3/4"	4"	1-1/16"	1-1/2"	1/4"
LUG P7	F	8-3/4"	4"	1-1/16"	1-1/2"	1/4"
LUG P8	F	3-1/4"	2-1/4"	15/16"	3/4"	1/4"
LUG P9	G	7"	5-1/2"	1-1/8"	1-1/2"	1/4"
LUG P10	A	8-1/16"	6-3/16"	1-1/16"	1-1/2"	1/4"
LUG P11	A	9-11/16"	6-1/4"	1-1/16"	1-1/2"	1/4"
LUG P12	A	6-5/8"	6-3/16"	1-1/16"	1-1/2"	1/4"
LUG P13	A	6-1/2"	6-1/4"	1"	1-1/2"	1/4"
Optimizer Lug	H	2-1/2"	2-7/8"	3/4"		5/16"



Style (A) Style (B) Style (C) Style (D) Style (E) Style (F) Style (G) Style (H)

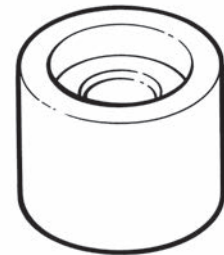
ROLLER LUGS & LUG PINS

Proven throughout the wood products industry, our roller lugs are non-marking, shock absorbing and impact resistant. They have a low coefficient of friction. Roller lugs are very economical and available in orange molded UHMW. Available with or without steel pins.



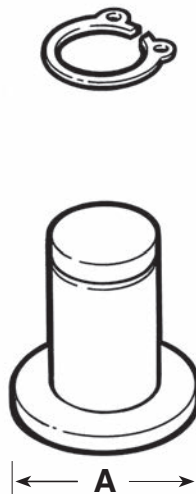
Roller Lugs

Part No.	O.D.	I.D.	Height	Top Counterbore		Bottom Counterbore	
				Dia.	Depth	Dia.	Depth
LUG 1A	2 3/4"	1"	2 1/4"	2"	13/16"	2"	9/16"
LUG 1B	2 3/4"	1"	2 1/4"	2"	15/16"	2"	7/16"
LUG 4	3 1/2"	1 1/2"	2 1/4"	2 3/8"	1/2"	N/A	N/A
LUG 5A	2 3/4"	1"	3 1/4"	2"	13/16"	2"	9/16"
LUG 5B	2 3/4"	1"	3 1/4"	2"	15/16"	2"	7/16"
LUG 6	2 3/4"	1 1/2"	1 3/4"	2 5/16"	3/16"	N/A	N/A
LUG 7	3 7/8"	1 1/2"	2 1/4"	2 7/16"	9/16"	N/A	N/A
LUG 8	2 3/4"	1"	2 1/4"	2"	13/16"	N/A	N/A
LUG 9	2 3/4"	1"	1 3/4"	2 3/8"	1/2"	2 3/8"	1/2"
LUG 10	2 1/2"	7/8"	2 3/4"	1 13/16"	1"	N/A	N/A



Lug Pins

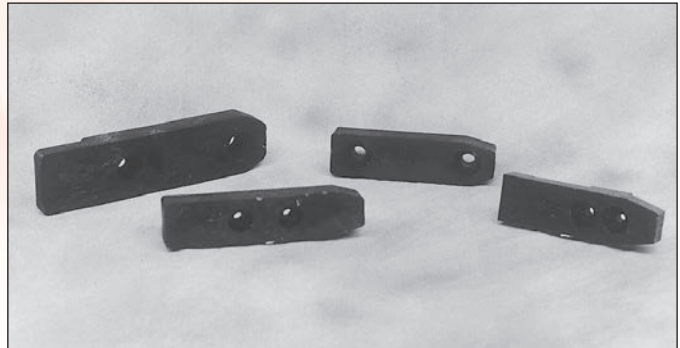
Part No.	A
S-RPIN 1A	1 15/16"
S-RPIN 1B	1 15/16"
S-RPIN 4	1 15/16"
S-RPIN 5A	1 15/16"
S-RPIN 5B	1 15/16"
S-RPIN 6	1 15/16"
S-RPIN 7	1 15/16"
S-RPIN 8	1 15/16"
S-RPIN 9	1 15/16"
S-RPIN 10	1 15/16"



Note: Other sizes available upon request.

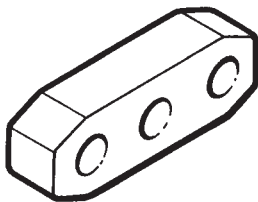
SLIDER BLOCKS

Proven throughout the wood products industry, our slider blocks have a low coefficient of friction, are shock absorbing, and impact resistant. They are very economical and available in black molded UHMW.

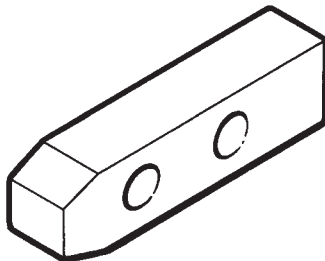


Part No.	Style	Length	Width	Thickness	Bolt C-C	Bolt Dia.
SLB1	A	4 1/2"	1 1/2"	1"	1 1/2"	1/4"
SLB2	B	6"	1 3/8"	1"	1 1/2"	1/4"
SLB2M	B	6"	1 3/8"	3/4"	1 1/2"	1/4"
SLB3N	C	8"	2"	3/4"	4"	3/8"
SLB3W	C	8"	2"	1"	4"	3/8"
SLB4	A	4 1/2"	1 1/2"	13/16"	1 1/2"	1/4"
SLB5	B	6"	1 1/2"	1 1/4"	2"	5/16"
SLB6	B	5 3/8"	1 3/8"	1"	3 5/8"	3/8"
SLB8	B	5 3/8"	1 3/8"	1 1/4"	3 5/8"	3/8"
SLB9	B	4 3/4"	1 1/4"	1"	1 1/2"	1/4"
SLB10	B	4 3/4"	1 3/8"	1 1/8"	1 1/2"	1/4"
SLB11	B	6"	1 3/8"	1 1/4"	1 1/2"	1/4"
SLB15	B	6"	1 3/8"	11/16"	1 1/2"	1/4"
SLB16	B	6"	1 3/8"	1"	4"	1/4"

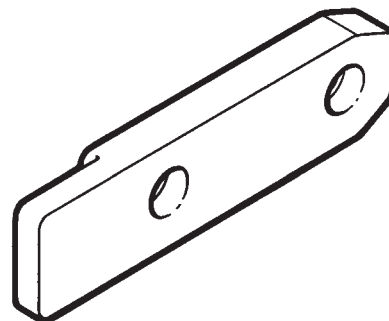
Note: Other sizes available upon request.



Style (A)

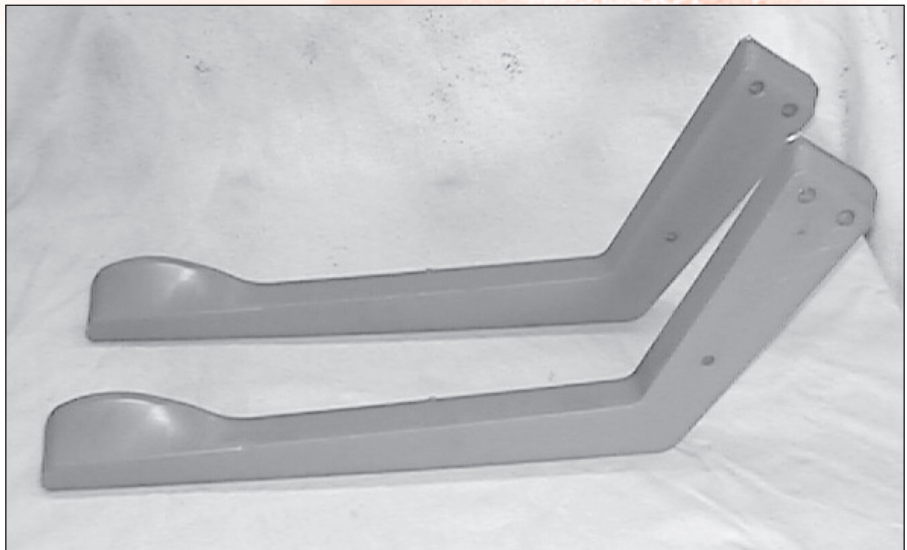


Style (B)



Style (C)

STICKER PLACEMENT ARMS



*Right hand shown above

FEATURES:

- Durable
- Excellent cold and hot weather performance

SIZES:

- Standard right hand and left hand available.

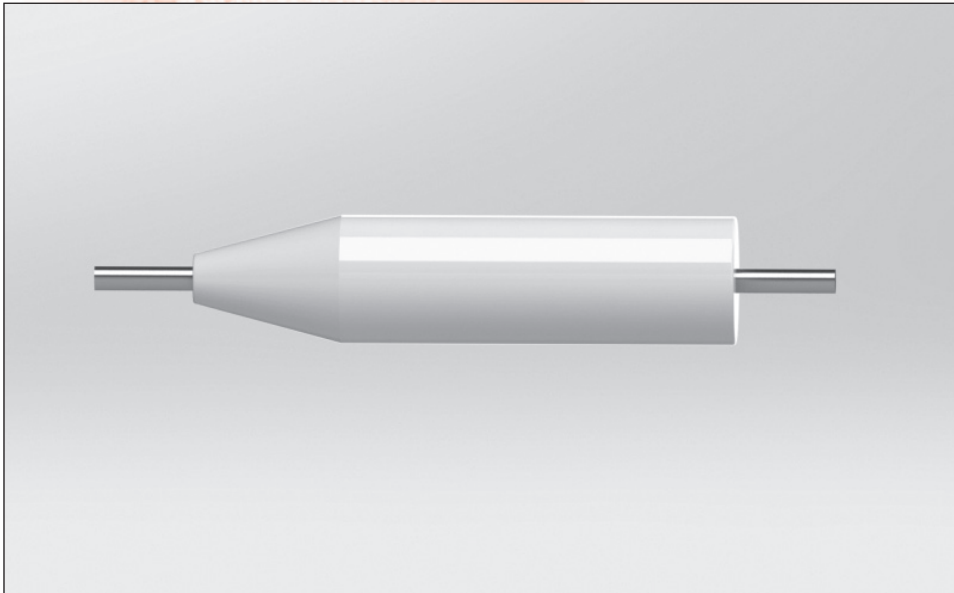
APPLICATIONS:

- OEM replacement parts

MATERIALS:

- Proprietary co-polymer formulation

SWEDE ROLL



FEATURES:

- Positive grip
- Outlasts rubber
- No pitch build up
- Choice of durometer
- Inexpensive to recover

APPLICATIONS:

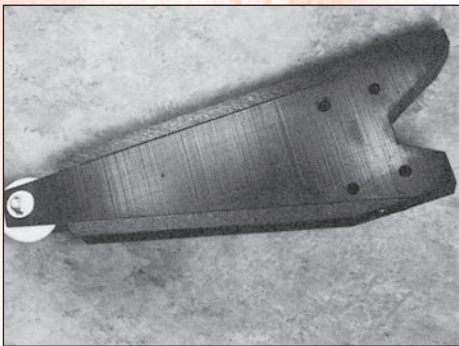
- Green chain
- Trash conveyors
- Slab sorter

MATERIALS:

- Urethane over steel

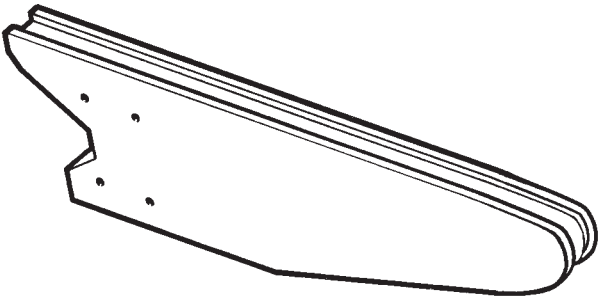
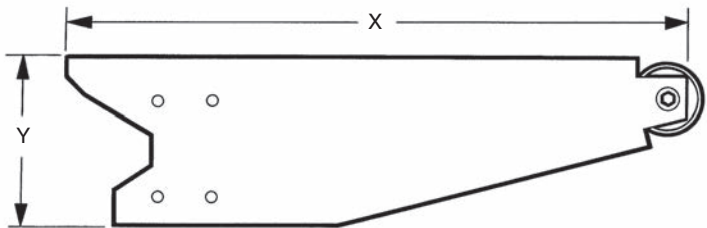
TIPPLE ARM

Tipple arm bodies are constructed of either UHMW or polyurethane, depending on customers preference. They are available with a solid style nose, or with replaceable nylon “live” nose roller. The light weight of UHMW allows the arm to cycle quicker with less inertia.

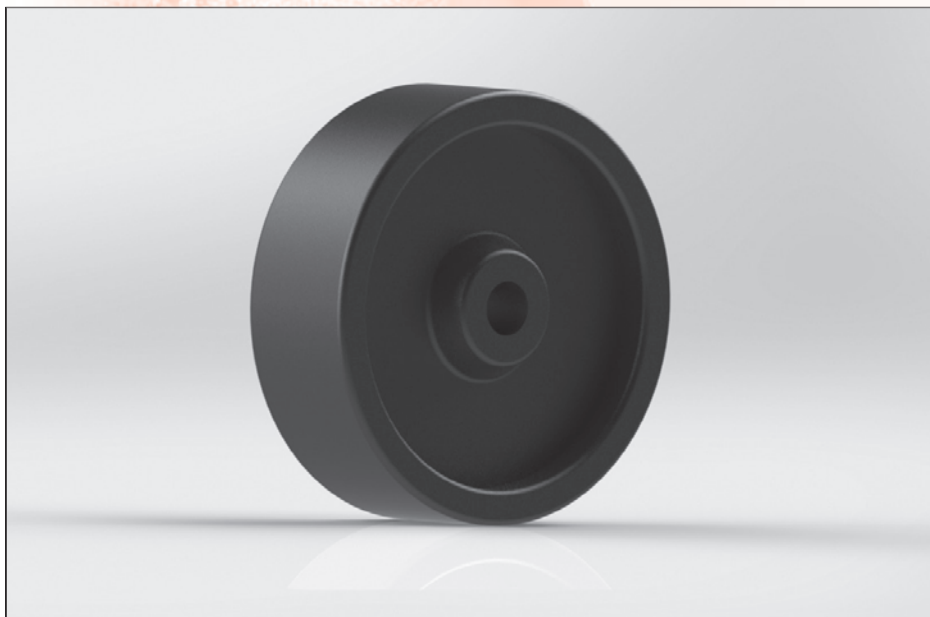


Part No.	X	Thickness	Y
TA 2350	23 1/2"	1 3/4"	7 1/2"
TA 2550	25 1/2"	1 3/4"	7 1/2"
TA 2850	28 1/2"	1 3/4"	7 1/2"
TA 3150	31 1/2"	1 3/4"	7 1/2"

Extension Key
N-with nose roller



VENEER & LUMBER CART WHEELS



FEATURES:

- Solid UHMW injection molded
- Durable
- Self-lubricating
- Light weight
- Inexpensive

APPLICATIONS:

- Green/dry veneer carts
- Other carts

SIZES:

- 12" O.D.
- 1 1/4" bore
- 3" face

PART No.:

- MW12

MATERIALS:

- Black UHMW

PRODUCTS FOR SPECIFIC INDUSTRIES

PANEL OSB & PARTICLE BOARD

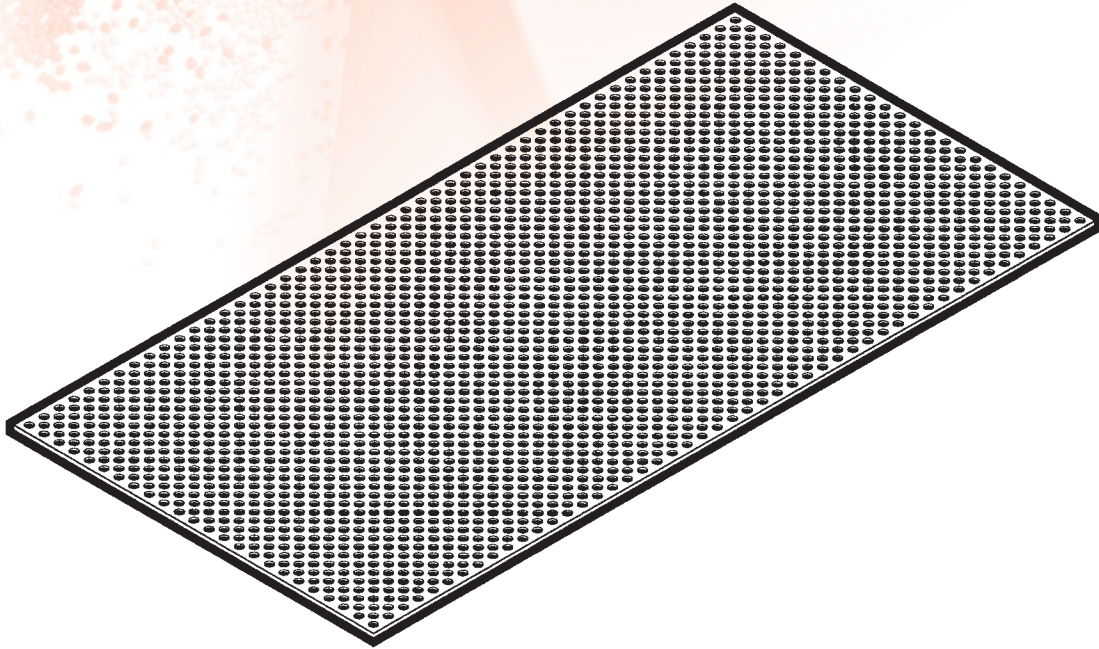
Chain Guide	51-52
Chain Tops	58
Drag Chain Idler Drum	35
Drag Chain Sprocket	34
EA-55 polyurethane	61
Forming Line Perforated Plate	80
Mill Chain Sprocket	33
UHMW Oregon Bends	57
Polyurethane Panel Turner Accessories	81
Hot Press Platen Guides	82
Press Charger Star Gears	83
Steel Capped Split Bearings	9
Suction Rings	84
Urethane Crown Pulley	65
Urethane Rolls	63
Urethane Wheel Recover	64
Veneer and Lumber Cart Wheels	78



**DIVERSIFIED
PLASTICS, INC.**

Engineered plastics designed for the way you do business.

FORMING LINE PERFORATED PLATE



FEATURES:

- Abrasion resistant
- Extends the life of the forming belt
- Lower friction
- Reduces use of power consumption

SIZES:

- Built to customers' specifications

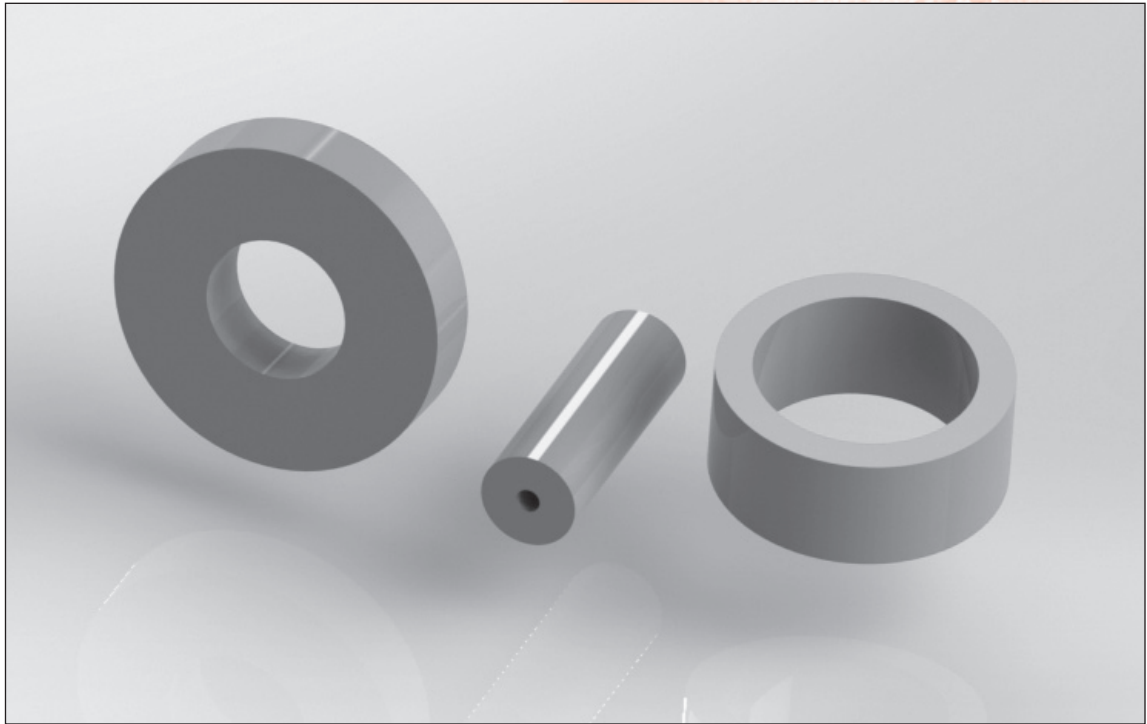
APPLICATIONS:

- Used at the forming heads on the particle board and MDF forming line

MATERIALS:

- Ceramic-filled UHMW
- Phenolic
- Nylon

POLYURETHANE PANEL TURNER ACCESSORIES



FEATURES:

- Gentle on panel
- Prevents shock from being transmitted to the machine structure
- Cuts noise levels significantly
- EA-55 energy absorbing

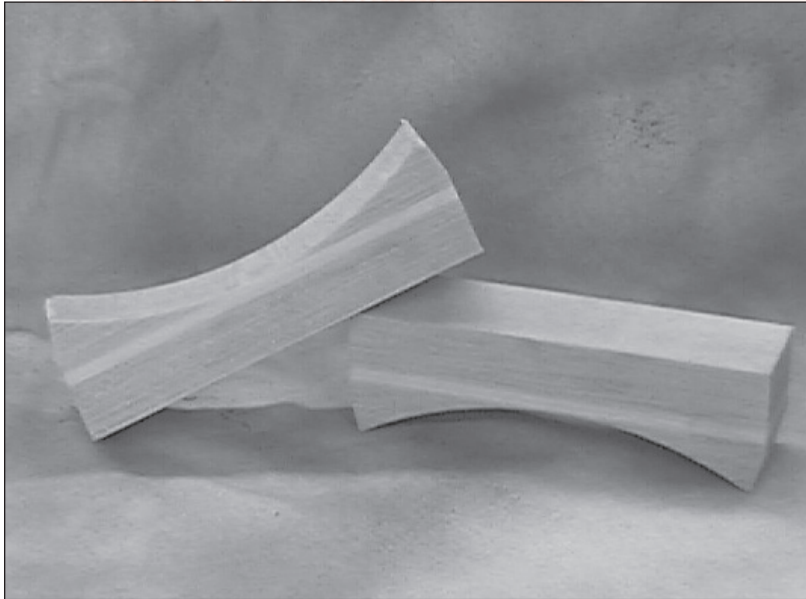
APPLICATIONS:

- Plywood / fiberboard / OSB plants
- Star turner – rollers, arm cushions
- Drop arm turner arm cushions

PRODUCTS:

- Available for many name brand turners
- Can be made for your turner

HOT PRESS PLATEN GUIDES



LOCATION:

- Fiberboard
- Plywood plants that use multi-opening hot press

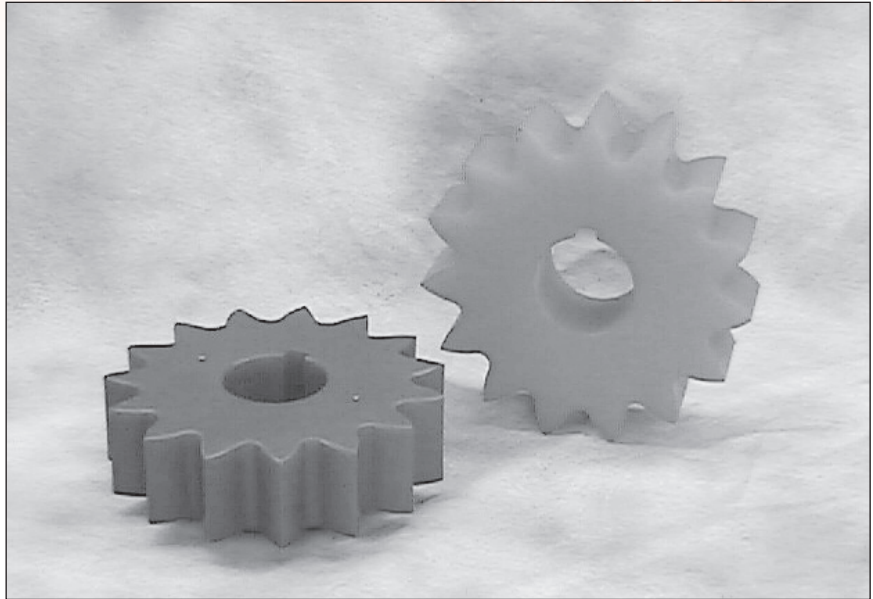
FEATURES:

- Traditional brass guides require lubrication. This lubrication serves as a magnet for surrounding wood fiber, dust, and grit. Our HT-33 guides are self lubricating for providing cleaner smoother operations.

APPLICATIONS:

- Press platen guides (traditionally made of brass) are saddle bearings attached to the four corners of each hot press platen, or plate. These saddles glide on the four corner posts of the hot press to maintain the platens' position in the press.

PRESS CHARGER STAR GEARS



FEATURES:

- Impact resistant
- High wear
- Cost effective
- Quiet
- Corrosion resistant

SIZES:

- 15-tooth

APPLICATIONS:

- Used on multi-opening hot press charger/loader

MATERIALS:

- Urethane
- UHMW
- Nylon

SUCTION RINGS



FEATURES:

- Non-marking
- Durometers ranging from 50A – 90A
- High wear and tear strength characteristics

SIZES:

- 11.5" O.D.
- 13.0" O.D.

APPLICATIONS:

- Suction feeders
- Saws
- Sanders
- Coatings

MATERIALS:

- Urethane
- TPE elastomers

PRODUCTS FOR SPECIFIC INDUSTRIES

PLYWOOD

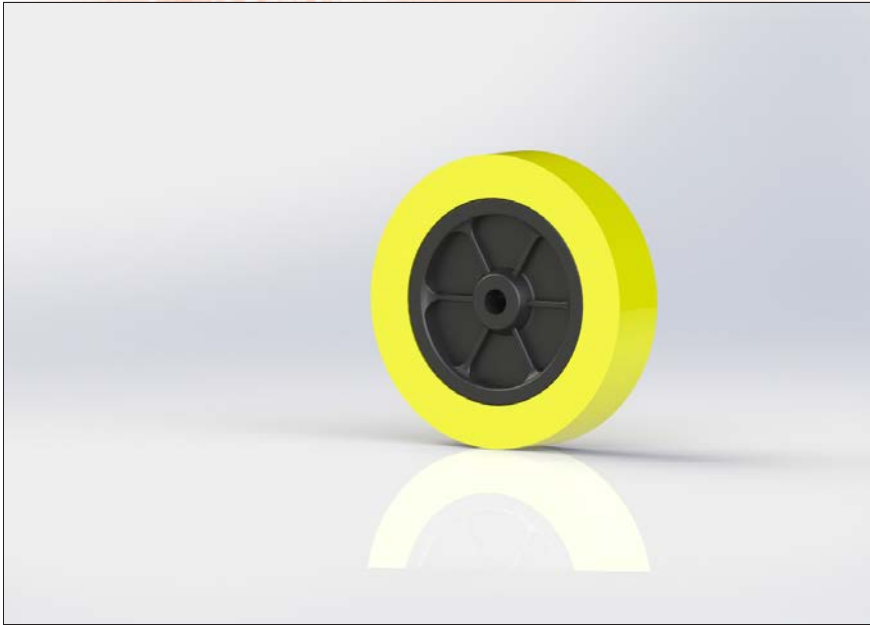
Chain Guide	51-52
Chain Tops	58
Drag Chain Idler Drum	35
Drag Chain Sprockets	34
Dryer Hanger Bearing	12
Dryer Hold Down Wheel	86
EA-55 Polyurethane	61
Hot Press Platen Guides	82
Mill Chain Sprockets	33
Raymond Plugger Gears	87
Rotary Clipper Shear	88
Skinner Deck Hold Down Wheel	89
Steel Capped Split Bearings	9
Suction Rings	84
UHMW Oregon bends	57
Urethane Crown Pulley	65
Urethane Roll	63
Urethane Wheel Recover	64
Veneer and Lumber Cart Wheels	78
Veneer Knockdown Arm	90
Knock Down Arm Cylinder External Cushion	91



**DIVERSIFIED
PLASTICS, INC.**

Engineered plastics designed for the way you do business.

DRYER HOLD DOWN WHEEL



FEATURES:

- Impact resistant
- Light weight
- No lubrication
- Low cost
- Molded thermal plastic body
- 50A durometer O.D.

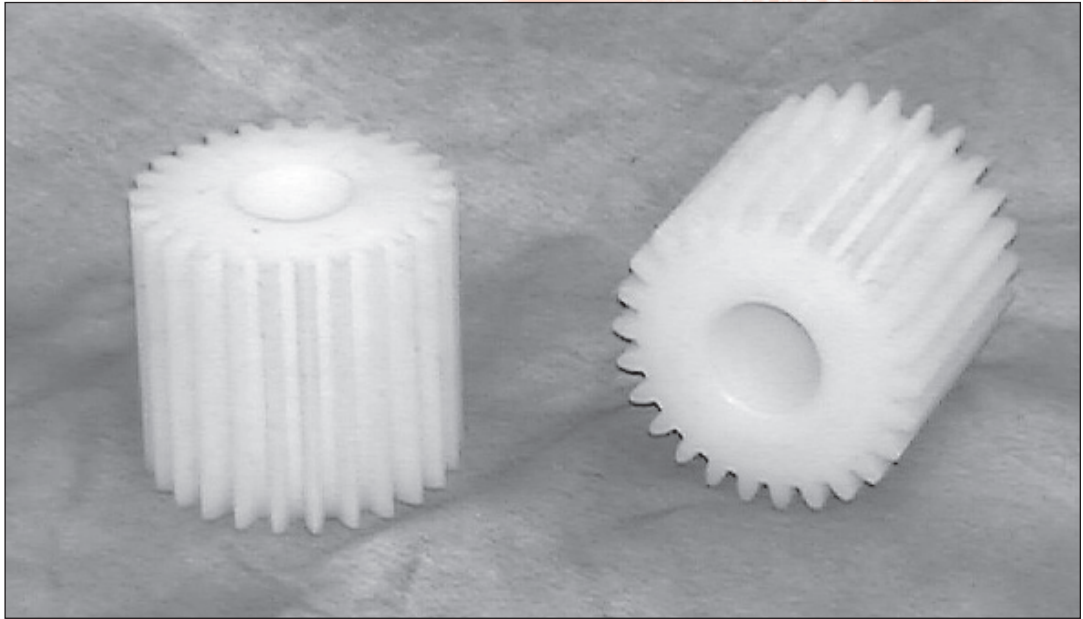
APPLICATIONS:

- COE dryer/infeed
- Other hold down applications

SIZES:

- 8 1/2" O.D.
- 2 5/8" face
- 2 15/16" L.T.B.
- Variable bores

RAYMOND PLUGGER GEARS



FEATURES:

- Absorbs shock for other drive components
- Light weight
- Cost effective
- Quieter running
- Easy to change
- Less lubrication

APPLICATIONS:

- Veneer plugger

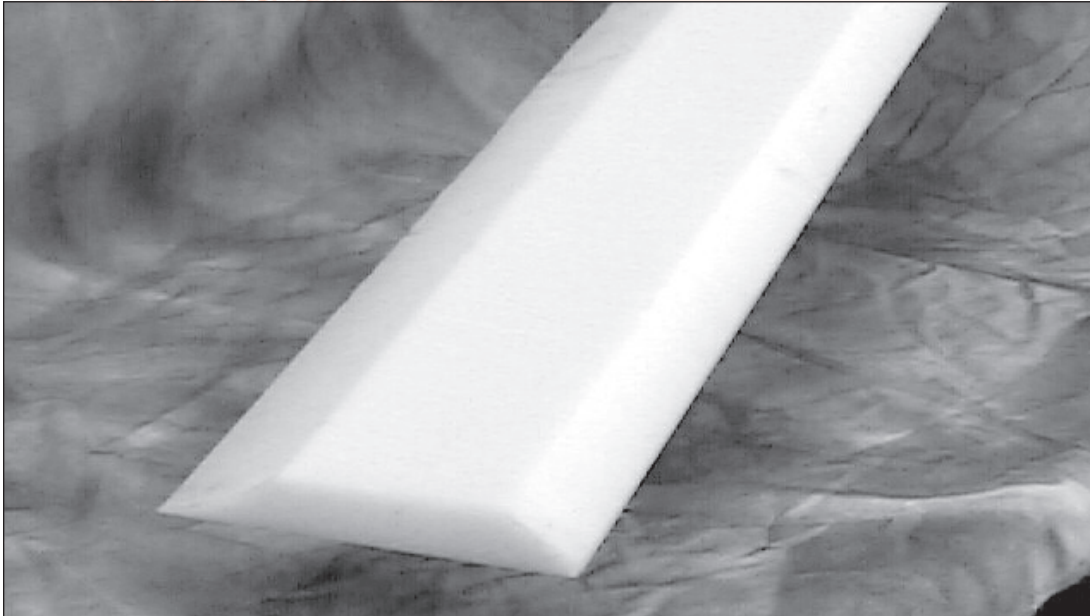
SIZES:

- RP 31TG (31 Teeth)
- RP 26TG (26 Teeth)

MATERIALS:

- High impact nylon

ROTARY CLIPPER SHEAR



FEATURES:

- Light weight
- Less expensive
- Prevents veneer wrap around anvil

APPLICATIONS:

- Plywood / veneer rotary clipper

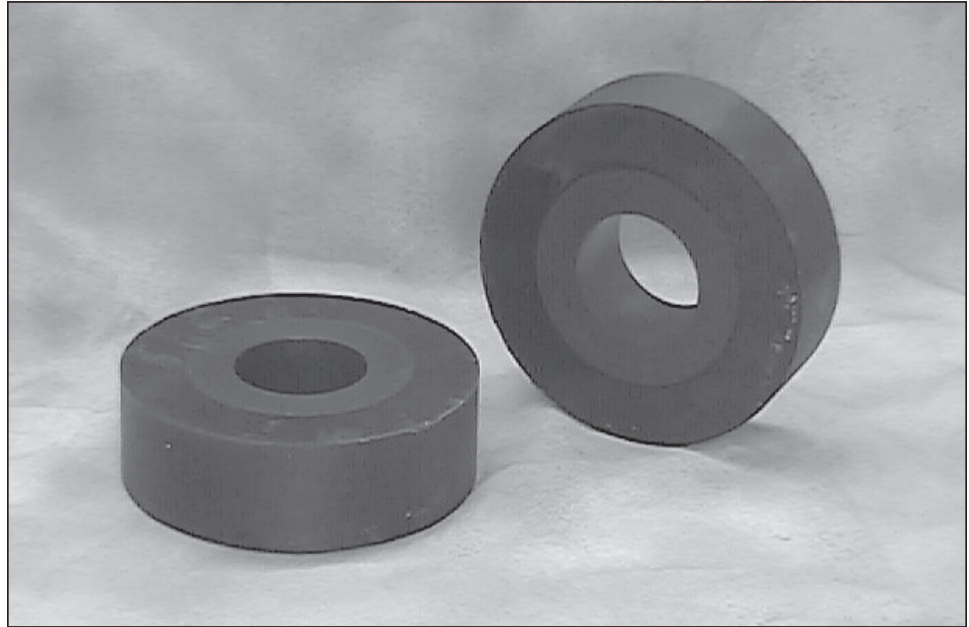
SIZES:

- Provide dimensions for quote

MATERIALS:

- UHMW

SKINNER DECK HOLD DOWN WHEEL



FEATURES:

- No build up
- Longer lasting
- Soft durometer outer tire
- Cost effective method to refurbish wheels
- Available with or without set collar

SIZES:

- Provide dimensions for quote

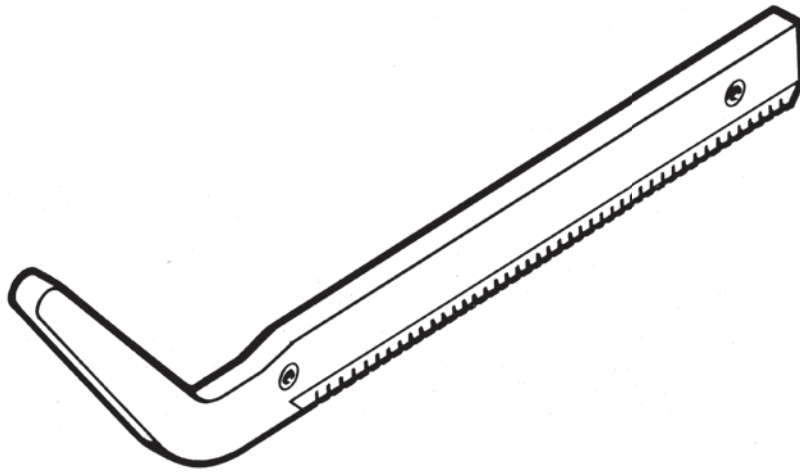
APPLICATIONS:

- Plywood and panel plants
- Hold down drive wheels for skinner saw feed deck

MATERIALS:

- Dual durometer urethane

VENEER KNOCKDOWN ARM



FEATURES:

- “No whip” plastic body
- Replaceable urethane traction surface
- Replaceable bushings
- Cost effective exchange program
- New & reconditioned plywood arms

APPLICATIONS:

- Green stackers
- Dry stackers
- Raute machines

SIZES:

- 54”
- 27”
- Other sizes available upon request

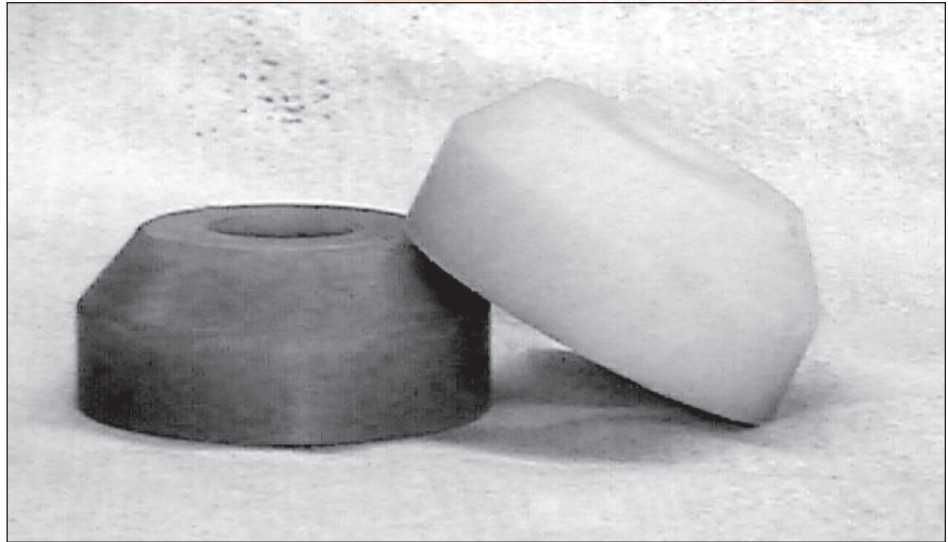
PART No.:

- KDARM 54
- KDARM 27

MATERIALS:

- UHMW/urethane
- Plywood/urethane

KNOCK DOWN ARM CYLINDER EXTERNAL CUSHION



FEATURES:

- Eliminates shock
- Saves cylinder components
- Saves knockdown arms
- Eliminates down time

APPLICATIONS:

- Green & dry veneer stackers

SIZES:

- Fits standard 3/4" rod

MATERIALS:

- Urethane
- EA-55 (energy absorbing urethane)

PRODUCTS FOR SPECIFIC INDUSTRIES

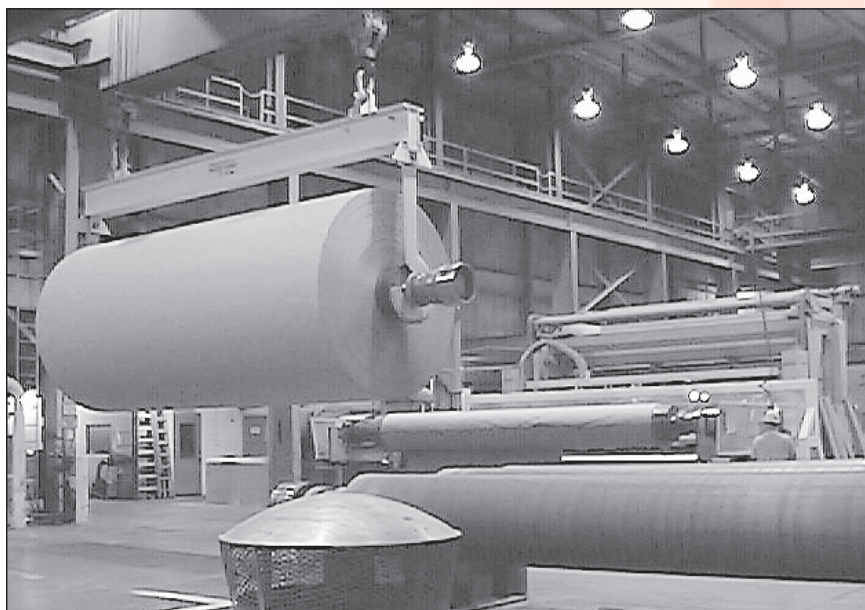
PULP & PAPER

Chain Guide	51-52
Chain Tops	58
Drag Chain Idler Drum	35
Drag Chain Sprocket	34
EA-55 Polyurethane	61
Mill Chain Sprocket	33
Paper Roll Crane Hook Liners	93
Rattle Rolls	48
Red Spool Roll Cushions	94
Roll Handling Stops and Bumpers	95
Scalping Roll Spacers	96
Steel Capped Split Bearings	9
Suction Box Cover	97
Tidland Core Shaft Cradle.....	98
UHMW Oregon Bends.....	57
Urethane Rolls.....	63
Urethane Wheel Recover	64
Venturi Dampers.....	99



Engineered plastics designed for the way you do business.

PAPER ROLL CRANE HOOK LINERS



FEATURES:

- Excellent hook protector
- Protects paper roll bearing journals

APPLICATIONS:

- Paper roll crane hooks

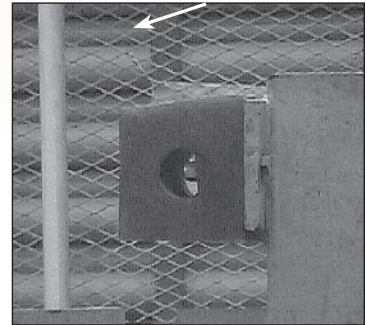
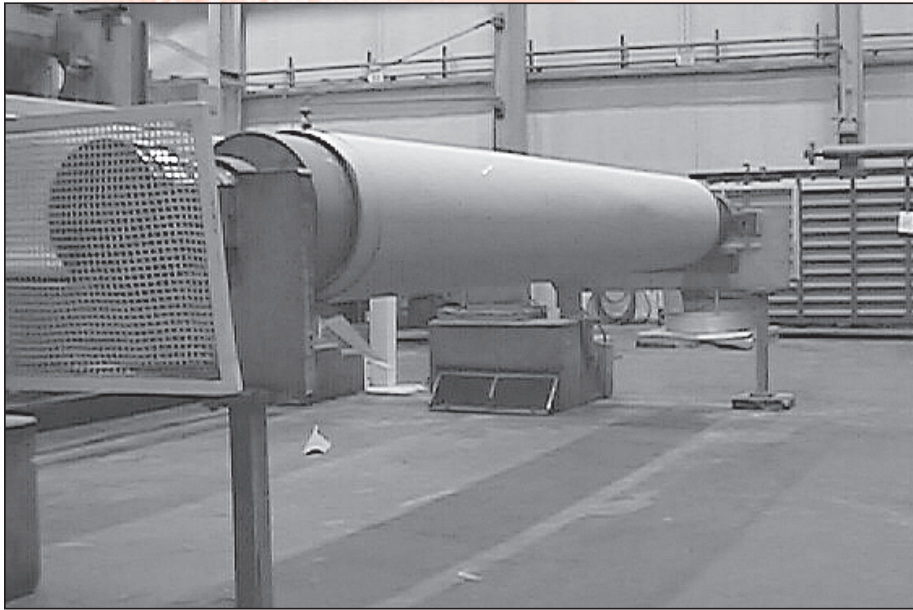
SIZES:

- Provide dimensions for quote

MATERIALS:

- Nylon

REEL SPOOL & ROLL CUSHIONS



FEATURES:

- Eliminates structural damage
- Eliminates reel spool damage
- Sound dampening

SIZES:

- Provide dimensions for quote

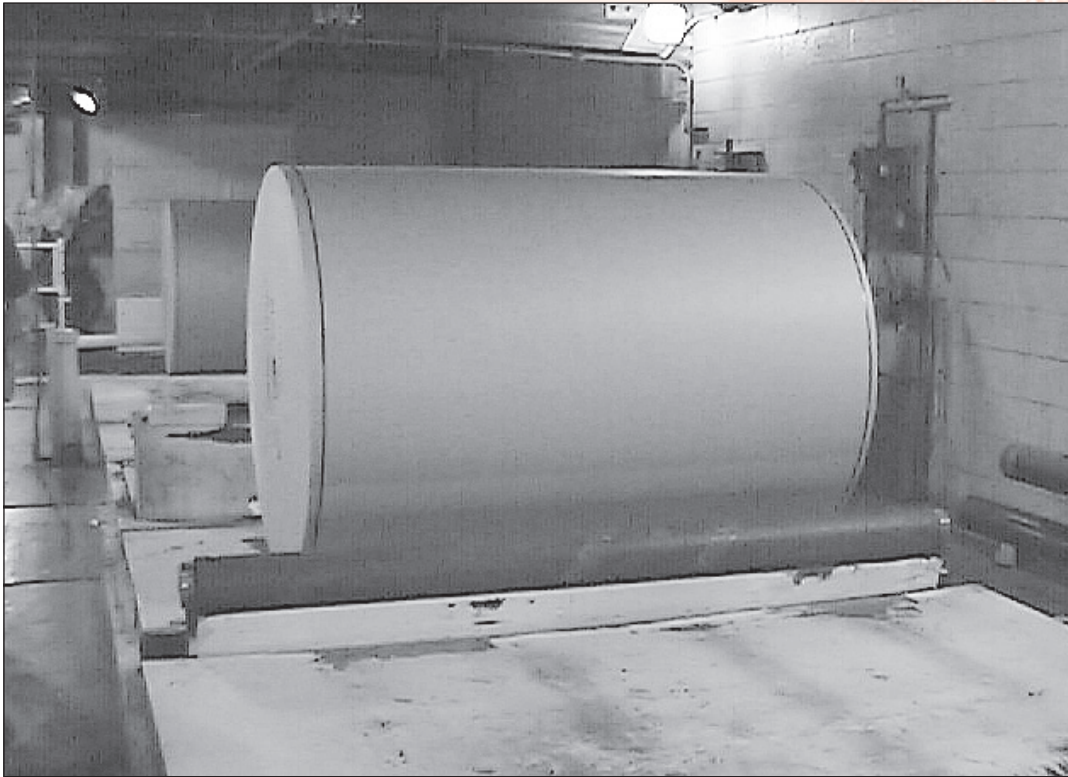
APPLICATIONS:

- Gently cushions and stops the reel spools at the winders and rewinders

MATERIALS:

- Energy absorbing urethane

ROLL HANDLING STOPS & BUMPERS



FEATURES:

- Softens blow to mechanical linkages
- Eliminates paper damage (denting, scrubbing, tearing, etc.)
- Sound dampening

SIZES:

- Provide dimensions for quote

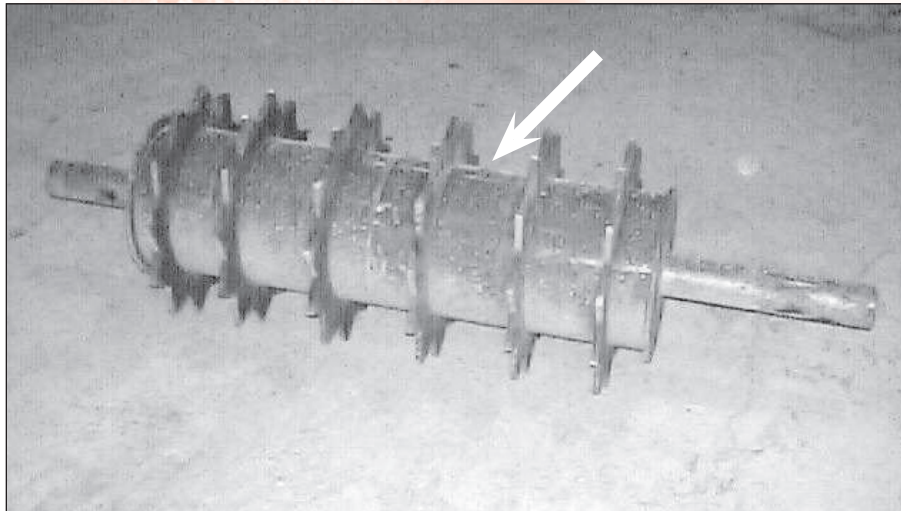
APPLICATIONS:

- Gently stops rolls in areas such as weigh stations, elevators, banders, etc.

MATERIALS:

- Energy absorbing urethane

SCALPING ROLL SPACERS



FEATURES:

- Resilient, allows for difficult product to pass through
- Easy to install and replace
- Wear characteristics are superior to steel

APPLICATIONS:

- Used between the “stars” on a scalping conveyer and live grizzly systems

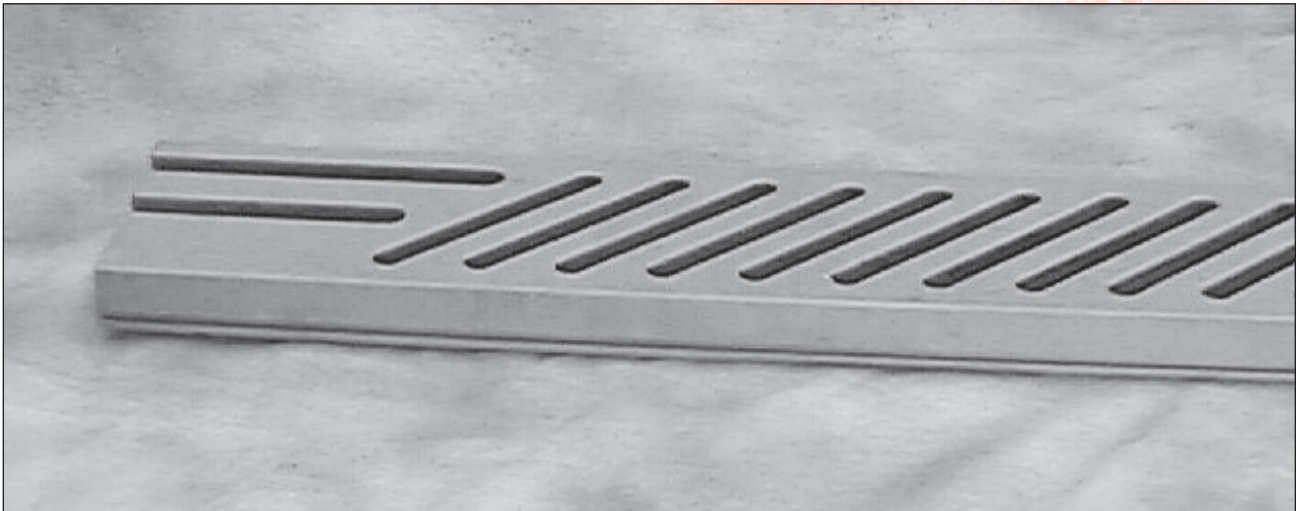
SIZES:

- Provide dimensions for quote

MATERIALS:

- Urethane

SUCTION BOX COVER



FEATURES:

- Gentle on felt/wire
- Simple installation
- Long lasting
- High chemical resistance
- Minimizes wear

SIZES:

- Provide dimensions for quote

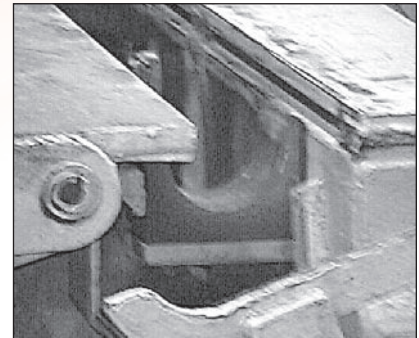
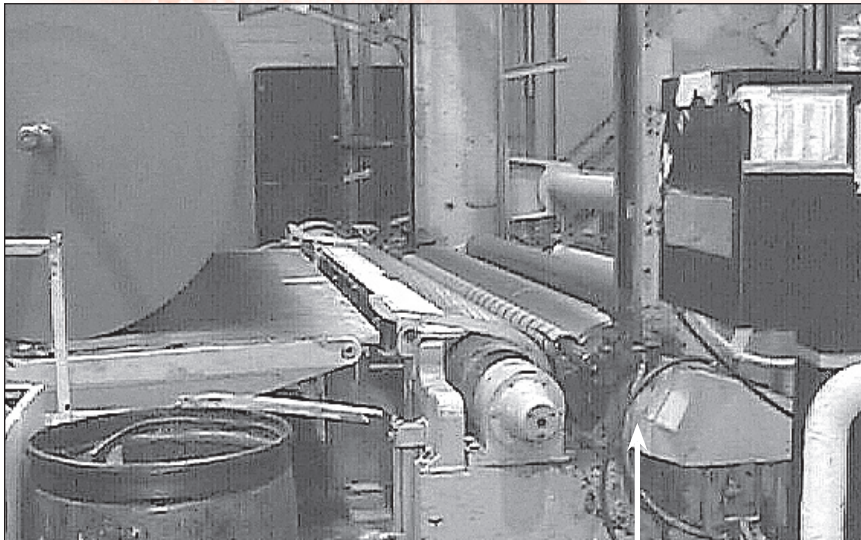
APPLICATIONS:

- Used at wet end of paper machines

MATERIALS:

- Ceramic-filled UHMW
- Natural UHMW
- Black UHMW

TIDLAND CORE SHAFT CRADLE



FEATURES:

- Reduces damage to expensive shaft
- Sound dampening
- Lasts longer than wood

SIZES:

- Provide dimensions for quote

APPLICATIONS:

- Gently cradles the expandable core shafts at the rewind station

MATERIALS:

- Urethane

VENTURI DAMPERS



FEATURES:

- Abrasion resistant
- Corrosion resistant
- Durable

SIZES:

- Provide dimensions for quote

APPLICATIONS:

- Velocity control in the air scrubber

MATERIALS:

- UHMW-PE
- Stainless steel

PRODUCTS FOR SPECIFIC INDUSTRIES

FOOD

AG Chain Sprockets	32
Can Line Pulleys	42
Chain Guide	51-52
Diversaliner	60
Diversa-Track - Curved & Straight Track For Table Top Chain.....	56
Range Bearings - 2 bolt & 4 bolt.....	4
Flat Top Conveyor Sprockets.....	30-31
Metering and Spice Augers.....	46
Mill Chain Sprocket.....	33
Molded Rollers	44
Pillow Block Bearings	2
Rattle Roll.....	48
Roll End Bearings	14-16
Roller Chain Sprockets	20-24
Self Aligning Bearing Inserts.....	5
Self Aligning Bearing Housings 2 bolt & 4 bolt.....	7
Self Aligning Bearing Housings Pillow Block Style	6
Split Pillow and Split Block Bearings.....	8
Spur Gears	37
Suction Rings	84
UHMW Oregon Bend	57
Urethane Crown Pulley	65
Urethane Rolls	63
Urethane Wheel Recover	64



**DIVERSIFIED
PLASTICS, INC.**

Engineered plastics designed for the way you do business.

PRODUCTS FOR SPECIFIC INDUSTRIES

MINING

Diversaliner	60
EA-55 Polyurethane	61
Mill Chain Sprocket	33
Molded Rollers	44
Rattle Rolls	48
Roller Chain Sprockets	20-24
Spur Gears	37
Steel Capped Split Bearings	9
Urethane Crown Pulley	65
Urethane Rolls	63
Urethane Wheel Recover	64



**DIVERSIFIED
PLASTICS, INC.**

Engineered plastics designed for the way you do business.

PRODUCTS FOR SPECIFIC INDUSTRIES

AGRICULTURE

AG Chain Sprockets	32
Chain Guide	51-52
Diversaliner	60
Range Bearings - 2 bolt & 4 bolt.....	4
Flat Top Conveyor Sprockets.....	30-31
Mill Chain Sprocket	33
Molded Rollers	44
Pillow Block Bearings	2
Rattle Roll	48
Roll End Bearings	14-16
Roller Chain Sprockets	20-24
Self Aligning Bearing Housings 2 bolt & 4 bolt.....	7
Self Aligning Bearing Housings Pillow Block Style	6
Self Aligning Bearing Insert	5
Split Pillow and Split Block Bearing.....	8
Spur Gears	37
Steel Capped Split Bearings	9
UHMW Oregon Bend	57
Urethane Crown Pulley	65
Urethane Rolls	63
Urethane Wheel Recover	64



**DIVERSIFIED
PLASTICS, INC.**

Engineered plastics designed for the way you do business.

PRODUCTS FOR SPECIFIC INDUSTRIES

GYPSUM

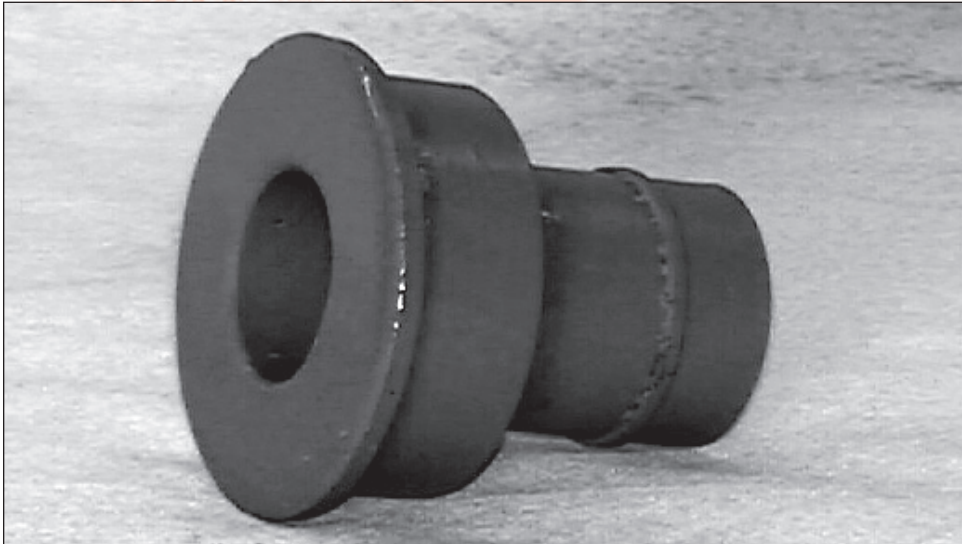
AG Chain Sprockets	32
Chain Guide	51-52
Chain Tops	58
Discharge Port.....	104
Diversa-Track - Curved & Straight Track For Table Top Chain.....	56
Diverseliner	60
Dryer Hanger Bearing	12
Dryer Hold Down Wheel	86
EA-55 Polyurethane	61
Flat Top Conveyor Sprockets.....	30-31
Hard Edge Port	105
Industrial Augers.....	46
Mill Chain Sprocket.....	33
Molded Rollers	44
Pillow Block Bearing	2
Rattle Roll.....	48
Roll End Bearings	14-16
Roller Chain Sprockets	20-24
Self Aligning Bearing Housings Pillow Block Style	6
Self Aligning Bearing Housings 2bolt/4bolt.....	7
Self Aligning Bearing Insert	5
Split Pillow and Split Block Bearing.....	8
Spur Gears	37
Steel Capped Split Bearings	9
Suction Rings	84
Transition Boot	106
UHMW Oregon Bend	57
Urethane Crown Pulley	65
Urethane Rolls	63
Urethane Wheel Recover	64



**DIVERSIFIED
PLASTICS, INC.**

Engineered plastics designed for the way you do business.

DISCHARGE PORT



FEATURES:

- Durable
- Abrasion resistant
- Wear characteristics are superior to steel

APPLICATIONS:

- Gypsum forming line

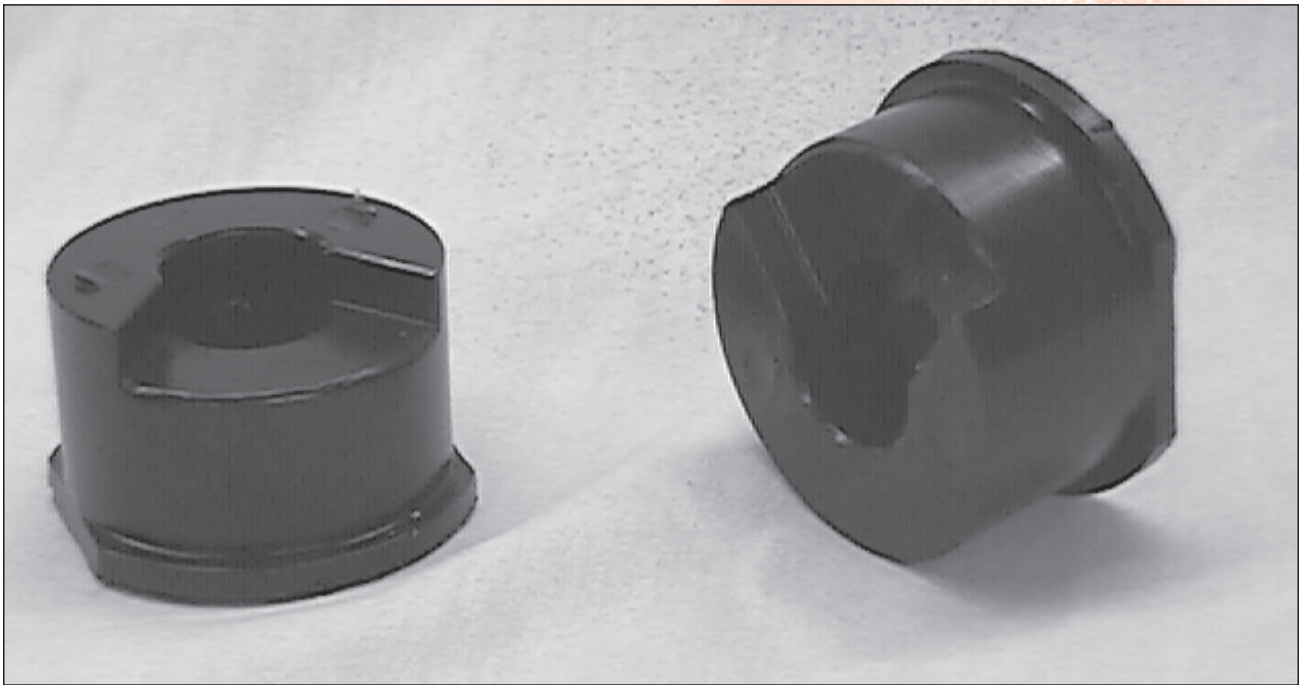
SIZES:

- Provide dimensions for quote

MATERIALS:

- Polyurethane

HARD EDGE PORT



FEATURES:

- Cost efficient
- Wear characteristics are superior to steel

SIZES:

- Provide dimensions for quote

APPLICATIONS:

- Used on hard edge mixers

MATERIALS:

- Polyurethane

TRANSITION BOOT



FEATURES:

- High abrasion resistance
- Cost effective

APPLICATIONS:

- Urethane nozzle used to distribute mud in sheet forming line in Gypsum plant

SIZES:

- Provide dimensions for quote

MATERIALS:

- Polyurethane



We Put Polymers To Work For You.
Get A Quote On Your Project Today!
Call: 800.321.0084 Or Visit
www.dpiplastics.com

3721 Grant Creek Road
Missoula, MT 59808
Toll-Free: 800.321.0084
Fax: 406.728.4074
sales@dpiplastics.com

Manufactured In The USA